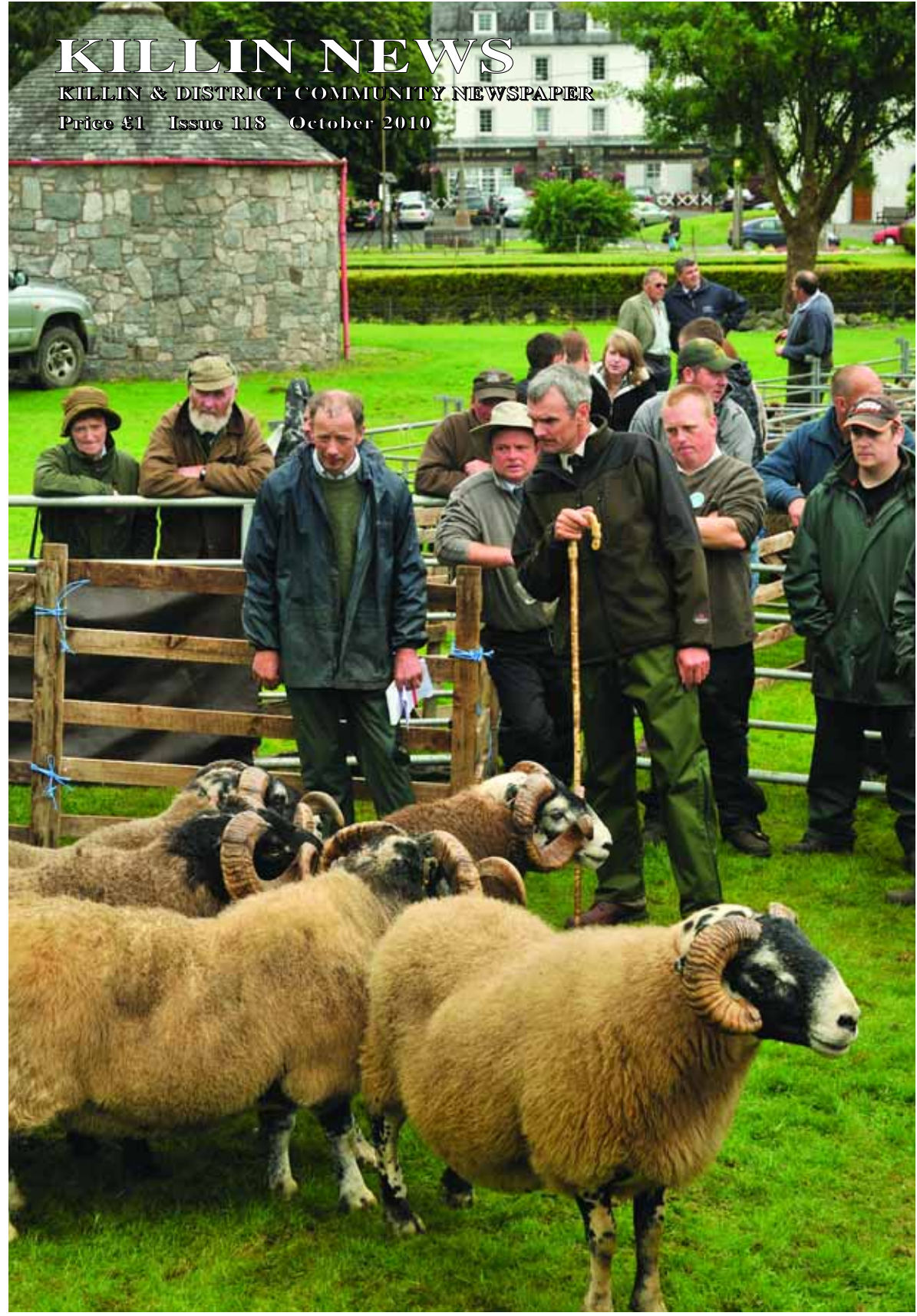


KILLIN NEWS

KILLIN & DISTRICT COMMUNITY NEWSPAPER

Price £1 Issue 118 October 2010





DEADLINES

Issue: 119
Advertising
29 Oct
Copy
5 Nov

Editorial Policy Statement

The Killin News is a free community newspaper produced and distributed every two months by volunteers to households and businesses in Killin and district. The aim of those involved is to produce an informative, accurate and entertaining journal for those who live, work and visit in this area. Letters and articles published in the newspaper do not necessarily reflect the views of the Production Committee and they reserve the right to shorten, edit or not publish any item. Contributions will be attributed to the author. Vested interests will be declared where applicable. Articles should be between 200 and 300 words, photos in high quality and the content should be original work relevant to Killin and environs. All personal emails are acknowledged by a reply. If you do not receive a reply please contact us by phone or drop the article in the office letterbox.

Production Committee

Gina Angus, Willie Angus, Jim Beattie
 Allan Chisholm, Judy Forster
 Dani Grant, Angus Inglis
 Margaret MacIver
 Kay Riddell, Liz Stevens

To advertise in the Killin News

Advertising Rates from £12
Contact Tel: 01567 820298

Adverts are accepted in good faith and we cannot be held responsible for the goods and services advertised

Web sites: www.killin.info and
www.killinnews.co.uk

e-mail: [killin.news\[at\]madasafish.com](mailto:killin.news[at]madasafish.com)
[editorial\[at\]killinnews.co.uk](mailto:editorial[at]killinnews.co.uk)
[adverts\[at\]killinnews.co.uk](mailto:adverts[at]killinnews.co.uk)

Address: Main Street, Killin FK21 8UW
Office Phone : 01567 820014

Front Page: Judging at Killin Show
Photo by David Robertson

Editorial

There's gold in them thar Loos

Inspired by Gerardine Botte of Ohio University, researchers Shanwen Tao and Rong Lang of Heriot Watt and John Irvine of St Andrews are developing fuel cells to obtain electricity directly from urine using only a catalyst. "An adult produces enough urine each year to drive a car 2,700 kilometres."

The aim of some researchers is to achieve energy from mixed domestic waste and turn an expensive waste management process into a productive one.

Already known as an excellent compost accelerator the value of urine has been eschewed for many years. It was not always so. In the early days of explosives urine was a valuable commodity used in the production of saltpetre, potassium nitrate and collected, bought by the bottle, in the streets of London until guano harvesting in the 1840s produced nitrates and phosphates in vast quantities for explosives and fertilisers. Maybe it is time for urine once more to become a useful commodity just when our public loo system seems to be on the retreat. It appears that just when Killin has achieved a turning circle for buses to make public transport in rural areas more attractive, we are about to lose an essential facility for the long distance traveller at the stopping point. Perhaps buses will be required to undergo "comfort stops" at designated hotels, shops and lay bys along the way or enterprising rural businesses will encourage custom, refreshments and shopping along with a valuable addition to their local electricity generation plant in the process. The alternative, as in more primitive communities, is to return to casual wayside fertilisation as and when the urge takes us as may be observed in long lasting motorway traffic jams. Is our society ready for that?

WA



All Types of Electrical Installation
 Intruder & Fire Detection Systems



Pennycross, Manse Rd.
 Killin, Perthshire

Telephone: (01567) 820374

Fax: (01567) 820782

JASMINE BEAUTY
 6 Cross Street
 Callander
 01877 331417

*Aromatherapy, Reflexology,
 Stone Therapy, Facials,
 Indian Head Massage,
 Spray Tan, Waxing,
 Nail Extensions, Manicures,
 Electrolysis, Tanning Booth
 Make-up, Permalase,
 Second treatment room*

Tuesday - Saturday
 GAF Special on Wednesday
GIFT VOUCHERS

MAUREEN H. GAULD
 &
The Killin Gallery
Wide Range of
Antiques,
Fine Art & Curios
on Display

Craiglea, Main Street, Killin
 Tel: (01567) 820 475 - Shop
 820605 - House

Judy's Birthday Fund

While attending the Western General Hospital (WGH) Neuro-Oncology Centre in Edinburgh for radio and chemotherapy following surgery in July for a brain tumour, I have been very impressed with the care I have received and the excellent skill and support from all the staff for me, my family and friends. Since diagnosis I have learnt that WGH urgently needs a Sono Wand Ultra sound machine which can accurately scan and remove far more of the tumour than conventional surgery but purchase and maintenance for five years costs



£250,000. So my birthday party on Saturday 11th September became a fundraising event for this device. It was very wet Killin morning. The gazebos put up the evening before by the Langs and the Aitkens to protect the food and drinks from the sunshine might now be rainshelters. Cousins, friends and family were arriving from all over the country and it was raining. I was sent back to bed as family and helpers prepared for the big event. When I awoke it was still raining but house, garden and summerhouse were ready - unlike me! At one o'clock people started to arrive and go through to the garden as the sun had now come out. Old and new friends from all areas of my life, locals, and friends of the family all joined in. Katie, Anna and Daniel had worked really hard to help get the party ready and I was so proud of them all. My wonderful parents were doing a great job of introducing themselves and chatting to people. The buffet was superb. I provided drinks, burgers and sausages but everything else was brought by guests - even some who were unable to attend. Donations of money also started to arrive. It was such a happy atmosphere - people talking, children playing, everyone mixing. There was a cake to cut and I had to make a speech. I decided to

enlist the children for moral support and as we all stood there together I realised how lucky I was to have such good friends and family. There was then a second cake, made by Louise Morris, of my beloved Mini complete with chocolate Labradors and me wearing my pink boots! By now it was difficult to know whether to laugh or cry. It was a truly memorable day which ended about 6.30 when, on cue, it started to rain again.

There isn't room to mention all the many people who helped but thank you to you all and to those unable to attend, for your support and donations. Since my diagnosis many people have helped me with lifts to the hospital or up the road or work in my garden and house. I feel so fortunate to have your support and to have you all around me. Killin is a really lovely place to live and people have shown themselves to be incredibly kind. So far we have raised over £5,500 and are hoping to reach £6,000 by the time I present the cheque at my next clinical meeting. Thanks to you all. Cheques made payable to ECNO can still be sent to me as I would like to know the total amount we raised here. See page 29 too - thanks girls, you were fantastic.

Judy Holden

judyholden45@yahoo.co.uk

INDEX

Ads Index	39
Ben Lawers	37
Big Plans for Big Shed	17
Judy's Birthday Fund	3
Boost for Charities	4
Breadalbane Tourism	27
Callander Film Society	34
CARS scheme	37
Celebrations	36
Christmas Dance	5
Computer Corner	15
Crossword	38
Editorial	2
Fire & Ice Festival	19
Floral Awards	30
Flu Clinic	19
Frost Report	18
Herb Society	27
Hogmanay Firework Fund	5
KAT	35
Killin Agricultural Show	6
Killin Angling Club	33
Killin Community Council	4
Killin Heritage Programme	35
Killin Highland Games	20
Killin Primary School	23
Killin Produce Show Results	29
Killin Toddlers Group	19
Killin Youth Group	26
Letters	33
Local Planning	34
McLaren High School	22
Mervyn's Weather	16
Millennium Legacies	5
Mobile Library	28
Nifty Fifty Cycling Team	29
Obituary	33
Public Toilets	32
Soup Sandwich Lunch	26
Strathfillan by the Way	8
Sunflower Competition	22
Think About It	28
Tin Tabernacle	28
Voter Registration	26
What's On	39
Where Are They Now?	32
Which Bin	39

Scottish National Party
Meet the local SNP
Wednesday 6th October
Killin Hotel 8.00pm.

Main speaker
Provost Fergus Wood
All welcome

Shutters Restaurant and Coffee Shop



Coffees & Homebaking
Homemade Soup
Snack Lunches
Main Meals

Tel: 01567 820314

Killin Community Council September Meeting

Public toilets: Local loos are to close and self-funding toilets are not an option as they are too expensive. The Station Yard toilets had a usage of 7,189 in 2008 before the City Link buses started to use the turning circle and those at the Dochart Bridge 25,458. Could any business in Killin provide this sort of service? Stirling Council would pay a fee of between £500- £2000 - possibly not enough to cover the water rates. The Community Council voted to keep the toilets but if there is no solution they will probably close for good.

Killin Skip: This will not re-open due to lack of funds from Stirling Council. SEPA had nothing to do with this decision and the licence is still in force.

Road Maintenance: The Ardeonaig Road is under maintenance.

The Old Mart: Stirling Council and Mr. Craig have come to an agreement so maybe things will progress.

Playpark: Levels for new drains in the park are in development and the Playpark is on hold until the drainage has been fixed.

Turning Area: Speed bumps are still missing and the grassy area still requires attention

Cemetery: A letter has been sent to Bob Jack, Chief Executive, in the hope of getting some maintenance.

Folklore Centre: KAT has made some proposals suggesting the top floor becomes the Killin News and KAT offices, the middle floor is used by the Heritage Society and the Ground Floor for a thrift shop and tourist information. A separate suggestion was for public toilets there and charging a nominal fee plus comfort partner fee of £500 - £2000

Tyndrum Goldmine: Discussions are ongoing

Youth Project: A meeting on 13th September went very well with great support.

CCTV: Investigations will be made to find out whether the village thinks it would be a good idea to have CCTV at each end of the village.

Correspondence:

City Link buses and delivery vans are driving too fast through the village:

A. Fleming to address this.

Cyclists should abide by the same Highway Code as cars including when taking part in a race.

Both bridges are to be repaired - probably next year as the weather has already turned this year.

National Park Conservation still has some money in the pot for village enhancement .

Next meeting: Killin Primary School 7.30pm Tuesday 9th November.

Boost for Charities



Sarah Heward presenting a cheque for £2,487 to the Parish Church, the Falls of Dochart Retirement Home and the Killin Mountain Rescue Team following her fund raising Ironman event in Lanzarote.



Use your Local Post Office

Post Cards - Greetings Cards

Stamps - Books - Stationery

Batteries - Films

Banking Services

Paul and Dee Melia

Tel: 01567 820201



KILLIN HOTEL

Cosy Bar and Friendly Restaurant
serving delicious meals all day 12 - 9.30pm
in a relaxed hospitable atmosphere
Vistors, locals and children all welcome

30 cosy, well appointed rooms

Free WiFi for guests and customers

Beautiful riverside location

Large function room available for weddings, birthdays, fundraising events or conferences. Call 01567 820 296 for information

mail@killin-hotel.com www.killin-hotel.com



Millennium Legacies

Just over 10 years ago the world celebrated a new Millennium with parties and projects organised to mark the event. In Killin we have lasting reminders of this in the Cairn by the Bowling Green containing a Time Capsule, the Millennium Video and the Millennium Clock in the McLaren Hall. A different reminder is the Hogmanay Firework Display at the Dochart Bridge which by popular demand has been repeated every Hogmanay since 1999. Two of these legacies are now in need of further village attention.

KILLIN HOGMANAY FIREWORK FUND

has produced
a 2011 calendar
to raise funds
for this valuable
village attraction

Calendars available from
The Studio, Killin
All profits to the fund

The Millennium Clock, as pointed out in the Letters column in our last issue, is no longer working.

Apparently this is an electric clock and needs to be restarted if the Hall electricity is turned off at any time or if the clock plug gets disconnected. Colin and Jill Higgins, who lived opposite the McLaren Hall, always noticed when the clock was wrong so Colin was given a key to go in and correct it when necessary, which he did for many years. Unfortunately since the Higgins left the village, no-one has taken this on and the incorrect time showing on our village clock gives an impression that Killin no longer cares what time it is. Perhaps someone else would like to volunteer for the task?

The Hogmanay Fireworks' problem is their cost and the need for volunteers to set up and clear up. The first few years were paid for by public money from various sources and collections in shops and at the Bridge on the night. Latterly Charlie Grant has taken over the organisation and fund raising. This year a Killin calendar has been produced and a raffle of a family of knitted toys is being held in News First. A Christmas Dance has also been organised and there will be the usual collections in the shops and on

the night. The fireworks are very popular not only with villagers but with visitors and, if they are to continue, village support is needed both to raise the £2,000 required and to help on the night. Anyone willing to help in anyway please contact Charlie 07768 333792.

MM

Christmas Dinner Dance

Killin Hotel
7.30pm
Saturday
18th December

Tickets £25
Available now from
Charlie Grant or David Noble
07768 333792 820 858

Proceeds to
Hogmanay Firework Fund

This spectacular sixteenth century castle, restored by the Menzies Clan Society welcomes visitors. Seat of the Chiefs of the Clan Menzies for over 400 years and importantly situated, it was involved in the turbulent history of the Highlands. Architecturally fascinating, it is a splendid example of the transition between earlier rugged fortress and later mansion house. Castle Menzies stands north of the River Tay at Weem on the B846, one and half miles from Aberfeldy.

The castle is available for weddings, functions and corporate events. Also ghost hunts and historic tours.

Open from Easter to mid October
10.30am - 5pm (Sundays 2-5pm)

Admission charge: Adults £6, Concessions £5 & Kids £2.50.
Family rate available

All proceeds exclusively used for the continued restoration
and maintenance under a Charitable Trust.



Period Costumes
available for photography

Gary Knight's haunted castle tours 0784 009 4667 suitable for
children, Wednesday and Saturday nights.

Castle ghost hunt every night 10.30 - 12.30 for over 15s only,
minimum 4 people, £10 pp contact

John Jack 01887 820982

john.jack59@yahoo.co.uk

Castle Menzies

Killin Agricultural



David Robertson



David Robertson



David Robertson



David Robertson



David Robertson



Ron Almer



Killin Outboard Motor Services

Annual Servicing
Winter Servicing
Repairs - Maintenance
Outboard & Inboard
Engines
Petrol or Diesel

25 years trade experience
Mobile service available

Norman Brett

01567 829464

mob 07810 698974

sailthomasina@msn.com



ALLY BAIRD LTD.

Building and Roofing Services

**ROOFING • EXTENSIONS
MAINTENANCE • RENOVATIONS**

No job too small, free estimates and all work is fully guaranteed

M 07833 312346 **T** 01877 330389

E ally.baird@btinternet.com **W** www.allybaird.co.uk

Registered Office: 25 Lagrannoch Crescent, Callander FK17 8DS, Scotland



Show 21st August





Goldmine Debate

Issues arising from a meeting between Fiona

Logan and John Riley at NPA Office Callander on Friday 3rd September 2010 and discussed at the Strathfillan Community Council meeting on 13th September

Tourism statistics

The community believes that the goldmine will boost the local economy counteracting the considerably reduced trading levels, particularly in the tourist industry. Fiona admitted that business was affected by the global recession but stressed that there was contrary evidence; some businesses reporting encouraging trends.

Number and opinions of walkers and climbers on Ben Lui

Fiona insisted that her estimate of 15,000 to 20,000 people per year walking to Ben Lui was correct. We strongly refute this and believe that the number is considerably less than 5000. Some days there are as many as 50 people but there are many days, particularly in bad weather, when there are no visitors.

The size and shape of the tailings dam

From the perspective of the NPA this is the most contentious issue. They claim that this would permanently disfigure the most beautiful scenery in the whole national park.

Consideration of the size, shape and design of the tailings dam(s) is ongoing.

Concern for the environment

We also wish to protect the wonderful scenery in Ben Lui but our young people need employment and career opportunities and our local businesses need to thrive. There have to be acceptable compromises which will enable this goldmine to proceed and the NP planners should now work in partnership with Scotgold to ensure that the mine goes ahead. Fiona Logan and Gordon Watson are happy to discuss the way ahead with Scotgold

Public Meeting

Fiona and Gordon have agreed to attend a public meeting in Crianlarich village hall to explain the NPA perspective and discuss the way ahead with the community. The CC would like this meeting to take place after discussions have taken place between the NP Planners and Scotgold.

Issue of National Strategic Importance

In their recommended refusal of the

planning application, the planners stressed that this project was not of strategic national importance. Our contrary view was that:

- Approximately £50 million to the national economy is significant and could to a large extent fund the operation of this national park.
- A plc could be floated on the stock market to raise £millions and create a state of the art mining heritage exhibition and trail emulating that in Ballarat in Australia, which would be a national iconic tourist attraction.

John Riley

Report from Scotgold

Mr Shane Sadleir, a non-executive director of Scotgold Resources, attended the Community meeting on 14 September. He said he was pleased to report that preliminary informal discussions that day between himself and John Bentley (Chairman of Scotgold) and Fiona Logan and Gordon Watson of the Loch Lomond and The Trossachs National Park had proven very positive. He said he was encouraged by willingness of the Park to work with Scotgold in progressing the Planning Approval. Mr Sadleir said that the report from the Park had highlighted the visual impact of the Tailings Management Facility as the main issue needing resolution before the proposal could proceed. Scotgold are currently investigating various ways to reduce the visual impact to a more acceptable level. He said that at this stage it was still unclear as to how Scotgold could re-enter the planning process and was awaiting further advice on the matter.

Shane Sadleir

Rural Stirling Housing Association

is currently building seven new properties at Mansefield Tyndrum, which are due to be completed by December. The development is made up of

- 1 x 4apt 5 person detached house (2 double and 1 single bedrooms)
- 2 x 4apt 5 person semi detached houses (2 double and 1 single bedrooms)
- 4 x 3apt 3 person flats (1 double and 1 single)

We intend to operate a Local Lettings Initiative which aims to give people in housing need who live in or have a need to live in the local area a greater degree of priority than would apply if we were to operate our Allocations Policy in the normal way.

The houses will be allocated through the housing and transfer list and the prioritisation scheme will operate as follows:

Priority 1

Priority will be given in the first instance to those in housing need who either:

1. live within the Strathfillan Community Council area or in Bridge of Orchy and surrounding settlements
2. can demonstrate a need to live there to give or receive support to a relative or friend or for employment reasons
3. wish to move into the area and who fall into any of the other needs categories specified by the law. However people will only be put in this group if they have been awarded at least 15 housing need points under the Association's Allocations Policy.

The Lettings Plan

The following Lettings Plan for the 7 properties at Tyndrum has been agreed in order to meet needs and demand from each of these groups of applicants that Rural Stirling

THE FABRIC STUDIO

Specialists in Design & Make Up of Curtains
Blinds, Upholstery & all Soft Furnishings
Huge Range of Modern & Traditional Fabrics
Complete Curtain Service, including Free Measuring & Quotes
Fabrics Brought to Your Home
Friendly Staff, delighted to help & advise

Drummond St, Comrie 01764 670921
Mon, Tue, Thur, Fri 9.30 - 5.00 Sat By Appointment
Mobile No : 07792 - 169253

Fillan by the Way

Housing Association must consider:

1. Nominations

In accordance with our Nomination Agreement two of the properties will be allocated to people who Stirling Council nominates.

2. Housing List Applicants

Three of the properties will be allocated to applicants on the Association's housing list.

3. Internal Transfers

Two of the properties will be allocated to an existing tenant who has housing needs that can be met by moving to another house.

Next steps

All applications for Tyndrum have been assessed for the Priority Groups on the basis of information provided in application forms and in a detailed questionnaire that was sent to all applicants during August. We will write to all these applicants and tell them what priority group they have been placed in. Applicants with the highest priority will be visited at home to discuss and verify their housing circumstances. As a result applicants may gain or lose points at this stage because important details about people's housing needs sometimes do not become clear until they are visited.

The numbers on the list change on a

regular basis as new applications are received and existing ones are withdrawn.

For all these reasons it is not possible for us to predict with certainty what the exact outcome of this initiative will be. We aim to make offers for these properties by the end of October at the latest

Contact:

Christine Drew

Housing Officer

01786 841101



Strathfillan Community Development Trust

Crianlarich into Action (CiA)

The working group comprising members of the Trust and the Community Council is delighted to report that full funding for the project specification phase of the Crianlarich Heritage Project has now been secured. After initial success in securing funding from Forth Valley Leader, match funding applications to both the National Lottery and Awards for All were turned down, partly because of the huge volume of applications. (A sign of things to come perhaps?) It was Stirling Council who finally came to the rescue with an offer of match

funding of £5,000 and an appeal to the directors of the Strathfillan Community Development Trust secured the final £1,250 needed. The CiA group is very grateful for this support and looks forward to getting on with the project at last.

Internet/Learning Café In Tyndrum Village Hall

If you want to improve your chances in an increasingly difficult jobs market, a good place to start is by updating and refreshing your CV - the first contact with a future employer. Help is at hand at the Learning Café to get your CV noticed!

Don't forget that the Learning Café runs every Tuesday and Friday from 11am to 4pm and the PAL after school club is on Tuesdays from 4pm during term time. Our tutor, Heather Hamilton is on hand to help you with your IT problems and give one-to-one tuition. Heather is very nice, so don't be shy!

The hall is available (at very reasonable rates!) for private hire for that special event. It's ideal for kid's (messy!) birthday parties.

Are You Interested In Tracing Your Family Tree?

The steering group for the Learning Café would like to find out if there is local interest in genealogy. >

See Our Range @ www.BARHAUL.com

Your Local Builders Merchant

• Bricks	• Cement	• Drainage	• Bulk Bags
• Blocks	• Limes	• Guttering	• 25kg Bags
• Slates	• Gravel	• Geyser Tanks	• Bags
• Linings	• Sand	• Pipes	• Oil Tanks
• Kerbs	• Sub Base	• Tarmac	• Akathene

We hold an extensive range of stock in our yard, and offer a first class delivery service throughout Highland Perthshire.

Self Drive Car & Van Hire

Plant & Tool Hire

Tradesman or DIY'er we have the right tools for your job.

Compacting, Paving, Breakers, 12 & 17hp Cherry Pickers, Laser Level, Floor Sander and Much More.

Fully Insured

**** Competitive Scaffolding Service ****

'Autumn lawn treatment available now'

Barhaul, Langley Centre, Dundee Rd, Aberfeldy. Tel: 01887 820 022 Email: enq@barhaul.com

Beautiful dentistry, delivered by caring hands, focused on ensuring your comfort and developing a trusting relationship in the provision of your dental health.

Speak, smile and eat in comfort and with confidence.

- General dental health care
- Cosmetic smile design
- Dental implant referral clinic
- Emergency access

34 Comrie Street,
Crieff, Perthshire
PH7 4AX

t 01764 652607

www.care-dental.co.uk

**Queen's Awards
WINNERS**

<Accessing some sites can be expensive but if there is interest out there, the Learning Café could supply the software and make finding those infamous ancestors cheaper and easier!! Please get in touch if you are interested.

Anyone For Bee-Keeping?

I'm sure many of you are aware of the problem of the diminishing numbers in the bee population. The National Park Rangers are keen to support a project in Strathfillan to train locals in the art of bee-keeping. Local volunteers will be mentored and trained by members of the Helensburgh Bee Keeping Society and at the end of the training period will be given hives and swarms to care for - not to mention delicious honey to eat! If you are interested in taking part in the bee project, please get in touch with me at the office in the first instance.

Call For Local Artists

The Trust hopes to run another Art Exhibition in November in Tyndrum Village Hall. If you would like to exhibit please call Joyce a.s.a.p to discuss.

Joyce Russell

Development Officer

01838 400 545

strathfillancdt@btconnect.com

Telephone: (01567) 820342

CHARLES GRANT

Painters and Decorators

Beechcroft, Main Street
Killin, Perthshire FK21 8UT

Tiling, Artexing, Graining,
Ragrolling, Sponging, Stripping,
Paper Hanging, Cornicing,
Fire Proofing,
Carpet and Upholstery
Cleaning Services

Disco Hire

Do you need a Disco or music for a Party?

- Smartly dressed Dj's
- Customised music
- High tec Equipment
- LED Light show
- Music for all ages
- Theme parties a speciality
- Competitive pricing

email: mail@highlanddjs.com

website: www.highlanddjs.com

Call 07785 704864



There was a lesson at Crianlarich Primary School just before the summer holidays to get the children interested in saving energy. All the children drew pictures to represent this and six were chosen to be included on a banner for "Strathfillan Goes Green"

We launched the banner on 28th August at the Family Fun Day. We also started our lending library for energy monitors. Moira Robertson has 20 monitors to lend out so that you can see how much electricity you are using - all we ask is that you keep a record of your daily

usage and any changes that you make in order to try to reduce your consumption. The monitors are on loan for 3 or 4 weeks. Moira can help you to set them up and will collect them at the end. Call Moira if you are interested.

We would also like to know if anyone is interested in attending a workshop on "Hard to Treat Homes" and "Renewables". If there is enough interest we would hope to hold it in Strathfillan sometime in October - so if you are interested please contact:

Moira Robertson

Tel: 01838 300296

Crianlarich Primary School

It has been a very hectic start to the term and there are lots of exciting activities coming up. Welcome to all the new Primary One pupils and welcome back to the pupils in Primary Two to Seven. Mrs Sharron Hunter has joined us as our new Principal Teacher. Sharron has already settled in very well to school life and is enjoying her new role.

Mary McLeod

I am delighted to announce that Mary, our school cleaner, was invited to a Royal Garden Party during July in recognition of her long service to the school. She had a wonderful day and I'm sure we all want to thank her for the commitment and hard work that she has shown to the school over many years.

Meet the Teacher

There was an informal meeting for parents to come along and meet their child's teacher on Monday 30th August between 3.00 - 3.30pm.

Information about class routines and homework was given out.

Eco Schools

We are collating evidence and monitoring our school environment so we can then apply for the Green Flag assessment. As part of this, we have arranged for a recycling container to be placed in the playground to enable old clothes and shoes to be collected and the school will earn £500 per ton of textiles. The community will be welcome to use it as the more clothes we collect, the more money we will raise for school funds.

Class 2 have recently got a new teacher called Mrs Hunter. There are 12 children in our class and the 3 new primary 5 children have settled in well.

Our favourite work so far has been on volcanoes. We are making papier mache and mod rock models. Then we are going to have a scientific experiment to make it erupt like a real volcano.

As part of our Scotland topic work, we have recently finished researching a Scottish person and made it into a talk. Some people used power points and others used posters and pictures. We enjoyed listening to everyone and we assessed each others performance. They were fantastic!

We are interested to learn about Scotland and anyone who would like to come in to visit if they have any special knowledge or if someone has returned to Scotland after living abroad we would be interested to hear about it.

Class 2

Chartered Physiotherapist

Doreen MacKinnon-Taylor
M.C.S.P., H.T.

Manipulation ---- Massage

General Physiotherapy

Daytime or Evening Appointments

St. Blanes,
Locheamhead,
Perthshire.
FK19 8NS

Tel: 01567-830-205

E-Mail: doreen.physio@btinternet.com



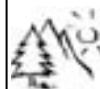
Class One at Crianlarich Primary School

Three new Primary Ones have joined our class and are settling in well. This term our topic is Houses and Homes. We have been learning about the different types of homes that people live in. We have looked at the houses we have in our village. We have been doing experiments to find out which materials houses are

built from and which materials are waterproof. We are making 3D models of our own homes. We have been researching what homes were like in the past. We are looking forward to another exciting year at Crianlarich Primary School.



Primary One



Crianlarich Store
Licensed General Store
& Post Office

Best Value Locally!

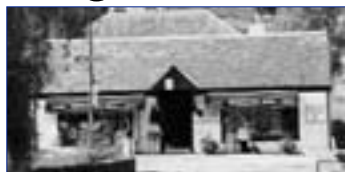
Come and see our range of special offers.

open 8am - 6pm 7 days!



Bryan & Isla Craig
Tel 01838 300245 fax 01838 300371
email shop@crianlarichstore.co.uk

Bridge End Mill



Hundreds of new lines just in, including Charlie Bears
Something for everyone, gifts for all occasions.

Very popular Willow Tree figurines,

Lilliput Lane collectables.

Border Fine Arts Animal Figurines,

Disney Figurines,

Yankee Candles.

Great Selection of jewellery at affordable prices.

Vast selection of Scottish Souvenirs.

Large selection of Sale items up to 75% off

Please pop in - you wont be disappointed.

Open 7 days a week from 10am to 5.30pm

Falls of Dochart , Killin
Perthshire , FK21 8XE
Tel : 01567 820508



Fit the best

Everest

Windows
and doors

Roof Line

Garage Doors

Conservatories

GRP Flat Roofs

For a free quote
contact

Ronald Gordon

01631 720074

or 07776 402550

THE GREEN WELLY STOP

AT TYNDRUM



more than you
can imagine.....

A family business in its third generation - established 1965

Visit The Snack Stop Café
Delicious Home-made Pizza
12 noon to 9pm



The Restaurant • The Snack Stop Café • Goodies and Gifts • Whisky Galore • The Perfect Present • The Outdoor Store • Filling Station

Visit our online gift, outdoor and whisky shop for the latest gifts, clothing or rare and collectable whiskies. Visit our 'blog' where you can keep up to date with what's happening at The Green Welly Stop.

www.thegreenwellystop.co.uk

Tel: 01838 400 271

MAIN BUSINESS HOURS:

FILLING STATION:

SNACK STOP:

ONLINE:

March - October 8.30am - 5.30pm

April - October 2am - 10pm

April - October 2am - 10pm

365/365 days a year

November - March 8.30am - 5.00pm

November - March 8am - 1pm

November - March 4pm - 10pm



Strathfillan by the Way

Café Sci (Café Scientifique)

Café Sci originated some years ago in France with the aim of enabling local communities to enjoy learning about science in a friendly and informal atmosphere. Asking questions and sharing ideas and experiences is an important feature of a Café Sci meeting.

<http://www.cafescientifique.org>
Strathfillan Community Development Trust has established a branch of Café Sci that meets in Tyndrum Village Hall. Four meetings have been arranged for the next session; Each meeting will be held on a Wednesday evening from 7pm to 9pm and light refreshments will be provided.

Café Sci meetings are organized along the following pattern:

7-7.30pm. Arrival and welcome with tea or coffee or wine. Meet the speaker.

7.30- 8pm. The invited speaker will introduce the meeting's topic (see programme).

8-9pm. More refreshments, questions and discussion.

Admission is free and speakers do not receive a fee. SCDT asks that those intending to come to a meeting should contact the Trust Office beforehand to help with catering. 01838 400 545 or email strathfillancdt@btconnect.com
There is no charge for refreshments, but a donation towards costs will be

welcomed on the night.

The topics are usually appropriate for students attending High School.

Wednesday 20th October

What has mathematics ever done for us?

Jack Lambert BSc PhD FRSE FIMA (Emeritus Professor of Numerical Analysis, University of Dundee) will not present any mathematics as such but will demonstrate how mathematical methods and models help to solve real life problems. Examples include the mystifying case of an aircraft ejection seat, improvements to the success rate of surgical bypass operations and the nasty matter of dealing with abandoned land mines.

Wednesday 10th November

Bird migration and the story of the Isle of May Bird Observatory

Niall Campbell (retired Under Secretary, Scottish Justice Department, now Treasurer of the British Trust for Ornithology and the Isle of May Bird Observatory Trust) reminds us that bird migration has always interested - and puzzled - naturalists. Information gathered at bird observatories has greatly increased our understanding of migration. Tracking technology is developing all the time and providing fascinating results. Amateurs and professionals have contributions to make to the study of bird migration.

Wednesday 9th February

Why are there so few trees and large

shrubs on our hills and should we have more?

David Mardon

BSc, MSc (entomologist, taxonomist and latterly manager at Ben Lawers NNR conducting pioneering work on restoring montane scrub) will show that treeline woodland and montane scrub have largely disappeared in Britain. How many of the scattered vestiges remain viable? Is there a future for these habitats, and how can we secure it? How would our natural heritage be enhanced by increasing our biodiversity?

Wednesday 16th March

Hydraulic applications: a simple step between a slide rule and the first law of thermodynamics

Nicholas Taylor recently resigned C.eng MIMechE (engineering apprenticeship with de Havilland leading to management and directorships with John Holt, Lockheed and Vickers Sperry Road) will explain how energy, which cannot be created or destroyed, can be converted through hydraulic flow and pressure to power machines. Hydraulics, the application of a force to a confined liquid, has enabled engineers to harness hydraulic power in a multitude of machines for human benefit in everyday life.



On A85 between Lix Toll and Crianlarich

MONDAY - THURSDAY - FRIDAY

for
COOKED TO ORDER
Lunch and Dinner Specials

Also Open all day from 11am
for

Bar Meals- Snacks - Sandwiches
Morning Coffee + Cream Teas
and

Take Away Services
(sorry not available on Sundays)

SATURDAY & SUNDAY

Our Second to None

A'La Carte

style carvery available
for

Lunch and Dinner
(Booking is advisable)

CLOSED NOVEMBER

CLOSED NOVEMBER

Tel : 01567 820434 Glendochart near KILLIN



Cruachan Restaurant

Enjoy home baked scones, cakes and cheesecakes amongst other desserts.

Our meals are freshly prepared to order and offer fresh Scottish Fayre.

We also have a fine selection of gifts, cards, postcards, collectables available for sale.

Open All Day for
Homebaking
Snacks
Lunches
& Evening Meals

Parties Welcome
01567 820302





KEVIN P HORSLEY MIOC

Est. 1986

now trading as



HORSLEY JOINERY & SUPPLIES

ROB ROY WORKSHOP

BALQUHIDDER - LOCHEARNHEAD FK19 8NX

01877 384274 kevin@robroyworkshop.co.uk mobile 07885 276573

KEVIN HORSLEY has been in business in Balquhiddar as Kevin P Horsley, Joinery and Cabinet Maker since 1986. In 1992, after working from a garden shed and the back of his van for six years, he built the Rob Roy Workshop adjacent to the Kings House Hotel in Balquhiddar. From this purpose built workshop and office Kevin has been manufacturing almost anything in wood, for example: doors, windows, kitchens, bookcases and conservatories, using all types of wood. Commissions have come from banks, hotels, private homes and historic buildings. Local examples of his work include the reading room cupboards and oak display stand at Balquhiddar Church and the large notice board at the entrance to Dunblane Cathedral.



Due to a recent illness Kevin has decided to restructure the business, so on the 20th of September he launched HORSLEY JOINERY & SUPPLIES which will provide the following services:

- Manufacture of purpose made joinery to your specification and design, for trade and DIY (supply only, not installation).
- Supply of standard joinery from other leading companies.
- Supply of joinery materials e.g. Hardwood, softwood, sheet materials etc.
- Supply of ironmongery and hardware.
- Supply of sundry items e.g. nails screws, bolts, adhesives, sealants etc.
- If any item is not in stock it can be ordered.
- Large quantities can be delivered direct to site.
- HORSLEY JOINERY & SUPPLIES can also offer a machining service, cutting, planing and moulding.

Whether you need a few odds and ends to save you travelling to Stirling or Perth- or you need a door or window that needs to match an existing one, give Kevin a call and talk to him about it.

Opening times: Monday / Wednesday / Thursday 8.30am - 7.30pm.

Tuesday 3.00 - 7.30pm Friday 8.30am - 7.30pm.

Or by appointment at other times.

Proprietor Kevin P Horsley MIOC



Computer corner



Christmas Gifts

I expect that two products will be selling well in time for Christmas. The first, probably the more popular will be the Kindle - an e-book device - and the other is likely to be Apple's iPad - a tablet computer.

Kindle - The device that allows you to read novels without the actual book. The online store Amazon have released their latest version of their e-reader device Kindle. This small, light gadget allows you to download up to 3500 books via a wireless or mobile connection and read them at your leisure whenever you wish. The device, which weighs just over 8 ounces, is a third of an inch thick, with a 6 inch screen, is expected to be the market leader for gadgets this Christmas.

For me, this would be a useful device, allowing me to have access to books when travelling, without the need to carry the weight of 3-4 paperbacks or

hardback books in my luggage. For others, the convenience of having all of one's books in a device smaller than a paperback book is a key feature.

This is not a new, but an updated product. For instance this version has improved contrast and improved font quality - allowing better reading even in sunlight. Current prices for the Kindle are £109 for the wireless version, and £149 for the 3G and Wireless version. Please note that 3G is a fast mobile network and is not currently available in our area.

iPad - a wireless touch screen tablet computer. This is an A4 size touch screen computer with no physical keyboard or mouse. It is a fully functional wireless connected computer which integrates with iPhone and other devices. Prices start at £425. This product has been available for some time, but now promises to become a leading product in the computing market. The iPad comes in a variety of configurations, some with mobile 3G technology. All the models are portable and are roughly the size of a pad of A4 paper.

Traditional Computers

For more traditional computers, including laptops and desktop products, I urge you to consider avoiding the widely advertised entry level systems, which typically contain old technology, or insufficient power to perform adequately. I suggest you set a budget and get the maximum specification that your budget allows. Current technology includes processors - Intel

i5 and i7 for instance - that increase power and performance if and when required, thus drastically improving computer and graphics speed.

Is your Internet Slow?

Recently many of my clients have been complaining that their computers are very slow, especially when browsing the internet. If your computer seems to be slow only when connected to the internet and you are confident that your computer is not infected with a virus, then your browser (Internet Explorer, for instance) may be the cause of the problem. Many applications install "add-ons" to your browser and many of these can slow machines down when browsing the internet, in many cases making the computer unusable. Typical add-ons are Search Bars, Security tool bars and features associated with online messaging. These add-ons are not necessarily viruses and will neither harm your machine nor steal your information, but they do have impacts on performance. There are many ways of improving browser performance, including disabling add-ons, removing temporary files and deleting browsing history. All these functions should be available to you from the menus within your browser. I suggest that you look at these settings regularly, so that you can ensure you get the maximum performance from your machine.

Mark Lincoln
01567 820 369
0778 6633877

YOUR COMPUTER MANAGER

www.yourcomputermanager.co.uk

For all of your home and business needs including:

* SPECIALIST IN SUPPORTING RURAL BUSINESSES

- * Supply of leading brand hardware and software
- * Monthly Support Contracts
- * MOTs of equipment
- * Fixing hardware and software problems
- * Data backup and recovery
- * Removal of viruses
- * Broadband and Wireless network services
- * Commissioning new computers



Don't Fret – Help is at hand

SPECIAL OFFERS
ON ONLINE BACKUP

SPECIAL OFFERS on LAPTOPS and DESKTOPS
Including ACER, DELL, Fujitsu, HP, Lenovo & Sony



APPROVED PARTNER

Mark Lincoln – over 20 years professional computing expertise
Telephone: 0778 6633877 or 01567 820369





Mervyn's Weather

Once again St. Swithin has left his mark on the 40 days subsequent to "his day" (15th July) and while the last 10 days of this month were acceptable - just - and the August rainfall not too overwhelming, the overall picture was unsettled and unreliable. A brief interlude in mid August gave four days without precipitation, this window allowed some good quality haylage etc. followed by odd days sufficiently benign for aerial bracken spraying and right at the end of the month, following a day of bitter NE wind - snow reported Cairngorms and Ben Nevis - August departed in a blaze of glorious sunshine.

Much of human endeavour over the millennia seems to be transportation of people and objects from one site to another which requires access to suitable routes. In the early days footpaths suitable for humans and horses sufficed until the wheel was invented, things then took a leap forward, "made" roads, metalled with gravel or paved like Roman roads were the order of the day.

However with the advent of motor transport with solid rubber, then pneumatic tyres and also the achievements of Mr. McAdam, increasingly road transport became big time with even minor country roads being tar-McAdamed and arterial roads graduated into our modern motorways. What then has all this got to do weather wise?

Quite a lot really. Anyone who has indulged in severe weather-blighted journeys over long distances is aware of the possible and probable hazards. Initially snow-ploughs were just a "Vee" construction pulled by a horse. This was all right provided the drifts were not too deep for the horse, if so manpower and shovels cleared a way.

Although over the past twenty years or so winters have produced little snow, except perhaps in more prone districts, to warrant the use of modern ploughs or snow-blowers, conditions can and do occur. The aftermath of a long spell of snow and frost and perhaps heavy rain has, as we have seen in 2010,

detrimental effects on road surfaces. However in any set of circumstances there are always winners and losers. In cases such as aforementioned, manufacturers of vehicle springs and aids to suspension, vehicle repair businesses, recovery vehicles and, last but not least, those who provide traffic-cones, must be but a few who benefit from the pot holes, subsidences, flood and frost damaged roads subsequent to a wintry spell.

While the "Green" element is enthusiastic about reducing climate change by encouraging wind farms, electricity pylons and the like, little mention has been made of the effect that construction of these edifices could have on the environment, more roads, more heavy vehicles, visual pollution and, indeed, increased emissions of greenhouse gases - full circle, weather again!

Mervyn K. Browne
Ardtalnig



Tel: 01567 820272
Fax: 01567 820080
email: reservation@bridgeoflochay.com
www.bridgeoflochay.com
Partners: Amanda Clark and Bob Stevenson

BRIDGE OF LOCHAY HOTEL

Good Food • Drinks • Accommodation

Enquire now for our pre-Christmas Lunch and Dinner menu to avoid disappointment.

Big Plans For The Big Shed

Plans for The Big Shed at Tombreck are still gathering momentum and construction is continuing according to original targets.

The roof timbers are now in place and the walls have all been stuffed with sheep's wool for insulation by a large band of volunteers doing a grand job and enjoying the stunning loch views from aloft while working alongside the local construction team of Blairish Restorations despite the bad weather and storms that have swept through Perthshire recently. Their next task is helping with the lime/clay plastering of the walls and in the future getting involved with landscaping and reed bed construction. Over fifty volunteers have helped with the project so far. There is always lots to do and plenty of new skills to learn and everyone agrees that they are not only enjoying the experience but now know a lot more about ecological construction.

The architects "ea" (Ecological Architecture), Sue Manning and Mary Roslin, are proud of the new community resource which will be an exemplar of eco-design with low carbon emissions and a reduced carbon footprint. There have been plenty of visits from interested local people and anyone who still wishes

to observe the construction progress and to discuss

future plans is encouraged to get in touch and come along for a visit and chat with Jane Watts, the new Development Officer of The Big Shed.

The Big Shed will become a wonderful resource for the local communities all around Loch Tay, Glen Lyon and beyond, providing a venue for workshops, events, meetings and also supplying workspaces for local people to develop skills and talents. The hub for The Loch Tay Food Chain will be based at The Big Shed. This is an initiative to link local residents and businesses to locally grown produce and very successful interest meetings for this project have already been held in Fearnan and Killin. Local people shared their views and ideas with Jane, who has been outlining the Loch Tayside Community Interest Company's well



thought out vision of the Loch Tay Food Chain. Katy and Dolan, residents at Tombreck, answered questions on finance, logistics and other details and all the proposed plans from locals will be taken on board. Plans to hold similar meetings on the south side of the loch and in Glen Lyon are in progress.

For a chat or to arrange a visit to The Big Shed contact

Jane Watts

Project Development Officer
07766 566935

jane@bigshed.org.uk

D. Gourlay Butchers



High Class Family Butchers &
Deep Freeze Suppliers
15-17 EAST HIGH STREET, CRIEFF,
PH7 3AF
VAT Reg No 269028050
Telephone: 01764 652707
Mobile : 07808472395

**MEAT you at the DOOR with
our Mobile Butchers Shop**

We will be in the Killin area on
Tuesday & Friday afternoons
between 3 and 5.30pm

Telephone orders ready for collection
or delivery

Locally selected beef, lamb, pork,
chicken & bacon

Have you tried our homemade
steak pies?

Clachan Cottage Hotel Lochearnhead



The clachan is open all day for bar meals, teas and coffees try our new menu and dine outside watching the waterskiing on Loch Earn, surely one of Perthshire's most beautiful spots to dine

Active Scotland ski school welcomes beginners and is based at the Clachan. Quad bikes also Entertainment every SATURDAY night starts at 9

It's where everyone else goes!
Live bands disco or karaoke
the weekend starts here

Accommodation, Functions, Stag/Hen parties, All welcome
www.clachancottagehotel.co.uk tel. 01567830247

Frost Report



More or Less

After last month's article I received a letter via the Killin News and I opened it with trepidation thinking that it was from a cycling organisation! But it was from a reader in Somerset who reported that instead of seeing fewer swallows they had seen a marked increase. It is only now, at the end of the summer, that we can really see the effects of the harsh winter last year. On the Yorkshire moors grouse were seen very close to villages during the winter. They were not hoping for a bit part in Heartbeat but were sheltering as best they could from the weather which, people predicted, would vastly reduce numbers. But in fact it has been an excellent year down there and I was loading at a shoot on the 12th and 210 brace of birds were shot. Around here there was one more grouse alive to fly another day last week. While out stalking I heard the rush of wings overhead and, looking up, I watched a grouse manage to outfly an eagle that chased him unsuccessfully for quite a distance. Also in the bird world there seems to continue to be a steady increase in ospreys in the area. One was seen as late as the beginning of September in Glen Lochay and may

have been the one that had been caught in fishing nets at the Kenmore end of the loch and has recently been released there. Ravens too, even with their nesting so early in the frozen days of February seem to have done well. We are certainly seeing and hearing more in the Glen and I came across 18 feeding together on a dead sheep last week. Some mammals also seem to have done well, not always the ones that we want to increase. There have been reports of numbers of mink once again moving out from their 'holding area' at the head of the loch and Firthush. They are fierce, indiscriminate and relentless killers which can wreak terrible havoc amongst ground nesting birds and probably have been responsible for the diminishing numbers of oystercatchers in the area. The pine martens are still leaving regular calling cards around our house and my son saw one in daylight on his shed roof at the old mart - let's hope that they are not going to become as big a problem as the urban fox. The stags seem to be in mint condition after the snow and frost. Of course there were fatalities but red deer have survived harsh winters for many years

and have certainly done well this year. They would appear to be in more danger from the proposed changes in culling season, the increase in licences to shoot out of season and the fencing of large areas for regeneration with no regard for their movement to low ground when necessary. This has taken place in several places and has proved unsuccessful. Let's hope that now that S.N.H. and the Deer Commission have amalgamated they can be relied upon to monitor this situation properly! At least The Heather Trust is finally to begin research into the control of heather beetle, which has not been stamped out by a hard winter as predicted. This may be due to the fact that it is affecting a grouse moor where research is being carried out into the effect of hen harrier predation on grouse numbers. There seems to be no more up to date information on heather beetle since the publication of 'The Grouse in Health and Disease' in 1912. On the note of insects surviving the cold - as you just may have noticed - the midge has not diminished either. More like 'what doesn't kill you makes you stronger!'

Tim Frost

FIREWOOD LOGS FOR SALE

Hardwood and Softwood Logs
Sold in bulk or handy net bags
Air Dried and Kiln Dried Kindling

Please Call Dawn
07795 966 514 – 01877 331930

OR
Email

tartantimber@hotmail.co.uk

CAN BE DELIVERED OR COLLECTED



**10% Local Discount on all
'Sit in' meals between
5pm and 7pm throughout October
just mention the Killin News advert !**

**Full Takeaway Menu
available- all your favourites !**

**Book now for your special event or
family get together
A full range of menus available**

For more information
or to make a booking
call

**01567 820619
077109 19265**

Flu Clinic

Over 65?
Macmillan Cancer Support and
Killin Medical Practice
invite you to a

Coffee Morning

McLaren Hall, Killin
Friday 15th October
10.00 am

OR

Crianlarich Village Hall
Friday 22nd October
10.00am

While you are there you can
have a flu jag

Under 65?

If you normally have a flu jag
each year and are in the
at risk group, you are more
than welcome to come along
(All proceeds go to
Cancer Research UK)
Any queries?
Phone 01567 820213

Fire and Ice Festival

The 'Fire and Ice' festival will take place at the Iron Age complex by Kenmore and will include an exhibition showcasing the works of Scottish and international artists, a series of workshops open to both artists and the public and a dramatic evening finale featuring flame-lit ice sculptures in the lochside woods and burning sculptures in the loch, along with drumming and stories of fire and ice myths and legends

Sculptor and pyrotechnic specialist Kestutis Musteikis from Lithuania will lead the sculpting workshops and fire show

Allison Weightman will run the ceramics sessions
Georgia Crook will run the willow weaving workshop
Claire Hewitt will recount traditional myths and legends

Rural Tayside LEADER is supporting this new collaborative venture between the Scottish Crannog Centre and Perthshire Visual Arts Forum which brings together international & local artists and the community

'Fire and Ice' will run from 29th November to 5th December at the Scottish Crannog Centre. Further details and ticket information are posted at www.pvaf.org.uk and www.crannog.co.uk Numbers are limited so please book early to avoid disappointment

Killin Toddlers Group

1st Thursday of the month
10am
Killin Church Hall

This is a place for
children to play together
and meet new kids
parents get the
opportunity to chat to
other parents and meet
new people
There's no charge

For more information
contact Marieke McBean
info@marieke.co.uk
07762 689612

The Boathouse Bar and Restaurant

Loch Tay Highland Lodges, Milton Morenish, Killin FK218TY
3 Miles from killin

CHRISTMAS MENU

£38.00/Per Head £15.00 For Kids
Bookings from 12pm to 3pm

STARTERS

Chicken Laskin Soup
With Fresh Herb Croutons

Smoked Salmon Parcel
Served with Assorted Mussels and Lemon and Capri Dressing
Salmon, Lamb and Walnut Tart
With Pear Purée

Chicken and Herb Herb Terrine
With Homemade Pateau

MAINS

Traditional Roast Turkey
With Apricot and Chestnut Stuffing
Killed Sausage and Honey Glazed Root Veg

Poached Supremes of Salmon
Served on a Salmon, Mussel and Cham Broth

Fillet Steak on Smoked Bacon Daubechise
Served with a Wild Mushroom and Madeira Sauce

Aubergine, Spinach and Ricotta
Lasagne
Served with Green Bean and Olive Salad

DESSERTS

Cinnamon Pudding
Served with Brandy and Blueberry Sauce

Brown Sugar Meringues
Served with Chocolate and Hazelnut Cream

Passion Fruit Crème Brûlée
Served with Homemade Short Bread

Christmas Menu also Available for

We are situated on the beautiful banks of Loch Tay.
Come out and enjoy our fantastic homemade meals, relax and appreciate the stunning views from your inside table or from the sunning dock. Enjoy refreshing chilled drinks and sumptuous homemade desserts!

Great atmosphere for all

Plenty of free parking

Family orientated Restaurant

Beers on tap

Open for Lunch and Dinner

Please call us on 01567 820853 for a booking or email
boathouserestaurant@yahoo.co.uk
www.lochtay-variations.co.uk

Situated next to Legend Sailings - Outdoor activities available, Archery,
Kayaking, Mountain Biking, Sailing etc

Opening Hours

Monday Closed, Tuesday 6pm for dinner - open till late
Wednesday, Thursday, Friday, Saturday and Sunday Open at 11am, lunch
served from 12pm till 2.30pm,

Dinner served from 6pm till 8.45pm.

Cut this slip out and bring it along to receive a free bottle of wine
(Dinner Only)

Killin Highl

Ron Aliner



What a fantastic day we had at this year's Highland Games. Changing the arrangements for the Open Competition with the Strongmen brought in double the entries and a special band from Amsterdam played throughout the afternoon. We could not have asked for a better day and with the sunshine, Highland Dancers and the pipers, everyone had a great time and no-one wanted to leave.

We would like to thank everyone who helped out because without them we would not be able to put on such great Games. If you would like to join the Committee or help on the day, please let me know.

Yvonne Gillies
Games Secretary

David Robertson



David Robertson



embgraphics

We create...

Logos, stationery & brochures,
adverts, flyers, leaflets & postcards,
shop signs & vehicle graphics, web
site design & hosting.

Drop into the studio in Aberfeldy
or give us a call to arrange an
appointment.

visit www.embgraphics.co.uk
or email design@embgraphics.co.uk
T: 01887 829 837 M: 07714 514 149
6 dunkeld st. aberfeldy. ph15 2da



Doune Woodyard Ltd
Unit 2 Lochil Industrial Estate
Doune
Perthshire
FK16 8AU
Tel: 01796 841204
Fax: 01796 841122
E-Mail: sales@dounewoodyard.co.uk

Suppliers of Timber, Interior Finishes, Sheet Materials and Fencing
Also a Large Selection of Hardware Supplies Available in our Shop

RTA Plant Hire

Hire of Excavators 1-3 ton, Dumpers, Skid Steer Loaders,
Cherry Pickers and Many Other Items
Please Phone 01796 841121
For Further Information and Availability
Hire of 5 Berth Motor Home Now Available

Land Games



Main Street
Killin
FK21 8XB
Tel/Fax : 01567 829366
pfkperformance@btconnect.com

**** All makes of Cars and Commercial catered for ****



- Servicing
- MOT Repairs / Pre MOT Checks
- Electronic Diagnostics
- Tyres (Incl Fitting & Balancing)
- Exhausts
- Parts
- Breakdown Recovery
- 4- Wheel Alignment
- Electronic Tuning
- Performance Exhaust Systems
- Performance Suspension

We can Service your NEW CAR or VAN without affecting your Warranty



In Fearnan, take Fortingall Rd.
for 100 yds. then turn right

Tel: 01887 830251



McLaren High School News

Top Team and House Teams for 2010/11



Angus Waite, Madeleine Darby, Harry Cordner, Peter Martin (Headteacher), Jessie Menzies, Joshua McInnes, Jennifer Warnock.

Head Girl

Deputy Head Girls

Jessie Menzies
Madeleine Darby
Jennifer Warnock
Harry Cordner
Joshua McInnes
Angus Waite

Head Boy

Deputy Head Boys

House Captains:

Bracklinn Captain
Vice Captains

Rebecca Davis
Calum Fountain
Luke Melia

Dochart Captain
Vice Captains

Bethany Ross
Fraser Graham
William Vernon
Ruairidh Leishman
Rosalind Bennie
Andrew Orr

Leny Captain
Vice Captains

Children's Sunflower Competition

Tallest Sunflower

1st	Tegan Dowling -	275cm
2nd	Beth Allan -	227.5cm
3rd	Ellie Ridgewell -	223cm

Largest Open Bloom

1st	Tegan Dowling -	28cm
2nd	Emily Crow -	24cm
3rd	Beth Allan -	21.5cm

Opposite is a photograph of most of the participants with their certificates. Unfortunately the wind snapped most of the sunflowers before we got a picture them!

The Studio



Main Street, Killin Tel. 01567 820820

We have a large selection of Original Artwork and Prints and a large selection of affordable gifts, Toys and much more - all can be reserved.

High Quality Picture Framing Service
and picture glass supplied.

Passport and ID photos.

Closed on Wednesdays.

Come and visit us and be sure of a warm welcome

www.thestudio-killin.co.uk



Rural Stirling

HOUSING ASSOCIATION

Do you need a new home in any of these areas?

Lochearnhead	Killin	Callander
Tyndrum	Strathryre	Balfron
Aberfoyle	Drymen	Buchlyvie
Kippen	Gartmore	Deanston

If so, Rural Stirling Housing Association may be able to help.

The Association's aim is to support rural communities in north and west Stirling by providing and managing affordable good quality homes for people in housing need.

We currently have 450 homes for rent throughout the Stirling Council area

If you would like more details and an application form contact

Rural Stirling Housing Association

Stirling Road, Doune

Tel: (01786) 841101

E-mail: Enquiries@rsha.demon.co.uk

Registered as a Scottish Charity No SC037849

Killin Primary School



Primary 1



Ms Nicola Campbell



Certificates awarded to Sunflowercompetition entrants



Primary 7 Leavers celebrating
Douglas's birthday
and the High School Ceilidh

CENTRAL SCOTLAND RAPE CRISIS & SEXUAL ABUSE CENTRE

We exist to provide a free and confidential service of emotional support and practical information on legal and medical issues to survivors who have experienced Rape, Sexual Assault or Child Sexual Abuse, throughout Central Scotland. Our telephone helpline is staffed by trained volunteers and offers long or short-term support by e-mail, letter, telephone or face-to-face counselling. We also deliver training, talks and presentations on all aspects of sexual violation, to professionals and other interested bodies.

Telephone Helpline 01786 471771

*Tues/Weds 11am - 1pm Thursday 7 - 9 pm Sunday 1 - 3 pm or
write to P.O. Box 48, Stirling FK8 1YG or to P.O. Box 28, Falkirk, FK1 1AA
Email - csrcc@ic24.net*

Web site - www.rapecrisiscentralscotland.co.uk



dave hunt ASIPP ARPS
photographer

Portraits for Kids, Families, Pets, Weddings and Business.

Autumn Portraits offer

Call now to book a photo session for that individual christmas gift presented as a framed print or coffee table book.
Prices from £75 inc. Gift vouchers available

Dave and Gill Hunt
The Sheading, Wester Lix, Killin, FK21 8RD

t: 01567 820 990
m: 07887 588 573
e: dave@dPhotographic.co.uk

www.dPhotographic.co.uk





Heart to Heart
Bringing Hope to those affected
by divorce or separation

**Support for those affected
by Divorce or Separation**

Are you, or someone you know,
going through or suffering from the
effects of a broken relationship?

Feeling overwhelmed, lonely, depressed,
hurt, lacking confidence and self-esteem,
bitter and angry?

Or wanting to help a friend or relation
going through a difficult time?

We provide a range of support services

- telephone support,
- 1-1 support,
- 6 week support courses,
- signposting to websites
- support evenings,
- useful reading

For more information contact:

01877 339966 or 07790 437713

Email: info@hearttoheart.org.uk

Room 3, Callander Kirk Hall, South Church Street,
Callander, FK17 8BN

Killin Primary School

Staffing

Ms Nicola Campbell has joined us from Thornhill Primary School and is really enjoying her new post.

Judy Holden

As I'm sure you are all aware, Judy has started treatment for a serious illness. Despite this, she is remarkably upbeat and positive about her situation and her courage is an inspiration to us all. Judy is currently fundraising for the purchase of an ultra sound scanner and any donations towards this can be made at the school office. I am sure you will all join me in passing on our best wishes to Judy and her family.

Eco Schools

As part of our Eco Schools programme there will be a recycling container in the playground to enable old clothes and shoes to be collected enabling the school to earn money for funds. The community are welcome to use it as the more clothes we collect, the more money we will raise for school funds.

Our Topics

Primary 1/2/3 are doing the topic How We Used To Live this term. We have brought to school our baby photos and drawn pictures of the

playground in the past. We will now be looking at Killin in the past.

Becca

We are also learning about Materials. We went outside and looked for materials to stick on our banner. We found flowers, some grass, leaves, sticks, plastic wrappers and crab apples. We are going to collect lots of materials and sort them.

Liam

The New Primary Ones

When we came to school we had fun on the climbing frame. We learnt that we had to have turns because lots of us would get hurt. It's good fun on the computers learning how to write on them.

Caitlyn

Tree Planting

A big thank you to TRANSERVE who have removed tarmac from parts of our playground. This will allow the Eco Group to plant fruit trees! They also fixed our play mat under the climbing frame. Thank you!

Mr Lunan

Fire Safety Visit

On Thursday 2nd September Heather from Central Scotland Fire and Rescue service came to teach us about fire safety. She showed us a video of a bedroom that was set on fire because someone dropped a

match (they set the room up to demonstrate what would happen to a bedroom in a fire). She taught us about fire hazards by giving us all sheets and asked us to circle all the fire hazards such as over-loaded sockets and leaving a candle next to the curtains. She said we should test our fire alarms at home once a week (preferably on a Sunday morning) and give it a birthday for when we change the batteries.

Hazel P6 and Georgia P7

RME and Home Team Challenge

P6/7 are taking part in Home Team Challenges. We are in groups of five or four and we came up with group names. They are: *Diversity*, *No 'I' in Team*, *Stronger Together* and *Inspiration Pyramid*. Nearly every week we are given a new challenge. Some challenges are to do with our topic which is the Highland Clearances or it could be about RME. We also get home team points. You can be awarded points for doing lots of things e.g: helping people, being kind and considerate, following school and class rules, following teacher's instructions and working hard.

Ellie P7 and Aarron P6

The Capercaillie

Fully Licenced Restaurant and En Suite Rooms

Relax by our log fire and view our beautiful garden by the river Dochart.

Excellent service and quality home made food

Breakfasts

Lunches

All Day Meals

Home Baking

Take Away Snacks, Meals and Pizzas

Private Parties Catered for

For Bookings Telephone Myra on

01567 820355



(Also Insurance Services and Financial Services)

A fully integrated quality service for you and your business

Castlecraig Business Park

Springbank Road, Stirling

FK7 7WT (t) 01786 451745

Ancaster Business Centre, Callander

FK17 8EA (t) 01877 331700

6 Shillinghill, Alloa

FK10 1JT (t) 01259 217000

Email: toms@macfarlanegray.co.uk

Web site: www.macfarlanegray.co.uk

Macfarlane Gray Insurance Services Ltd and Macfarlane Gray Financial Services Ltd are authorised and regulated by the Financial Services Authority

Macfarlane Gray Chartered Accountants is registered to carry out audit work and regulated for a range of investment business activities by the Institute of Chartered Accountants of Scotland

HOUSING OPEN DAY

6th October 11am - 3pm



**Trust Housing Association
Ballechroisk Court
Killin, FK21 8TD**



**Come and view a range of
single and double bedroom
properties, designed for the
over 50s**

**Show flat available to view
Available for immediate let**

**Communal Lounge/Communal Laundry/
Guest Bedrooms**

For more information contact : Mary Munro 0131 444 4955

**Trust Housing Association, 12 New Mart Road, Edinburgh, EH14 1RL.
Scottish Housing Regulator Registered No. HEP 143.
A registered Scottish Charity No. SCO09086.**

Soup Sandwich Lunch

Saturday 6th November

Lodge Breadalbane St. Fillans
will host

a **Soup and Sandwich Lunch** in
the Lesser McLaren Hall
12 noon to 2.00pm

Home made soups, an assortment
of sandwiches, tea or coffee
and a biscuit will be served
- great value at £5 per person -
and there will be a raffle in aid of
the re-formed Killin Youth Group
Enjoy a lunchtime snack
with no washing up
The Lodge Members look forward
to serving one and all
with a tasty snack



J. CAMPBELL

Monemore Killin

Plumbing and Heating

Tel : 01567 820413

Mobile : 07810 600636

Free Estimates

jasoncampbell@tiscali.co.uk

Killin Youth Group

The Killin Youth Group has been up and running since Easter this year and is open to all pupils of secondary school age. Regular Tuesday sessions will form the backbone of the groups activities and be complemented by various trips and fundraising activities. Over the coming months we are hoping to fill our programme with a variety of activities aiming to cover everyone's interests, including sports nights, art and music workshops, cinema nights, games nights and outdoor activity days. As part of this we would like to make use of the skills and interests of local people. Perhaps you have an interesting or unusual job or skill or are a member of a club or team and would be willing to give a couple of hours of your time to get involved with the youth group. We are also looking for volunteers to help out with the group on an occasional basis, so if you are interested in either way, please get in touch with me.

Pete Waugh
07786 558861

Voter Registration

The annual voter registration form should have dropped through your letterbox by now. Approx 125,000 forms are being posted by the Electoral Registration Officer and over 5000 properties have already responded to a request to confirm no changes by e-mail or telephone. Everyone is encouraged to read the form and, if everything is correct, to respond as soon as possible by e-mail, telephone or text. Anyone unable to return the form in these ways can still respond by signing the form and returning it by post in the reply paid envelope.

Where changes are necessary the form should be amended then signed and returned by post, fax or scanned e-mail attachment.

The completed forms need to be received by the ERO to ensure that the electors at your address are included in the 1st December Register of Electors. Failure to respond can result in the current names being deleted from the Register and once deleted you cease to be eligible to vote in any election and can have credit referencing difficulties.

Electoral Registration Officer, Hillside House, Laurelhill, Stirling FK7 9JQ
Tel 01786-892289 Fax 01786-92255
www.saa.gov.uk/central or
www.aboutmyvote.co.uk

HOUSEPROUD PERTH ROAD CRIEFF PH 3EB

A NEW BED THIS AUTUMN !

**WE STOCK A GOOD RANGE OF QUALITY BEDS AT PRICES TO SUIT
EVERY POCKET.**

**WE CAN DELIVER, ASSEMBLE YOUR NEW BED AND TAKE AWAY
YOUR OLD ONE**



CONTACT US ON 01764 656444 / 652999

**OR BETTER STILL COME INTO OUR SHOW ROOM AND TEST OUT THE
BED FOR YOURSELF**



Herb Society

Subscription £8 plus £1.00 at each meeting
non Members always welcome

Wednesday 20th October

Bee Drive (variation on a Beetle Drive)

Fundraiser for visit from Wisconsin Herbies

Aberfeldy Town Hall 7.30pm Tickets £3.50

Wednesday 17th November

AGM followed by Memories of Wisconsin

Aberfeldy Town Hall 7.30pm

Wednesday 8th December

Christmas Luncheon Green Park Hotel, Pitlochry

12 noon for 12.30pm Cost £25 Book in advance through

Judy Forster 01567 820 298

Wednesday 19th January

Natural Dyed Silk Scarves Practical demonstration

by Patty Hope, Aberfeldy Town Hall 10am-12 noon

Wednesday 16th February

Mediterranean Cookery Demonstration by

Mr. Ezz-irani of La Meridiana

Aberfeldy Town Hall 10am-12 noon

Wednesday 16th March

Prevention & Care of Heart Disease with Herbs, Nutrition

and Exercise with Govindha McRostie OMD ND of

Albion Biologic, Aberfeldy Town Hall 7.30pm

Wednesday 20th April

Grow Your Own Drugs, Film featuring James Wong,

President of the Herb Society UK

The Locus Centre, Aberfeldy 7.30pm

Wednesday 18th May

Annual Outing - details to follow

Wednesday 15th June

Visit to the Big Shed, Tombreck, Loch Tay

Breadalbane Tourism - a Call to Action!

A local Tourism Group has put out a Call to Action to all tourism related businesses in the Breadalbane area.

The Breadalbane Tourism Group has been set up by a wide ranging group of like-minded business owners who see the opportunity to create a much stronger awareness of the Breadalbane area and so increase visitor numbers and time spent in the area.

The Breadalbane area is hugely fortunate in that it already benefits from brown tourist signage at many strategic routes across Perth to the Oban area. The extensive area ranges from Kenmore to Comrie and Tyndrum to Killin. Its name is historical and the area offers everything that any visitor could possibly ask for in terms of a quality experience. However most visitors and many locals have no awareness of the name and what it means.

The group would seek to significantly change this perception - locally, nationally and internationally by

working together and using simple but effective marketing. Surrounding areas are marketing themselves aggressively e.g. the Highland Perthshire Destination Management Organisation by appointing a full-time organiser for the next 3 years. If we in Breadalbane don't respond, we risk becoming Scotland's best-kept tourism secret. No one will do this for us - it's time to act on our own behalf in the interest of the businesses and potential visitors to our area.

The group is looking for business owners who would like to be a part of this initiative and whose businesses would benefit or who feel that they might have something to offer. Be a part of something that will surely make a difference.

Ken Chew

Chairman

g@morenishmews.com

01567 820527

Also Vehicles , Signs etc

The Coach House Hotel

Killin

Tel: 01567 820349



Home cooked meals

(served all day until 8pm)

Accommodation

Bar with pool table

Real Ales

Live Music

Think About It

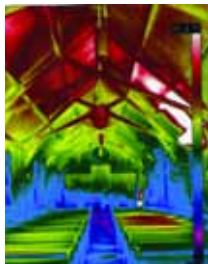
Perhaps the most effective advertisement ever written appeared in a London newspaper early in the 20th century: "Men wanted for hazardous journey. Small wages, bitter cold, long months of complete darkness, constant anger. Safe return doubtful." These were words written by Sir Ernest Shackleton, the famous South Pole explorer. Commenting on the overwhelming response he received, Shackleton said, "It seemed as though all the men of Great Britain were determined to accompany us."

Shackleton's words remind me of Jesus' words recorded in Matthew's Gospel 16:24, "If anyone desires to come after Me, let him deny himself and take up his cross and follow Me." The Lord was calling people to go with Him on a hazardous journey - the way of the cross. He issued that call after telling His disciples that He was going to Jerusalem to suffer and be killed.

Through the centuries, thousands have responded to Jesus' words by forsaking all to follow Him. But unlike Shackleton's expedition that finally came to an end, Christ's work goes on and volunteers are still needed. He continues to call for those who will serve Him whatever the cost. It remains true that a faith that costs nothing and demands nothing is worth nothing.

Ladd Fagerson

News from the Tin Tabernacle



During the summer the congregation and their project team have been busy finalising drawings and documents for the repair project. In June Historic Scotland's Conservation Group undertook a thermographic survey of the church. Infrared thermography (or thermal imaging) detects infrared radiation. Infrared is not visible to the naked eye but it can be detected by special cameras which convert the intensity of radiation to a visible image. The survey at St Fillan's has helped to identify hidden areas of damp and air leakage, as well as the structure of the timber frame beneath the corrugated iron. This information will help the repairs once the works start on site.

Fundraising has continued and the Killin Choir concert and dinner held in conjunction with the Parish Church was a great success with £1,000 raised for the two churches. There has also been a good response to the general appeal. All contributions are very greatly appreciated and the congregation would again like to thank all those in the local community and further afield for their support. Keep a look out for the St Fillan's tea towel

which will be on sale locally shortly.

In August the church had a visit from Bruce Crawford MSP accompanied by Provost Fergus Wood. The project was discussed and Bruce confirmed his support.

Sonya Linskaill
Project leader



Mobile Library

Tyndrum/Crianlarich

Fortnightly Fridays
Oct 15, 29 Nov 12, 26

Tyndrum

Station Road 10.50 - 11.10
Clifton 11.15 - 11.40
Mansefield 11.45 - 12.00

Crianlarich

Willow Square
12.05 - 12.35
Police Station & School
1.40 - 2.30
Benmore 2.35 - 2.55
Suie Lodge 3.05 - 3.25

Glen Lochay/Ardeonaig

Fortnightly Mondays
Oct 11, 25 Nov 8, 22
Glenlochay 10.50 - 12.30
Ardeonaig 2.00 - 2.45



MAINS of TAYMOUTH KENMORE - ABERFELDY



"The Perfect Family Day Out!"

<p>BOATING LOCH TAY BOATING CENTRE</p> <p>LOCH AND RIVER BOAT ON WATTSVILLE AND TAY CARIN CHRONING POWER BOATS, LARGES FISHING BOATS & PUNGS SMALL SELECTION OF FISHING EQUIPMENT</p> <p>01887 830291</p>	<p>CAFE BAR & RESTAURANT THE COURTYARD</p> <p>SINGLY FINE RESTAURANT AND AN OPEN FIRE-HEATED BOATING DELICIOUS COFFEE SALADSTOCKS FISH AND A FANTASTIC SELECTION OF FINE WINE & WHISKY</p> <p>01887 830763</p>	<p>STABLES MAINS of TAYMOUTH</p> <p>PURE BRED - THOROUGHBRED FAMILY HORSES - LOANED LESSONS BY RIDE AT GROUP OR PRIVATE OPEN ALL YEAR HORSEWOMEN ASSOCIATION</p> <p>07809 659577</p>	<p>DELI & GIFT SHOP THE COURTYARD</p> <p>THE PERFECT SHOP FOR BUYING THAT SOMETHING SPECIAL HOMES THINGS LEFTS CREATE YOUR OWN HAMPER STATION NEW MAINS of TAYMOUTH CLOTHING RANGE</p> <p>01887 830756</p>	<p>GOLF KENMORE GOLF COURSE</p> <p>"PITCHER'S FINEST 4 GOLF" 9 HOLES IN 1 ON WEEKENDS 9 HOLES IN 1 ON WEEKENDS BAR & RESTAURANT AVAILABLE DRINKS & SNACKS AVAILABLE AVAILABLE</p> <p>01887 830226</p>
---	--	--	--	---

Luxury 5 star Holiday Cottages & Investment Properties

www.taymouth.co.uk - 01887 830226

Cycling and Fundraising

Nifty Fifty Cycling Team

At the age of fifty, I decided it was time to cycle the Sustrans route which passes through Killin, from Glasgow to Inverness, as part of my birthday celebrations! Eight brave (mad?) volunteers agreed to come along for the ride. We set a training schedule and aimed to get fit over the summer to ride the 215 mile route. In the meantime, sadly, our friend Judy Holden was diagnosed with a brain tumour and planned to host a fundraising barbeque on the Saturday of our travels so Julie Rhys and I decided to join in the fundraising with sponsorship for our bike ride from friends further afield. We set off on a Thursday afternoon from Glasgow having already persuaded a friendly train traveller to part with some money for our cause. Our trip divided up into a 20 mile evening ride to Balloch - lovely; 60 miles to Killin - tough; 40 miles to Pitlochry - lots of coffee and cakes; 60 miles to Aviemore - longer than we thought and 40 miles to Inverness over Slocht summit - easier than we thought. Thoughts on the journey - Youth Hostels are much better than they used to be with lovely 3 course dinners and cooked breakfasts provided (less food to carry!). Padded shorts are great for cycling. If it's pouring rain before 7 it usually does stop by eleven - but you may

be very wet by then! Scotrail guards are extremely friendly and helpful to cyclists - maybe it was Julie's lycra! Women of a 50ish age have more stamina and resilience than you realise and make a great team. None of us have laughed so much or so often for a long time. Lastly, Scotland has so much beautiful scenery. The ride from Aviemore to Boat of Garten over purple heather-clad moorland was spectacular. People are extremely generous. Julie and I have raised over £500 between us with more donations to follow. We hope others will make the journey over what is a spectacular cycling route and have as much fun as we did, and no punctures either! Thanks to our support teams back home and to Les for kindly driving us back from Inverness, as we could not get our bikes booked on to a train that fitted our schedule.

Elaine Turner



Killin Produce Show Results

Handcrafts cup:

Morgan McLarty

Photography cup:

Grace Mckechnie

Homecraft cup:

Bunty Macgregor

Baking cup:

Bunty Macgregor

Produce cup:

Margaret Ogilvie

Vegetable cup:

Sue Manning

Flower cup:

Jill Stroyan

Floral Art cup:

Cathie Reid

Girls cup:

Emma Aitken

Boys cup:

Duncan McDiarmid

WRI Silver Salver:

Killin

A. C. FRASER & SON

PLUMBING, HEATING & ELECTRICAL CONTRACTORS



**GAS
safe
REGISTER**

**MAIN STREET
KILLIN
PERTSHIRE**

TEL & FAX
01567 820 277 / 386
0845 5551105

Gas Safe and SNIPPEF registered



SNIPPEF

Sue Hoare's Personal Home Care

care offered within the comfort of your own home

Retired physiotherapist offers short term live-in
companionship/respite care within 25 miles of Aberfeldy
available for hours, nights &/or days

Call Sue on 01887 830685 or email suehoare@btinternet.com

Rob Roy HOMES

Specialists in the supply,
design and manufacture of
timber frame homes and
commercial buildings

Rob Roy Homes Comrie Perthshire

Tel: (01764) 670424

Fax: (01764) 670419

Email:

mail@robroyhomes.co.uk

Domestic Section

Hanging Baskets

- 1 Mrs M Campbell,
7 Ballechroisk Court
 - 2 Mr & Mrs Hunter, 6 Dochart Road
 - 3 Mr & Mrs Robertson, 8 Gray Street
- Commended: Mr & Mrs Smith
Muilleann Sabh, Main Street

Tubs/Containers

- 1 Mr & Mrs Smith
Muilleann Sabh, Main Street
 - 2 Mr & Mrs McGregor
3 Dochart Road
 - 3 Mrs F Fraser, 9 Ballechroisk
- Commended: Mr & Mrs Graham
3 Stewart Road

Window Boxes

- 1 Mr & Mrs Twigg
Craigdarroch, Main Street
- 2 Falls of Dochart Cottage,
Gray Street
- 3 L. Brown & D Petrie
1 Lyon Road

Commended: Mr & Mrs Chisholm
Kilvaxter Cottage, Manse Road

Overall Display in Containers

- 1 Mr & Mrs Hunter, 6 Dochart Road
 - 2 Mr & Mrs Smith
Muilleann Sabh, Main Street
 - 3 Mr & Mrs MacGregor
Tigh Breagna, Craignavie Road
- Jointly Commended:
Mrs Guild & John, 5 Monemore
Mr Buglass, 6 Monemore

Garden with Most Year-Round Interest

- 1 Mr & Mrs Huntley
Rowanbank, Dochart Road
 - 2 Mrs M MacNee,
Burnbank, Main Street
 - 3 Mrs A Weaver
Croftcroy, Manse Road
- Commended: M Lincoln & L Stevens
Tigh na Croft, Manse Road

Commercial Section Accommodation Provider

- 1 Invertay Guest House
 - 2 Killin Hotel
 - 3 Dall Lodge
- Commended: Coach House Hotel

Restaurant & Retail

- 1 Shutters Restaurant
 - 2 The Gallery
 - 3 Falls of Dochart Retirement Home
- Commended: The Smiddy



Rowanbank



Craigdarroch



Muilleann Sabh

ANDREW ANDERSON & SONS FUNERAL DIRECTORS

24 Hour Service



Prepaid Funeral
Plans



Monumental Service

Family Run Business

Address: 14 Camp Place, Callander

Telephone: (01877) 330398 / 330567 Fax: (01877) 331079

Rest Room Address: Glenartney Street, Callander

ABERFELDY OPTICIANS

BUY TWO PAIRS OF SPECTACLES AND GET
30% OFF THE LEAST EXPENSIVE PAIR

Offer applies when second pair is purchased within six months

Please phone for an appointment and further details

ABERFELDY OPTICIANS (01887) 829756

QUALITY AND VALUE FROM YOUR LOCAL
OPTICIAN

Monday - Friday 9am - 5.30pm, Saturday 9am-12.30pm
Closed for lunch 12.30pm - 1.30pm

11 Bank Street
Aberfeldy

Mrs B. A. Redden
B. Optom.

PH15 2BB
Tel/ Fax 01887 829756

Awards



Invertay



6 Dochart Road



Shutters Restaurant



7 Ballechroisk Court

A & B Services (Scotland)

Main Street, Killin, Perthshire FK21 8UW



Husqvarna



We can supply ALL your garden needs

- Chainsaws • Lawn Mowers • Strimmers • Ride-ons •
- Bars • Chains • Safety Clothing • Boots • Overalls • Oils

NOW THAT THE GRASS CUTTING SEASON IS OVER BOOK YOUR WINTER SERVICE
Call to arrange FREE collection

- Repairs to Forestry, Agricultural and Plant Machinery
- Steel Fabrication - Gates, Railings, Cattle Grids
- Hydraulic Hose Service • Diesel Tanks • Site Safes



Visit our website - www.abs-scotland.co.uk

Email - info@abs-scotland.co.uk

The Future for Public Toilets?

Stirling Council is asking businesses and communities to be part of a new public toilet initiative called Comfort Partnership Scheme (CPS).

Following a review of the Council's current toilet facilities this year, the Council agreed in June to seek to introduce the Comfort Partnership Scheme to replace some of the existing public toilets and consult with communities on local keyholding where there is a desire to extend the opening hours of Council run toilets. The CPS would involve partnerships with local hotels, pubs, other private businesses and public buildings, prepared to make their facilities freely available for use by the public regardless of whether or not they are customers. In return the business would receive an annual payment from the Council depending on the standard of facility provided, free advertising on the Council website and new signage.

A number of local authorities already successfully operate this scheme including Perth and Kinross, Fife, Highland and many others in England. Many of the council's public toilets are no longer fit for purpose and it is necessary to find alternative ways to provide this important service. With the current financial position the

standard of toilets in all locations cannot be improved or sustained but adequate public toilet provision is required and the Comfort Partnership Scheme will provide this. Stirling Council wants to encourage local businesses and communities to find out more about the scheme, get involved and work with them to ensure the best possible outcome for visitors and local residents.

Council Officers will consult on the scheme during Community Council meetings in Balfron, Blanehead, Buchlyvie, Balmaha, Callander, Crianlarich & Tyndrum, Doune, Drymen, Dunblane, Killearn, Killin, Kippen, Lochearnhead, Thornhill, with keyholding possibilities being discussed in Bridge of Allan, Causewayhead, Kings Park and Kinlochard.

Further information on the Comfort Partnership Scheme is available on the Council website at:

www.stirling.gov.com/for

Ian Anderson

Council's Strategic Corporate Asset Management Service

01786 442809

andersoni@stirling.gov.uk

Where Are They Now?



Marion Jane Macdonald, who was 80 in July, lived in Crianlarich from 1960 to 1978. During her time there, in response to the many improvements such as the new school in the village, she opened the Macdonald tearoom at the Crianlarich train station. In her spare time she taught people how to machine knit.

She left Crianlarich and moved to Dunbeg and then to Oban, where she worked as the manager of the local Oxfam shop. In 2003 she moved to Alford, Aberdeenshire to be closer to her family.

Marion would like to thank everyone who kindly sponsored her eldest daughter, Kyreen Neilson, and the Macdonald family in Killin, Callander and the Coalsnaughton area, in all their efforts to raise money for the Shockwave Endowment Fund for the Aberdeen Royal Infirmary. For information and pictures log on to www.big80challenge.co.uk

Kyreen Neilson

Plants for the garden *Gatehouse Nursery*

Autumn Bedding Plants
and Spring Flowering Bulbs
New Stock of Trees and Shrubs
Full Stock of Garden Hand Tools

Gatehouse Nursery is situated 2 miles south of Aberfeldy
on the Crieff road (A826) Tel : 01887 820472

We Now Sell and Exchange National Garden Gift Vouchers

Reid Tree & Garden Services

- ~ Tree felling, shaping & trimming
- ~ All other landscaping services available
- ~ Mono blocking, Patios & Paths laid
- ~ Pathways & drives gravelled
- ~ Slabbing and walls repaired or replaced
- ~ Fencing & Turfing
- ~ All types and sizes of trees supplied and planted - from 1m to 10m

For free estimates and advice telephone Mr Reid:

0800 0432375 / 07979 634002



S. FORSTER ELECTRICAL

FOR
ALL YOUR ELECTRICAL NEEDS

REWIRES
SECURITY LIGHTING
SHOWERS
SOCKETS
INTRUDER & FIRE ALARMS
DIGITAL T.V.
FREESAT
P.A.T. TESTING
ELECTRICAL CERTIFICATION

Call

Stuart on

01567 820031

or **SELECT**

07855496961

Stuartfuzzy@btinternet.com





The Killin Angling Club Dinner Dance

The Killin Angling Club Committee is pleased to announce that the Club will be holding the dinner dance again this year. It is open to all and provides an excellent evening in the McLaren Hall with a four-course formal dinner followed by a ceilidh dance with music provided by the inimitable Fergie MacDonald Ceilidh Band that has worked so well in previous years.

**Saturday 13th November 2010
McLaren Hall, Killin**

Fergie MacDonald Ceilidh Band

A formal dress dinner followed by a ceilidh dance (open to those who simply wish to come along for a bit of exercise and a few drams)

6:30-7:00pm Pre-dinner welcome
7:00-9:15pm Formal dinner
9:15-9:30pm Presentation of KBAC competition trophies
9:30pm-1:00 Ceilidh dance
The full Dinner & Dance - £25
Dance Only (Pre-booked) - £7.50
Dance Only (Door charge) - £10.00

IMPORTANT: All are welcome, irrespective of whether they are or are not club members. As the event has proved extremely popular in the past two years and in order to ensure that you get a seat, early booking of tickets is recommended!

Anyone wishing to obtain tickets or further information should contact Gerry McCarron
Rowancroft, Main St, Killin FK21 8UT
Tel: 01567 820833
gerrymccarron@tiscali.co.uk

Killin Breadalbane Angling Club

Stitt Brothers



Building
Contractors
Painters and
Decorators
Established 1952

Station Road,
Killin, FK21 8UH
Telephone: (01567) 820344
Fax: (01567) 820944

Letters

Care in the Home

I would like to say thanks to Mandy and all the staff at Falls of Dochart Home for their care and attention to Sue, which went far beyond the call of duty. Also thanks to Dr. deLaat for her undivided attention to Sue.

Carol MacKechnie

(An Obituary for Sue Whitehead will appear in issue 119)

Happy Fortieth

I would like to say thank-you to our son-in-law Andrew Cousins who organised the most amazing party for our daughter Kate's 40th. He did everything from sorting out accommodation, to decorations and also the most fantastic band.

It was great to have both families there and for us to see all our old friends. The icing on the cake was young Adam winning Killin Junior golf championship. A fantastic week-end Andy so well done.

Catherine & Adam Cunningham
(formerly Tyndrum Taxis)

Surprise Eighteenth

I would just like to give a big thank you to everyone who came to my surprise 18th party (and well done for keeping it quiet for so long). It was such an amazing night and I hope everyone enjoyed it. Also thanks to everyone for all the lovely gifts, cards and money. It was very thoughtful. Also a big thank you to my family for organising it and a thank you to everyone who helped set up. Thank you.

Naomi MacLaren

Hospital Stay

I should like to thank all friends and neighbours for the lovely flowers, cards, etc. Also thanks to everyone who wished me well after my stay in hospital. I know that Des appreciated all the good wishes.

Lillian Savage

Obituary

Janet MacDonald
20.2.1947-28.6.2010

Janet was the elder daughter of Mr. & Mrs. Bobby Ferguson, who kept a garage in Main Street Killin. She started at Killin Primary School in 1952 and thereafter attended McLaren High School. Janet was gifted with cooking and sewing skills and proceeded to Queen Margaret's Domestic Science College. On graduating, she worked in York and St. Andrew's University. All through school and village life she and Grant MacDonald were friends and they married in 1973. For a few years Janet accompanied Grant to sea on the oil tankers but in time they moved back to Killin and had three children. In 1982 they moved to Roro Estate in Glen Lyon, where they were both very happy and took a full part in the life of the glen.

Janet is survived by her mother, her husband Grant, daughters Maureen and Christine, son Ian and three grandchildren. She was a very kind, positive and caring person and will be greatly missed by all who knew her.

Catherine MacGregor

NEWS FIRST

Daily Papers, Magazines
Full range of Greeting
Cards, Stationery Items
Fishing Tackle
Scottish Gifts & Jigsaws

Tel: 01567 820362

Eco - Carpet & Upholstery Cleaning Services



Dry Cleaning
for Carpets.
No Water
No Drying Time
Allergy or Dust mite Problems?
Solved With Powerful Ultraviolet
Mattress Cleaning
Call now for details:
07827 014328
info@ecocarpetcleaning.net

Hairdressing at Home

Reasonable Rates
Every Monday and Thursday

Phone Bruce
01877 331212

Local Planning Applications

National Park

Week 31 commencing 26 July

Proposal: Erection of dwellinghouse
Location: Land rear of Strathfillan Terrace Station Road, Crianlarich
Applicant: Mr Matthew Sanger
Application Type: Detailed Planning Permission

Decision: Approve with Conditions

Week 33 commencing 9 August

Proposal: Erection of agricultural worker's/retired farmers dwellinghouse and erection of 2 No. agricultural barns
Location: Land at Acharn, Killin
Applicant: Mr Malcolm Campbell
Application Type: Matters Specified in Conditions

Decision: Withdrawn

Week 34 commencing 16 August

Proposal: Erection of extension to existing garage
Location: The Garage Main Street Killin
Applicant: Mr Peter Farquharson
Application Type: Detailed Planning Permission

Proposal: Erection of agricultural worker's/retired farmers dwellinghouse and erection of two agricultural barns
Location: Land at Acharn near Killin adjacent to Killin Community Curling Pond

Applicant: Mr Malcolm Campbell
Application Type: Detailed Planning Permission

Decision: Approve with Conditions
Proposal: Development of an underground mine to extract gold and silver including service, production and storage buildings, tailings management facility (TMF), access road, car parking, bridge and other associated infrastructure (revised scheme - previous application 90/01102/DET/S)
Location: Minerals Cononish Road Tyndrum

Applicant: Scotgold Resources Ltd
Application Type: Minerals Planning Permission
Decision: Refuse

Week 35 commencing 23 August

Proposal: Change of use of land to site 6no. static caravans, nos 9 & 11-15 (Retrospective)
Location: Glen Dochart Caravan Park Crianlarich

Applicant: Mr Robert McCready
Application Type: Detailed Planning Permission

Decision: Approve with Conditions
Proposal: Erection of single storey garage extension to dwellinghouse
Location: Fiarach Crianlarich
Applicant: Mr Edward Robertson
Application Type: Householder Planning Permission

Week 37 commencing 6 September

Proposal: Erection of extension to dwellinghouse
Location: Ewich House Crianlarich FK20 8RU

Applicant: Mr Ian Richards
Application Type: Householder Planning Permission

Perth & Kinross

1 September

Proposal: Alterations and Formation of flat roofed dormer
Location: Greenacres, Killin
Applicant: Mr Colin Hales
Application Type: Planning permission local

Decision: Pending Consideration

Stirling - Nothing to Report

Callander

The Callander Film Society has been running for more than 30 years. Membership is £25 which, for our 17 movies, works out at less than £1.50 per film. Visitors and non-members are welcome for £4 at the door.

The Contemporary Programme at 7.30pm on Saturdays at the Rob Roy Centre kicks off with Kathryn Bigelow's "The Hurt Locker", an action filled war epic set in Iraq, which won six Oscars, including best film. Other autumn films are "Micmacs", a unique French satire on the arms trade; "An Education" (sponsored by Mhor Fish & Mhor Bread), a coming-of-age story about a teenage girl in 1960s suburban London; and "The White Ribbon", a German film nominated for two Oscars, set in a WW1 village where the children are being bullied by the local pastor, doctor and baron. Our pre-Christmas film is "Sherlock Holmes", directed by Guy Ritchie and starring Robert Downey Jnr and Jude Law.

The New Year starts with "Julie and Julia", with Meryl Streep, which intertwines the story of Julia Child's start in the cooking profession with blogger Julie Powell's challenge to cook all the recipes in Child's book. In February "The Ghost", sponsored by Lady Kenmore's Antiques Curios

BL DECORATORS

6 LYON COTTAGES, KILLIN FK21 8TG

TOP QUALITY AMES TAPING, COVING AND CORNICE WORK
SPECIALISTS IN ALL ASPECTS OF PAINTING, DECORATING,
PAPER HANGING AND SPECIALISED WALL FINISHES

DOMESTIC AND COMMERCIAL

FOR A FREE ESTIMATE AND ADVICE PHONE BOBBY ON

Tel: 01567-820854 Mobile: 07887 643831

www.bldecorators.co.uk

Window Cleaning



Simon Raw
Licensed
Commercial
&
Residential
Window
Cleaner

Killin 0782 464 2344
simon@raw1.wanadoo.co.uk

Grants Laundry

Main Street Killin

Tel: (01567) 820235 &
820744

Here for ALL your
Laundry Needs

Laundry Hours :
Monday to Friday
9am to 5pm
Saturday 9am till 12 noon

K illin K utz

Ladies stylist
and gentleman's barber.
Creative styling
L'Oreal colour specialist
Free consultation

Main Street, Killin

Tel: 820920

Film Society

and Collectables, is based on the Robert Harris bestseller about a writer charged with completing the memoirs of a former Prime Minister. It is followed by "The Last Station", a historical drama about Leo Tolstoy and "Invictus" the story of how Nelson Mandela enlists the national rugby team to unite apartheid-divided South Africa. The season ends with "Secrets in Their Eyes", the Argentinian winner of the Oscar for the best foreign film. The contemporary films are shown on our own Blu-Ray DVD player, a digital cinema projector with a high quality image on the Rob Roy big screen and a digital surround sound with six speakers. The Classic Programme is on Fridays in The Waverley Hotel. All feature a 16mm cartoon or a short movie as well as the main feature. This year we have a 1953 Scottish comedy, "Laxdale Hall", filmed in Wester Ross, followed by a Disney fantasy, "Darby O'Gill and the Little People". A courtroom classic, "12 Angry Men", a Busby Berkeley musical, "For Me and My Gal" and a Carole Reed 1947 suspense thriller, "Odd Man Out", complete the programme. Our classic system is a 16mm projector, usually with a two-reel film (classic film society format). We are grateful for continued support from Stirling & District Arts Forum and the British Federation of Film Societies. And we couldn't operate without the ever helpful staff of the Rob Roy and The Waverley Hotel. For more information contact

Eammon O'Boyle

Chairman

01877 330519

poboyle1@btopenworld.com

Killin Heritage Society Programme

McLaren Hall 7.30pm

5th November "The Tay Western Catchment Project." Victor Clements

3rd December "A House with a Past" Dr Burce Durie,

4th February AGM "Recollections of a life in Killin" Roy MacGregor

4th March "Flanders Moss History and Natural History" David Pickett

1st April "Bridging Perthshire's Past" Lindsay Farquharson

 **Killin and Ardeonaig Trust**

[KILLIN CUTTING CARBON]

We now have the results of the Stirling Home Insulation Survey and the names and addresses of those of you who requested information on renewable energy. We will contact you over the next few weeks to see if we can help you. Make a note of what you would like to find out about and we will do our best to provide the answers. We have also been working with clients in the village to obtain grants through the Energy Assistance Package Stage 4 (Stage 3 qualifies you for free loft insulation etc) to help offset the costs of installing a new central heating system, a new boiler, draught proofing etc. To qualify for this measure you have to be a homeowner or private tenant, be over 75, or have a disabled child under 16 and receive qualifying benefits, or pregnant and receive qualifying benefits, or be over 60 and receive qualifying benefits. If you think you may qualify and need to improve your heating, please get in touch with us at KCC.

Northern Energy Development

Limited, are proposing to build a Wood Fired Combined Heat Plant at Acharn, outside Killin. Fergus Tickell, Managing Director, attended our renewables event at the McLaren Hall on 4th September and answered a number of questions from local people. Planning will be submitted this autumn so now is the time to decide how you feel about or wish to respond to the proposal. Do you think it will bring benefit to Killin and to local employment? Do you have any concerns and do you think it is what the area needs? Fergus Tickell is happy to discuss this with you. His email address is Fergus@energydevelopments.co.uk

Reed Construction
All your building needs in one company
New Build / Extensions
Timber Frames / Roofing
Taping / Tiling
UPVC Windows / Doors
Painting / Decorating
Joinery and Brickwork
Tel Dalmally 01838 200503
Mobile 07917 665103



Interesting Renewables

Urine can be used as renewable energy source - Research at Heriot-Watt University
<http://www.bbc.co.uk/news/uk-scotland-edinburgh-east-fife-11023725>
Whisky 'petrol' for cars developed by university - Research at Edinburgh Napier University
<http://www.bbc.co.uk/news/uk-scotland-edinburgh-east-fife-10998281>
From the Killin website KWS search YouTube.com with the following words to see historical film of Killin railway and the building of the Giorra Hydro Dam near Ben Lavers
"British Transport Film 1959 ERF Foden Morris Leyland BRS"
KCC Office open: 11:00 - 17:00 each Thursday & Friday in the Sports and Leisure Centre
cuttingcarbon@killincdt.co.uk
Phone/Voice mail: 01567 820 937
Skype: killin Cuttingcarbon
<http://www.killincdt.co.uk/kcc/index.html>

Bernard Mallett-Griffiths

KAT Thrift Shop

During six weeks over July and August this summer, KAT ran a Thrift Shop in the Church Hall for three and a half days each week. It was staffed by volunteers who sorted and sold donations from people in the village and proved very successful. Over £1600 was raised which KAT will hold in readiness for village projects as needed. KAT would like to thank the eighteen volunteers and all who donated goods. The plan is to run something similar again next year, although where and when have not yet been decided.

MM

Jane Watts
Popular local violin and piano teacher has a few vacancies
Please ring
0776 6566935
01567 820141



Celebrations



Ben, born 10th June to Jenny Lambert and Andy Sutherland in Bathampton. A grandson for Liz Howard



Natasha Teresa Hamilton born on 17th June, a first baby for Michael and Stephanie



Laura-Anne Mitchell graduated with a BA Honours degree in Politics and History from the School of Law and Social Sciences at Glasgow Caledonian University. Her Mum and Adam are so proud of her and thank Jon and wine - without these Laura would have found the last four years so much more difficult.



Liz Lambert and David Howard married at Mount Lavinia Hotel in Sri Lanka on 16th July

Apology

On our Celebrations page in Issue 117 we named Cameron Taylor's bride Elizabeth and this should have been Elaine. We apologise for this mistake.

Marieke McBean Photography

North Steading,
Tombreck,
Lawers

Weddings
Events
Photobooks
and more

Visit the new website:
www.marieke.co.uk
info@marieke.co.uk
t. 07762 689612

A small photograph of a bride and groom in wedding attire, standing outdoors.

STIRLING ENTERPRISE
Business Gateway

KILLIN
We're with you every

STEP
of the way

Tel: 01796 463416
step@stirling-enterprise.co.uk
www.stirling-enterprise.co.uk

- **Start-up Advice**
- **Business Training**
- **IT Guidance**
- **Business Support**
- **Property - Offices/units for rental**

LearnDirect
SCOTLAND FOR BUSINESS

Landscape changes at Ben Lawers



programme of guided walks and educational work.

The favoured option from the review at Ben Lawers includes re-locating the car park, which the Trust inherited

Plans to create new visitor facilities at the National Trust for Scotland's Ben Lawers National Nature Reserve started in September with the removal of the old Mountain Visitor Centre. The Centre had been closed since 2009 when the charity faced financial difficulties. At this time it was agreed, in the light of recommendations from a Feasibility Study that the Centre should be replaced by a less obtrusive, unmanned facility, that further capital outlay on urgent repairs and upgrades required to meet statutory obligations was inappropriate. Instead the Trust has chosen to focus on the other key aspects of management of the Reserve, including pioneering work to restore threatened plant communities, footpath work and an annual

as a relic of the hydro-electric developments, to a less visible site nearby within a woodland setting. Initial plans for this are well advanced but will be subject to the approval of the local planning authority and funding. The site of the current car park will be restored to moorland and two new sections of path will be constructed to link the site to the main Ben Lawers and Tarmachan paths. There is already a pedestrian route through young native woodland to the main road along Loch Tay. New outdoor interpretation will be available to all visitors all year round. The Trust will continue to encourage visitors to contribute to the ongoing Reserve management and conservation costs by purchasing parking tickets. Current plans do not include the

provision of toilets which were formally an integral part of the Visitor Centre and as such only available during opening hours between Easter and September. Although the Trust is aware that visitors would like loos on site, finding a practical way of maintaining operational toilets all year at 430m altitude is a problem. It would also add considerably to the operating costs of the Reserve and divert limited funds from vital conservation work on the hill. We hope this will provide visitors with an added incentive to stop within the local communities and support local businesses on route to the hills.

Helen Cole

Manager Ben Lawers NNR

CARS Scheme for Killin

Funding is still available for the repair and restoration of historic buildings in the Killin Conservation Area.

The Killin Conservation Area Regeneration Scheme (CARS) is funded by Loch Lomond and The Trossachs National Park Authority and Historic Scotland until March 2012 and covers the following:

General repair of historic buildings

Grants are available for up to a maximum of 70% of the cost of eligible works including: structural repairs, re-roofing, chimney repairs, repair/renewal of lead work & guttering, repairs to stonework and render, repairs to windows, doors & external joinery, boundary walls and railings.

Reinstatement of architectural detail

Grants are available for up to 85% of the cost of eligible works including reinstatement of: traditional sash and case windows, traditional doors, decorative iron work e.g.: finials & railings.

Works not qualifying for grants

Routine maintenance and redecoration, conversions or alterations, interior fitting out or renewal of services.

If you would like more information about the funding contact National Park Officers Susan McGowan or Kirsty Callaghan on 01389 722600 or visit the National Park website <http://www.lochlomond-trossachs.org/looking-after>

24/7 CARS

CRIANLARICH / TYNDRUM TAXIS AND MINI BUS HIRE

**For information and or bookings
please contact Ian or Caroline on :-**

TELE / FAX 01838 300307

info@247taxis.co.uk

www.247taxis.co.uk

What's on Offer at Killin Library

DVDs

Hire 3 DVDs for the price of 2
2 day hire and Weekend 3 day hire

Children's weekly

Internet Access Free

COLOUR PHOTOCOPIER

Opening Hours:

Mon. : 10 - 1 & 2 - 5 ; Tue. & Fri: 10 - 1 & 3 - 7; Wed: 2 - 5; Thur: 10 - 4

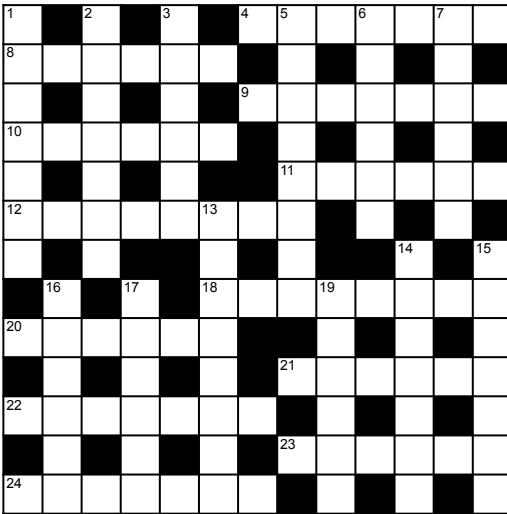
Flexible learning - including computing - Thur. afternoon

Tel: 01567 820 571

E-Mail: killinlibrary@stirling.gov.uk



Crossword by Scorpio



Across

- 4 Halcyon days for Tom Dick and Harry? (7)
 8 A person who brings bad luck (6)
 9 Concerning nastiness - have a break (7)
 10 Where in France one would expect to see a good movie (6)
 11 Sounds a good looking two wheeled carriage (6)
 12 Surrounded in sealable compartment? (8)
 18 Shaken, crude gin will be getting smaller (8)
 20 Declare in total leg effort (6)
 21 Chap, possibly Spanish, joined for place of worship (6)
 22 Iron pot stirred to produce a set quantity (7)
 23 Although it be all minus fifty agitated (6)
 24 One abstainer finishes and keeps appointment (7)

Solution 117

- Across** 4 iceberg 8 ignore 9 biltong 10 kruger 11 bridge
 12 tincture 18 discount 20 raceme 21 limpet 22 stomach
 23 abuser 24 frigate
Down 1 tickets 2 ensuing 3 urgent 5 climbers 6 buttin
 7 renege 13 undercut 14 bus pass 15 stature 16 falter
 17 tea mug 19 climbs

Down

- 1 Coward in the coop (7)
 2 Connie enveloped five causing her to conspire (7)
 3 Perform to a fairly high standard (2,4)
 5 High up where one might put a scarf! (8)
 6 Expecting, trusting and relying (6)
 7 Remove the short street from spittoon and agitate for choice (6)

- 13 Once or little medic rattled for keeping in file (2,6)
 14 Overweight drop outs (7)
 15 Flexibility and spriteliness (7)
 16 Not a single soul left in (3,3)
 17 This crusher needs a small bowl to crush in (6)
 19 Legally supported (6)

GAULDS FUNERAL DIRECTORS
 Independent Family Business
 Helping bereaved families for over
20 years.
 Pre paid funeral plans in association with Golden Charter.
Crieff 01764 656567. Aberfeldy 01887 820436
 Addition Terrace, Crieff. PH17 3AT. 28 Black Street, Aberfeldy. PH15 2BB
www.gaulds.com
Strowan Woodland Cemetery
 The only Greenfield Cemetery in Perthshire for more information
 phone 01764 656567
 Web site:- www.strowanwoodlandcemetery.info

John Morris Safety Ltd
 John Morris
 (Institution of Occupational Health & Safety Officers)
 Chartered Health and Safety Practitioner
 1-day REHIS Health & Safety Certificate - £90 per person
 1-day REHIS Food Hygiene Certificate - £90 per person
 1-day HSE Emergency First Aid at Work Course - £90 per person
 3-day HSE First Aid at Work Course - £290 per person
 Sources of Competent Safety Advice, Fire Safety Training
 First Aid Training, Manual Handling Training
 Risk Assessments, Safety Inspections or Audits.
 "Helping you to meet your legal requirements"
 If you would like more information, please contact
 Craignave Farmhouse, KILLIN, Perthshire, FK21 8SJ
 Tel: 01753 627717 Mobile: 07865 514022 e-mail: john.morris@jmsgl.co.uk

Julie Baird Pilates

Pilates is a corrective form of exercise, targeting the deep postural muscles that support the spine and lower back, building strength from the inside out. It aims to achieve a balance between strength and flexibility and plays a key role in injury rehabilitation and prevention.

Pilates Mat Classes, 1 to 1 or Group Home Visits:
Killin, Fortingall, Pitlochry and area.

Classes

Tuesday mornings - Pitlochry
 Wednesday afternoon - Fortingall
 Wednesday evening - Killin

For details of class times and prices

Tel: Julie **07963 088 112** (Body Control Pilates Instructor)



Back Pain & Physiotherapy Clinic Comrie

For the treatment of Back Pain, Neck & Shoulder Pain, Sports Injuries

TREVOR A GRIFFITHS

MCSP LCSP (Phys) BTAA

Chartered Physiotherapist
 Registered Bowen Therapist & Instructor

47 Tay Avenue, Comrie, PH6 2PF
 tel: 01764 670567
 mobile: 0788 759 7455
 email: bowen@perthpoint.com

What's On in Killin and District

October

- 6 WRI meetin McLaren Hall 7.30pm
 15 Flu Clinic McLaren Hall Killin 10am page 19
 20 Cafe Sci meeting Tyndrum Village Hall 7pm page 13
 20 Herb Society meeting Aberfeldy Town Hall 7.30pm page 27
 21 Church Guild meeting Jamie Stewart author of The Scottish Bible Community Rooms 2pm
 22 Flu Clinic Crianlarich Village Hall 10am page 19
 22 Ogham Concert McLaren Hall
 30 Trivial Pursuits Night McLaren Hall 7pm

Tuesday Club
Church Hall 2pm

Guild Craft Group
Tuesdays
Littlecroft 2pm

Quilting Group
Wednesdays
Church Hall 2pm

Community Choir
Church Hall
Tuesdays 7.30pm

Ballroom Dancing
Lochearnhead Village Hall
Fridays 7.30pm

Carpet Bowls
Mondays
Lesser Hall
7.30pm

November

- 5 Heritage meeting Lesser Hall 7.30pm page 35
 6 Soup & Sandwich lunch McLaren Hall 12 noon page 26
 6 Whist Drive Lesser Hall
 9 Killin Community Council meeting Killin School 7.30pm
 10 Cafe Sci meeting Tyndrum Village Hall 7pm page 13
 13 Angling Club Dinner Dance McLaren Hall 6.30pm page 33
 17 Herb Society meeting Aberfeldy Town Hall 7.30pm page 27
 29 Fire & Ice Festival Scottish Crannog Centre Kenmore page 19

Badminton
Mondays
McLaren Hall
6.30pm

Tiddlers & Toddlers
Church Hall
1st Thursday of the month
10am page 19

Pilates Class
Wednesdays
Lesser Hall 6.30pm

Youth Club
Thursdays
Crianlarich Hall
Juniors 6.30pm
Seniors 8pm
starts 21st Oct

Badminton
Mondays
Crianlarich Hall
evenings

BVLC
Library
Thursdays 10am-5pm

Keep Fit
Wednesdays
Lesser Hall 5.30-9.30pm

Learning Cafe
Tuesdays & Fridays
Tyndrum Hall 11am-4pm
page 9

Ads Index

24/7 cars	37	Grant and Welsh	39	Shutters Restaurant	3
A& B Services	31	Grant, Charles	10	Singing Lessons	39
Aberfeldy Opticians	30	Grants Laundry	34	STEP	36
Ally Baird Ltd	6	Green Welly Stop	12	Stitt Bros	33
Andrew Anderson & Sons	30	Hairdressing at Home	33	Studio, The	22
Back Pain Clinic	38	Heart to Heart	23	Sue Hoare Personal Care	29
Barhaul	9	Horsley, Kevin	14	Traditional Signwork	27
BL Decorators	34	Houseproud	26	Trust Housing Association	25
Boat House Restaurant	19	Jasmine Beauty	2	Watts, Jane	35
Bridge End Mill	11	John Morris Safety	38	Window Cleaning	34
Bridge of Lochay Hotel	16	Julie Baird Pilates	38	Your Computer Manager	15
Campbell, Jason	26	Killin Hotel	4		
Capercaillie	24	Killin Kutz	34		
Care Dental	9	Killin Library	37		
Castle Menzies	5	Killin Outboard Motor Services	6		
Central Scotland Rape Crisis	23	Lix Toll Garage	40		
Clachan Cottage Hotel	17	Loch Tay Pottery	21		
Coach House Hotel	27	Macfarlane Gray	24		
Crianlarich Store	11	Mains of Taymouth	28		
Cruachan Restaurant	13	McAllister, Eric	39		
Dave Hunt Photographer	23	McBean, Marieke	36		
Disco Hire	10	News First	33		
Douglas McRobbie Electrical	2	Old Flax Mill	13		
Eco Carpet Cleaning	3	Old Smiddy, The	18		
EMB Graphics	20	PFK Performance	21		
Everest	11	Physiotherapist	10		
Fabric Studio	8	Post Office	4		
Firewood for Sale	18	Reed Construction	35		
Fraser, A.C.	29	Reid Tree & Garden Services	32		
Gatehouse Nursery	32	Rob Roy Homes	29		
Gauld, Maureen	2	RTA Plant Hire	20		
Gaulds Funeral Directors	38	Rural Stirling Housing	22		
Gourlay Butchers	17	S. Forster Electrical	32		
		Scottish National Party	3		

Which bin which week?

Week beginning
 4 Oct Brown
 11 Oct Grey/Green
 18 Oct Brown
 25 Oct Grey Green
 1 Nov Brown
 8 Nov Grey/Green
 15 Nov Brown
 22 Nov Grey/Green
 29 Nov Brown

ERIC McALLISTER CARPET FITTER

"Tredaire"

Tel; Killin 01567 820359

**SPECIALIST ON ALL
FLOOR COVERINGS**

**Supplier of
Carpets & Vinyls**

Learn To Sing



Why not contact
Franny Morrison

An experienced, professional
singer and teacher.

All ages welcome

01567 829048

0780 2929796



GRANT AND WELSH

(Sole proprietor: A Grant)

**Painter & Decorators
Ames Taping**

Greenbank, Main Street, Killin

Tel: (Killin 01567) 820462



Tel: 01567 820 280

Fax: 01567 820 763

E-Mail: sales@lixtoll.com

info@lixtoll.com

Website: www.lixtoll.com

Service

Service for all makes. Local customers vehicles collected and delivered free.



Parts

A wide range of tyres, parts and accessories are available from our parts department.




MOT
 Testing Station

Hire

4x4, car, van and trailer hire all available for long or short term.

Sales

Over 40 Land Rover Defenders for sale covering the full model range.

Recovery

24 hr breakdown/recovery. Contractors for police and all breakdown clubs.



Lix Toll Garage, Lix Toll, Killin, Perthshire, FK21 8RB.