

# KILLIN NEWS

KILLIN & DISTRICT COMMUNITY NEWSPAPER

December/January 2015

**Issue 149**

Price £1



**Happy Christmas and New Year to all our readers**



## DEADLINES

**Issue 150**  
**Advertising**  
**8th January**  
**Copy**  
**15th January**  
**Publication 5th February**

### Editorial Policy Statement

The Killin News is a free community newspaper produced and distributed every two months by volunteers to households and businesses in Killin and district. The aim of those involved is to produce an informative, accurate and entertaining journal for those who live, work and visit in this area. Letters and articles published in the newspaper do not necessarily reflect the views of the Production Committee and they reserve the right to shorten, edit or not publish any item. Contributions will be attributed to the author. Vested interests will be declared where applicable. Articles should be between 200 and 300 words, photos in high quality and the content should be original work relevant to Killin and environs. All personal emails are acknowledged by a reply. If you do not receive a reply please contact us by phone or drop the article in the office letterbox.

#### Production Committee

Judy Forster, Sylvana Ginella, Dani Grant, Liz Howard  
Susan Howard, Angus Inglis,  
Margaret MacIver, Anneke Mayo, Kay Riddell,  
Marion Strang

#### Photographer Ron Allner

#### Delivery Volunteers

Jim Beattie, Lynne Ferguson, Linda Frost, Elizabeth  
Hancock, Shannon Ireland, Marion MacGregor,  
John and Jennifer Morris, Julie Rhys  
Janet Somerville, Gordon Webster  
Mary Anderson, Margaretanne Browne  
Theresa Elliot (and James), Jillian Laurence  
Catherine Macmillan, Rosie Mochan, John Riley  
Jen Riley, Moira Robertson, Isla Craig, the family at  
Rubble Cottage + some committee members

**To advertise in the Killin News**  
**Advertising Rates from £12**  
**Contact Tel: 01567 820298**

Adverts are accepted in good faith and we cannot be held responsible for the goods and services advertised

**Web sites:** [www.killin.info](http://www.killin.info) and  
[www.killinnews.co.uk](http://www.killinnews.co.uk)

**e-mail:** [killin.news\[at\]madasafish.com](mailto:killin.news[at]madasafish.com)  
[editorial\[at\]killinnews.co.uk](mailto:editorial[at]killinnews.co.uk)  
[adverts\[at\]killinnews.co.uk](mailto:adverts[at]killinnews.co.uk)

**Address: Main Street, Killin FK21 8UW**  
**Office Phone : 01567 820014**

**pdf versions of the paper can be viewed on the**  
**Killin News website**

### Editorial

This year's Remembrance Day was marked by much less publicity than last year's 100th Anniversary of World War I. Everyone then must have been aware of the wonderful display of ceramic poppies at the Tower of London and many were prompted to look into their family history to find details of family members involved in that War. Interest in family history generally is increasing and the recently released 1939 Register is particularly important to researchers as no censuses exist between 1921 and 1951. Old family papers, letters and photos are vital clues to the lives of even our recent ancestors but how often do we hear someone regretting that such things had been simply thrown away when a relative died.

Village history, too, can be lost this way. There are still families in Killin who have been here for generations and have papers and artefacts from way back but what can they do with them? Often younger generations have moved away or as yet have no interest in such things and modern dwellings do not have unlimited space for leaving boxes in attics or outhouses. Killin Heritage does its best to hold on to things but there is no place to keep them which is readily available to anyone wanting to look at them. The ideal would be to have a small museum but this doesn't seem viable. As time goes on more and more of Killin's history risks being lost.

Part of the village's recent history is the Killin Folk Festival which was discontinued some years ago. It's good to learn that a younger generation is now planning a Killin Music Festival starting next year. Something to look forward to.

Meanwhile the Killin News team wishes you all a Happy Christmas and New Year.

#### **Would you like to join the KILLIN NEWS Mailing List or send copies to your friends?**

If so please please send your details to us.  
(See left)

Annual cost: UK £15: Outside UK £35  
Please make cheques payable to Killin News

#### **Your copy of Killin News**

Just a reminder that copies of Killin News are delivered free to most households but anyone outside normal delivery routes who does not receive a copy can pick up one from the Library.

Front page picture David Paterson

# Glen Ogle Ultra Marthon

This year saw the fifth consecutive Glen Ogle 33 Race taking place, for the second year running based in Killin. We saw a record number of 334 starters. Runners began the race in Killin before ascending up to Glen Ogle and crossing the famous viaduct on their way down past Lochearnhead towards Balquhider. From here they headed to Strathyre, over to the forest road before returning to Killin. The men's race was hotly contested but winner Robert Turner led from the start and set a new course record, taking nearly 10 minutes off the previous best. Robert covered the 32.5 miles in an amazing time of 3hrs & 36 minutes. Coming in second place was Rob Sinclair, running his first ultra marathon and doing it in a time which was only a minute slower



## Index

Angling Club	37
Apology	15
Ben More Glass Slide	25
Big Learner Relay	34
Book Review	24
Boxing Day Dip	7
Breadalbane Adventures	17
Celebrations	36
Community Partnership	6
Craft Group	33
DRT	13
Editorial	2
Falls of Dochart Home	24
Fire Service Car Wash	34
Frost Report	9
Glen Ogle Ultra	3
Internet Learning Café Tutor	4
KAT	5
Killin & Crianlarich Nursery	28
Killin Community Council	4
Killin Medical Practice	13
Killin SWI	28
Letters	32
Loch Tay Zyder	23
McLaren High School	27
Mervyn's Weather	8
Mobile Libraries	37
Nation Trust Scotland	19
New Park Board Member	19
New Wee Bake Shop	13
Obituaries	30
Once in a Red Moon	21
Planning Applications	38
Recycling centres	39
Remembrance Day	7
Scouts	22
Stirling Low Carbon Future	8
Strathfillan by the Way	10
Strathyre Music Festival	35
Tarmachan Hill Race	20
Taymouth Castle Tours	18
Telephone Book	15
Trust Housing	15
U3A	35
Walk in the Park	26
What's On	39
Which Bin	39
Wigwams	14

than the previous course record, at 3hrs 44 minutes. In third place was James Stewart who finished in 3 hrs 46 minutes. The womens race was a close-run thing with only a couple of minutes separating first and second place. Charlotte Black was the first woman home in 4 hrs 17 minutes. Only two minutes behind her was Jillian Gordon, who took second, with Kristin Lownie in third, finishing in 4 hours 23 minutes. BAM Racing, comprised of Bill Heirs, Mike Adams and his wife Cat Adams, would like to extend a massive thank you to the people of Killin for welcoming us once again to their village. We couldn't ask for a better reception for our runners. We set up base in McLaren Hall for the weekend, a fitting venue for us to hold race registration and the location for a Bake Sale for the runners after the race, which was catered for by the ladies from Cancer Research UK - (Killin Committee (CRUK) This was followed in the evening by a ceilidh for those runners who still had some miles in their legs, again catered for by the CRUK ladies with music being provided by the very excellent Reely Jiggered ceilidh band. During the ceilidh we held a raffle,

and combining this with the sum the ladies took during the bakes sale, plus the ceilidh ticket sales, we are delighted to have raised in the region of £1700 for CRUK Killin. Thank you to every one who contributed towards this great sum of money for a very worthy cause.

BAM would also like to extend special thanks to the local hotels and B&B's who catered for our runners and their early starts on the Saturday morning, to Anthony Dowling for providing us with our off road parking, Elizabeth and Marion from CRUK Killin, plus all the other ladies throughout the course of the day looking after us, Duncan McDonald, our piper Mark Sutherland, Alex and Fiona Stewart for all their help with the hall, Annette McLarty for opening up for us after her season had ended and, first and foremost, all our marshals who joined us to help during the race. We all give up our time for free and we really appreciate our friends, old and new, helping us make our races the success they are.

We are booked in already to come back and do it all again next year and look forward to making Killin our home for the first weekend in November 2016.

## A Magnificent Achievement

When The Cancer Research Committee agreed to do the catering for the Ultra Marathon, they were not expecting the numbers involved. Could they really manage enough for up to 500 people., they wondered. But they decided of course they could - and provided afternoon tea and cakes for 450 and then rolls, sausages and bacon for the 250 people who enjoyed the evening ceilidh. One young Malaysian competitor spoke to one of the committee, saying that he was a survivor of cancer and expressing his personal thanks to them for all their hard work in helping people like him. That alone, even without the magnificent total raised would have been enough reward. Well done, ladies.



# Killin Community Council November Meeting

## Police Service of Scotland

**Community Council Report:** A number of young people have been spoken to about reckless or dangerous stunts on bicycles.

A number of complaints have been made about residents at a house in Fingal Road. The owners and occupiers have been made aware and Police are asking that residents of Fingal Road continue to log any complaints.

A local male has been charged with vandalism after the bus shelter near the Capercaillie was damaged.

Winter safety checks are now being carried out so ensure your vehicle is road worthy.

There have been two serious accidents involving motorcycles at the new Crianlarich bypass.

A 50mph speed limit has now been applied to Glen Ogle.

There has been a spate of thefts in the area and the Police are advising all residents to ensure they take adequate security measures, including locking vehicles.

Smartwater kits are still available for marking valuable items.

A white transit van was seen at 0600 on 31.10.15 driving past Lawers View with no lights on – police are keen to identify the driver.

Local officers are now being allocated Firearm enquiries.

## Traffic speed on Lyon

**Road/Ballechroisk area:** A 20mph speed limit in this area has been agreed in principal by Stirling Council and is now in the work schedule.

The bin lorry has had difficulty accessing Lyon Road due to cars parked there. The Community Council will email George Somerville about this and copy in Martin Earl.

**Dochart Bridge:** Jim McGregor, Traffic Management Team Leader, has been in touch with Tim Frost regarding the road markings and sight line problems. No repairs have been carried out to the bridge.

**KAT:** Kat is working on the 2<sup>nd</sup> phase for the Old Mill with a Feasibility Study starting in the next few weeks. This study will seek the views of local residents.

Sanding should have been carried out in September in the Breadalbane Park but has not yet been done.

**Road Repairs:** The stretch of Ardeonaig Road from the Old Hall to Dall Farm has been completed but ditching is needed at Dall Brae. Martin Earl to pursue this.

The A827 from the Golf Course to the boundary is scheduled for resurfacing but this has been postponed until March. Craignavie Road has been done.

The Community Council will confirm with Jim McGregor that signage improvements, double yellow lines at the Smiddy, the repainting of white lines and cutting back of all vegetation is included in the project proposals for the Dochart Bridge mentioned above.

**Lamp Posts:** The Community Council will contact Nicole Paterson at Stirling Council regarding Christmas lights for the lamp posts.

**Invasive Species:** A team did come out to spray but as it was the wrong time of year, they left without completing the job. Martin Earl to contact Gordon McLaughlin, Stirling Council.

**Litter bins:** Signs have been put on the fence beside the area where the bin next to the railway line was. These state that a bin is available at the toilets.

**DRT:** The cutbacks and central booking continue to lead to problems for people trying to access the service. Martin Earl advised that people make a booking and then amend it if necessary. He also advised the Community Council to encourage people to record their views about DRT. Stirling Council is running a survey about this until the 18<sup>th</sup> of December 2015

**The Killin Folk Festival:** The public meeting was well supported and a Committee is now in place and the Festival is planned for June 2016.

**Community Conversation:** This public meeting will be looking at the proposed Council budgets. Thursday 19<sup>th</sup> November in Lochearnhead Village Hall 7-9pm.

**Scottish Water:** Scottish Water have lowered the water pressure in the village from 6 bars to 3 bars. This has caused considerable problems for the laundry and may affect other businesses such as hotels. Martin Earl will pass on concerns to Bruce Crawford.

**Next meeting:** Tuesday 12<sup>th</sup> January 2016, 19.30 at Killin Primary School

## Internet Learning Cafe Tutor

Killin & Ardeonaig Trust

is offering a contract for

provision of tutoring services in our

Internet Learning Café

based in Killin Library

Hours: 11am to 3pm each Thursday

Requirements for Post

- Knowledge of computers, tablets, smartphones, digital cameras and other devices

- Knowledge of programmes including - word, excel, powerpoint, windows and Mac. Download apps,

- Knowledge of keeping a 'Healthy Computer' – anti-virus, malwares, basic advice on fixing infected computers.

- Ability to communicate well with all ages

- Good teaching and tutoring skills to a range abilities

To tender for post contact Theresa

Elliot on 01567 820628 or

theresa@killincdt.co.uk

## Back Pain & Physiotherapy Clinic Comrie

For the treatment of Back Pain, Neck & Shoulder Pain, Sports Injuries

**TREVOR A GRIFFITHS**

MCSP LCSP (Phys) BTAA

Chartered Physiotherapist  
Registered Bowen Therapist & Instructor

47 Tay Avenue, Comrie, PH6 2PF  
tel: 01764 670567  
mobile: 0788 759 7455  
email: bowen@perthpoint.com



**JASON CAMPBELL**  
Monemore Killin

**Plumbing & Heating  
Bathroom Installations  
Wet Room/Tiling/  
Repairs  
Boilers**

**Call 07772973082**



**Killin Golf Club**

Formed in 1911 - original members: John and Margaret Macdonald  
Golfers: Professionals: 1821 9711  
Amateurs: 1821 9711  
Website: www.killin-golf-club.co.uk  
Email: secretary@killin-golf-club.co.uk

## Club Stewards Required

Applicants are sought for the position of Club stewards for Killin Golf Club.

Although the roles are best suited to a couple, all applicants will be given serious consideration.

For a speedy response please send you email application to:-

secretary@killin-golf-club.co.uk

# **KAT Killin and Ardeonaig Trust**

## **Breadalbane Park**

The sand slitting has not been carried out by the contractors, though we have been promised it will be completed in November. Meeting to discuss phase 2 of the park (play area) will not start until the New Year.

## **The Old Mill**

By December we hope to receive the stage 1 funding from the Big Lottery. We have selected our business consultant and our architect and we now have to wait for the Big Lottery to approve our costings for carry out the work to ensure we have a robust stage 2 application. Our business consultants are SKS Scotland and once they start working will be carrying out various community consultations so we can get your views of the Old Mill and its future plans. This is an important part of the process as the Big Lottery needs evidence that the community are behind the project. SKS Scotland is to consult with the community – how has yet to be finalised but will probably consist of a questionnaire, online survey, talking to groups and public events. When we start please let us know your views.

## **Community Partnership The Gathering**

Rosemary Simpson, a director of KAT, attended the day which was held in Gartmore Village Hall. The hall has great space and loads of storage which, when carrying out its space audit, is something KAT found out that Killin needs. The event was a good day as the forums were inspiring and there was a chance to do some networking and gather information that would be helpful to KAT. KAT nominated Willie Angus as its 'Long Standing Champion' and the

awards were given at this event. The theme for the event was food and drink and we are pleased to say that Willie was honoured with the Golden Delicious award.

**Theresa Elliot**

Project Support Worker  
01567 820628 or 07789 265823

## **KAT Grant awards**

### **More funds available**

Earlier this year, KAT made awards totalling £1,930 for community projects or activities to provide support and help enhance the lives of people in the area. These were given to several local groups for equipment and supplies and to support different activities.

More funds are being made available, this time for applications of up to £200 each. Please apply using a standard form, which can be downloaded from the KAT website or collected in person from the Old Mill. Forms should be returned addressed to KAT at the Old Mill by 31st December 2015.

Priority will be given to groups who have not previously been awarded grants. The key criterion is to demonstrate benefit to the local community. A group does not have to be a charity to apply. Please contact the KAT Treasurer, Mark Beaumont (01567 820626) or any KAT director for further details.

## **The Old Mill Report**

The Mill is open from 1pm–4pm every day during November and December, closing on 21<sup>st</sup> December until Sunday 10<sup>th</sup> January when we will open every weekend from 1–4 pm.

We will hold *The Bedding of the Healing Stones Ceremony* on Christmas Eve at 11am.

We are thrilled to be having a Christmas Fair on Saturday December 5<sup>th</sup> from 11am–4.30pm where we will be selling upcycled crafts, jams, marmalades and chutneys and lots of Christmas thrift. We look forward to seeing you.

On 29<sup>th</sup> October we had a tea party for the dedicated team of volunteers who give their time at the Mill. It was good to see so many people attending.

We hope to open seven days a week from Monday 7<sup>th</sup> March from 10am–4pm and can only succeed in remaining open with volunteers. We need as many as possible for this to happen. We have wheel volunteers, crafting volunteers, volunteers who help with the administration and also skilled tradesmen who help with the maintenance of the building. If you would like to volunteer please contact Franny.

We welcome your donations and are very grateful for your continued support. Please note we no longer sell electrical items, cycle and motor cycle helmets, duvets, pillows, baby car seats, buggies, cots and VHS tapes.

If you have a large amount of goods to donate please contact Franny and arrange a suitable time when we are able to move and store the items. We wish you a very Happy Christmas and New Year

**Franny Morrison**

Old Mill Manager

07802 929796/01567 820628



**SCISSOR SISTER Hair Salon**

- Full range of hair and wedding services
- We also have a wonderful range of LADIES CLOTHING, BAGS AND PURSES

We have expert Colourists  
Stylists and Hairdressers  
Tel: 01567 778888 M. 07595 356 366  
Nail and Hair Man Sat  
[www.scissorsistersalon.co.uk](http://www.scissorsistersalon.co.uk)

## **Andyman Services Property and Garden Maintenance**

Fencing, Timber Decking, Patios,  
Slabbing, Landscaping,  
Grass and Hedge cutting

Extensions, Renovations, General  
Building, Stonework, Roofing work

Mob: 07909768249

Tel: 01838400597

[andycousinz@aol.com](mailto:andycousinz@aol.com)

## Community Partnership Gathering

On the first Saturday of November each year, the Community Partnership and its members gather for the annual Gathering. This year's event 'Food for Thought' had a distinct local food and drink theme as it explored the role that it can play in community life. The Gathering is a FREE event open to Community Partnership members and community representatives and is a great opportunity to meet with other like-minded people.

The Gathering is also an opportunity for the Community Partnership to recognise the amazing work being carried out at a grassroots level in communities across the National Park. The 'Community Champion' awards acknowledge the work of groups and individuals within the Park who have contributed greatly to the development and enhancement of their communities.

Out of this year's four categories, a special award went to one Killin resident, Willie Angus, who scooped the



'Golden Delicious' award, aptly named to tie in with this year's Year of Food and Drink theme. The award for 'Long Standing Champion' is in recognition of a community member who has shown an on-going and sustained commitment to supporting community life in their area. Judges described Willie as someone who has a huge range of achievements. His service to the community of Killin is extraordinary; creating job making and sustainable projects which have enhanced not just the life in his community but which encouraged people to "envision Killin as a better, healthier and more dynamic place to live in and to visit".

Willie has instigated carbon reduction projects, has negotiated the leases of the Old Mill and Breadalbane Park and has displayed a willingness to learn new things and forge new relationships.

**Do you need a hand  
coping with the festive period ?**

***Catering by Carlotta***



**Outside catering for all events,  
private or corporate, large or small.**

**Carlotta Fraser  
01567 820999 or 07712435465  
Ardlochay, Killin**



- . Weddings
- . Christenings
- . Dinner Parties
- . Buffets
- . Shooting & House Parties
- . Club Events
- . Meetings



**frenchduncan.**  
chartered accountants

- Audit & Assurance
- Accounts Preparation
- VAT Planning
- Business Recovery
- Corporate Advisory
- Forensic Accounting
- Outsourced Finance Function
- Insolvency
- Tax Consultancy
- Tax Compliance
- HR Services
- Grant Work

**Macfarlane Gray House**

Castlecraig Business Park, Stirling FK7 7WT

Tel: 01786 451745

Email: [g.collan@frenchduncan.co.uk](mailto:g.collan@frenchduncan.co.uk)

[www.frenchduncan.co.uk](http://www.frenchduncan.co.uk)



## Remembrance Day in Killin



## Boxing Day Dip 2015

Come and support the Boxing Day Dip for The Falls of Dochart Retirement Home and the PSP Association (Progressive Supranuclear Palsy) at 2pm at the Killin Hotel. Please get involved by taking part or sponsoring people will be taking the plunge! Why not post it up on FB to spread the word and encourage your pals to join you. After all it's a community event for great causes and what would you rather be doing on Boxing Day?

What's more it's free to take part! For a sponsorship form or to find out how you can help, contact Sarah on 07973 253 101 or [info@therealfoodcafe.com](mailto:info@therealfoodcafe.com) Anna Nicolson has established what could become another great Killin tradition with enough village support. She has asked us to take over the running and fundraising of the event and we are delighted to take the plunge!!

Come along and join in the fun at the

# KILLIN BOXING DAY DIP

2PM AT THE KILLIN HOTEL

Support us raising money for  
The Falls of Dochart Retirement Home  
& PSP Association  
(Progressive Supranuclear Palsy)

Hot Chocolate & Mackies Ice Cream for all Dippers!  
Prizes for Most Money Raised & Best Fancy Dress

This event is being supported and organised by

the REAL **FOOD** CAFE Tyndrum

Contact us for a sponsorship form and we will match the largest amount of money raised for the event.

Check out the website for our winter opening times  
[www.therealfoodcafe.com](http://www.therealfoodcafe.com)





## Mervyn's Weather

In the autumn issue of Killin News pious hopes were evinced in this article that the long spell of unsettled, wet and miserable conditions which plagued summer 2015 should relent and offer us an "Indian Summer" type interlude of more acceptable weather. As September progressed, despite a few hiccups, this prayer was, to a considerable extent, answered and, indeed right into early November, longer spells of good harvesting weather prevailed.

Having said this, few days gave prolonged sunshine, in fact the past few weeks have been "a season of mist and mellow fruitfulness" with odd clear sunny days. Indeed November 1st produced 7.3 hours of unbroken sunshine - a 'possible' for this weather station, taking into account the time of year and the fact of high ground both to East and West.

The grain harvest was eventually secured in good condition and even some late hay was "stolen" from the elements!

Over recent years, despite high pressure systems occurring reasonably frequently - as in the past few weeks - prolonged sunshine has been a bonus. Mostly conditions

prevail which are described as "anti-cyclonic gloom" i.e. cloudy, calm and cool, "stagnant" periods which are at best interludes of release from prolonged wet, windy and "disturbed" weather.

Up until time of writing frost has been restricted to one or two days of ground minima just, and only just, below freezing point and no air frost. Gales also have so far been absent. The result of this lack is that oak leaves are only just, in a few cases, beginning to show autumn tints, while beech, birch, rowan etc., are a riot of colour. Some more exotic trees produce vivid red, vermillion and pink shades. The poor old ash, however, is not only normally the last to "green up" in late spring but also one of the first to discard its leaves, sometimes not even displaying Autumn colouring.

Swallows and house martins actually stayed longer this year than has been the case of late and they were also in larger numbers. Swifts, however, were at an all time low. Some years ago 60 or more were in evidence; this year but 3 stayed here.

**Mervyn K. Browne**  
Ardalnaig

## Keeping Warm

Worried about energy bills and want to reduce your carbon footprint?

Stirling's Low Carbon Future is a local energy advice and wood upcycling project that offers homeowners and tenants across Stirlingshire the chance to access free, impartial energy advice. Funded by the Climate Challenge Fund, the project offers local people the chance to find out how to keep homes warm and cosy whilst keeping bills and carbon footprint down. Heating your home can be a challenge in winter time, particularly for people living in rural areas, however there are many actions that householders can take to reduce their bills, from installing insulation and energy efficient lighting to investing in a biomass boiler or solar panels. Whilst the cost of installing energy efficient and renewable technology can sometimes seem daunting, there is plenty of financial help available, including interest free loans and grants from Home Energy Scotland. To find out more about which measures might be suitable for your home, come along to MacGregor's Market in Killin on Tuesday 1<sup>st</sup> December between 1-4pm for a chat with Stirling Low Carbon Future's friendly Energy Advisor and Fit for the Future from McLaren Leisure Centre. To find out more about our project including our wood upcycling activities visit [www.slcf.org.uk](http://www.slcf.org.uk).

## The Coach House Hotel



Tel : 01567 820349



**Home cooked meals**  
(served all day until 8pm)

**Accommodation**

**Bar with pool table**

**Real Ales**

**Live Music Wednesday 30th December**

**Christmas greetings to all our customers**



Repairs to Forestry,  
Agricultural and  
Plant Machinery

**Steel Fabrication**  
**Gates & Railings**  
**Cattle Grids**

Hydraulic Hoses  
Diesel Tanks  
Site Safes



**A & B Services**  
(Scotland)

[www.abs-scotland.co.uk](http://www.abs-scotland.co.uk)  
[info@abs-scotland.co.uk](mailto:info@abs-scotland.co.uk)

**Husqvarna**

**Sell, Service, Repair**

- ✓ Lawnmowers
- ✓ Strimmers
- ✓ Ride-ons
- ✓ Bars & Chains
- ✓ Safety Clothing
- ✓ Boots
- ✓ Oils

**Competitive Prices**

Workshop - 01567 820840

Gordon - 07798 718708 Steve - 07798 718707  
Main Street, Killin, Perthshire, Scotland FK21 8UW

*Season's Greetings to all our customers*





## Frost Report

### Autumn Changes

At the beginning of November we were seriously into Autumn the "Season of mists". Changes in bird behaviour have become apparent. Several of us were commenting that there was no sign of the annual return of Scandinavian fieldfares and redwings to feed on our Autumn berries then, one morning, thousands suddenly appeared. They stripped every berry in the area during that day then the clouds of them moved on. The visitors to our bird feeders have changed too. The siskins and goldfinches have disappeared at the moment and, for the first time, we have a pair of nuthatches. We are not sure that it is a pair as the sexes look alike. We noticed one who entertained us by trying every type of food put out, even the fatballs. He (codename Norman) seemed to come and go so rapidly that we wondered if there were two. Then one extended coffee break we saw the two together and, even though we are not sure if it is a pair, they are now known as Norman and Nigella. They still go round all the buffet before them but prefer the sunflower seeds. Looking up their natural food we found that beechmast is a favourite. This led us to wonder what would happen to all the birds and mammals which depend on this food source if some environmentalists had their way and cut down all beech trees claiming that they are a non-native species. It would appear that they have been native to S. Wales and S. England since the last ice age so they could well have arrived naturally in Scotland from there. In any case it is environmentally unscientific to eliminate a species which has been around long enough for other species to become dependent on it. Certainly the scenery around Killin would be the

poorer, especially in Autumn if this were to happen. On the other hand, the Scottish government is still pressing to plant more trees. It is hoped that a thought is given to the heather moorland. Again, this is necessary for many species including hen harriers who continue to thrive on keepered moorland, now far more successfully than on R.S.P.B. sites where they are having great difficulty sustaining breeding numbers. Since W.W.2 overgrazing and tree planting have resulted in the loss of almost a third of heather moorland in Britain. Heather moorland is now rarer than rainforest, with the U.K. having 75% of all that remains in the world. Maybe, of course, the trees will be for the rewilded wolves that they keep talking about. A cautionary tale recently came from the French Alps where the protection of re-introduced wolves was creating havoc with sheep. 131 deadly attacks last year resulted in the killing of 8,500 sheep nationwide. So fifty farmers held a National Park president hostage until he allowed an increase in annual culls. Get ready Perthshire farmers - decide who you would hold hostage. Of course some species arrive without help. Pink salmon, which usually live in the North Pacific, have been recorded in the Tyne and along the coast at South Shields. Autumn is also the time to hear the stags roaring in the rut. This is the mating season when stags will fight very fiercely and often wound each other. My son at Glen Falloch shot one stag which proved to be very badly bruised, especially around the head and had an antler stab wound near to a very delicate area. Let's say that sex would be the last thing on his mind for a while. Many of you would have seen the footage on Autumn

Watch where part of an antler was broken off in such a fight. Although there is no feeling in the antler itself you would imagine that the stag had a nasty headache - probably a bit like the concussion suffered by rugby players. My wife refuses to watch Autumn Watch unless the sound is off to avoid the commentary. But then it does seem expensive for the budget-watching BBC to fly Michaela Strachan over from South Africa when we have so many good presenters here. Chris Packham is quoted as calling countryfolk "brutalist thugs, liars and frauds who destroy our wildlife and dishonour our nation's reputation as conservationists and animal lovers". The now un-politically correct David Bellamy supports rural workers and their activities. While heaping great praise on the work of the late Sir Peter Scott, did Chris Packham even know that Sir Peter began his interest in wildfowl with years of wildfowling, i.e. shooting large numbers of geese etc. and he began his collection with birds that had been winged. (I heard this praise of Sir Peter while my wife was out so I had the volume up.) To finish on the traditional autumn game of conkers, it is now, of course, considered too dangerous but if you happen to own a suit of light armour and a fencing mask you could maybe have a go. I have read that the best way to harden conkers is to feed them to pigs then retrieve them 'at the other end of the digestive process!' Please remember to wash hands afterwards. In the fashion world Mr. Fox has found that black is the new brown. You can see pictures and video of the black Yorkshire fox by googling 'black fox in U.K.'

**Tim Frost**

### **RG ELECTRICAL & CONTRACTING** **ELECTRICAL**

- ELECTRICAL INSTALLATION & MAINTENANCE
  - FAULT FINDING
- INSPECTION & TESTING
  - RE-WIRES
- ELECTRIC HEATING SYSTEMS

#### **CONTRACTING**

- TRACTOR & TRAILER HIRE
  - SNOW CLEARING
- FIREWOOD PROCESSING
- DIGGER & PLANT HIRE
- FIREWOOD SUPPLIES

**CONTACT ROBERT GRANT**  
**M: 07766 202418**  
**E: rgeleckillin@gmail.com**

*Seasons Greetings to all our customers  
and best wishes from all the staff at*

### **Stitt Brothers**

Building Contractors  
Painters and Decorators  
Established 1952

**Station Road, Killin, FK21 8UH**  
**Telephone: (01567) 820344**  
**Fax: (01567) 820944**



### **John Lynch**

Dip. Pod. M

**STATE REGISTERED  
CHIROPODIST**

Available for House Calls

**Tel: 01259 212763**

After 6.00 pm

*Happy Christmas to all our customers.  
First Foot Forward for 2016*



## Strathfillan Community Development Trust

With the end of the tourist season nearly upon us, the work for Strathfillan CDT starts in earnest. The planned improvements in Tyndrum Community Woodland and Shelterbelt will be beginning in the next few weeks – so if you see anything going on come and ask us about it, or even join in. Four of our woodlands volunteers, Andy Brown, Paul Lilly, Billy Ronald and Garry Hinds, successfully completed a Trust led chainsaw licence course in our woodlands in October – well done to them! Works are progressing with the Crianlarich Paths Project, with a new footbridge and upgraded path near to the playground completed, making it much easier to access the Community Woodland. Due to a couple of unforeseen hiccups, the works have been slightly delayed, but they should be completed in early 2016 (weather permitting!). The Trust would like to thank all those who attended the successful Volunteer Planting Day on 20th October at Lower Station Yard in Crianlarich. Special thanks to all the Primary School children, who worked very hard planting trees and sowing grass seed to help make our lovely village even more beautiful. Watch out for more volunteer events around Tyndrum and Crianlarich in the coming months. As the cold, dark winter days draw in, the Trust and Tyndrum Village Hall are hosting more activities to help beat the winter blues. The Trust's

first Café Sci of the season kicked off to a good start in October, with a lively discussion on Climate Change. Our next session will be mid-late November (TBC), and the topic chosen is The Internet. So come along and join a relaxed and informal discussion about the pros and cons of the World Wide Web and what the future holds. Refreshments are provided, and each session is £3 per person.

Strathfillan CDT have postponed their AGM until next year. Tyndrum Village Hall will be hosting new Lazy Afternoon Ceilidhs, running on the first Friday of every month (December 4th, January 8th and February 5th) 1pm-3pm. This provides the opportunity for people to get together, have a wee dance, a wee blether and learn some new skills or pass on existing skills. So whether you're 1 or 100+, a ceilidh 'pro', or don't know your Gay Gordon's from your Dashing White Sergeant, come along and join in. Tea, coffee and home baking provided - adults £2.50, children 50p.

On Sunday December 6th, 12 noon-2pm, Tyndrum Village Hall invites all local children to get into the Christmas spirit and help make and hang decorations in the hall. Bring a packed lunch (though I am sure a few Christmas treats will be provided – free).

The Trust would like to thank Jen and Andrew at the Tyndrum Inn for their extremely generous donations of £1000 each to the Trust, the Lunch Club and Tyndrum Village Hall, through their fundraising efforts. This is much appreciated by all the groups and will significantly contribute to our ability to provide events and activities for the community. We would also like to thank Isla and Bryan at the Londis

Store, Crianlarich, for their generous donation of £250 from their carrier bags sales for works across Crianlarich. This is a much appreciated contribution towards maintaining our village. A quick word of thanks again to Lesley Wilkie for the new doors in Tyndrum Village Hall – they are now installed and looking great.

Finally, the Trust would like to congratulate Billy Ronald for being elected to the National Park Authority Board and we look forward to his continuing work with the Community Woodlands Group.

**Kelly Clapperton-Bates**

## The Therapeutic Effects of Meditation

Great benefits can be derived by people meditating together in groups, either utilising an individual technique, such as TM, or being led through other forms of meditation. All functions of the body and mind move towards the relief of stress during meditation, promoting relaxation in many forms and improved performance in all kinds of activities.

Meditation group in Tyndrum Village Hall Wednesdays at 7pm. If you're interested in an introductory talk or starting a group contact me.

**John Riley** 01838 400303

## Strathfillan Community Council

**Health:** A meeting was recently held with NHS Forth Valley to discuss various issues in relation to hospital appointments (including travelling expenses, parking, timing of outpatients appointments, choice of hospital). The meeting was very positive, although no formal responses to the points raised have yet been received.



**Crianlarich Store**

**Londis** POST OFFICE

www.crianlarichstore.co.uk  
shop@crianlarichstore.co.uk  
Tel: 01838 300245

Follow us on Facebook **LondisCrianlarichStore**



**Jane Watts**

Popular local violin and piano teacher has a few vacancies

Please ring  
**0776 6566935**  
**01567 820141**

**Telephone: (01567) 820342**

**CHARLES GRANT**  
Painters and Decorators

**Beechcroft, Main Street**  
**Killin, Perthshire FK21 8UT**

**Tiling, Artexing, Graining,**  
**Ragrolling, Sponging, Stripping,**  
**Paper Hanging, Cornicing,**  
**Fire Proofing,**  
**Carpet and Upholstery**  
**Cleaning Services**  
**Festive Good Wishes To All**

# by the Way

**Transport:** Alan attended a meeting with other CCs from the area, along with Police Scotland and BEAR to discuss the difficulties caused by prolonged road closures following accidents. It is hoped that there will be better communication regarding road closures in the future.

**Crianlarich Paths:** The majority of the new paths have now been constructed, with just one small section remaining. The content of the interpretation panels and directional signposts are almost finalised. It is now expected that the paths will be complete and the signs installed in January.

**Tyndrum Woodlands:** The CC will soon be submitting a planning application on behalf of SCDT for a Gruffalo Trail and Interpretation boards within Tyndrum woodland.

**DRT:** Stirling Council have produced a short online survey about DRT services, as part of the proposed cuts under the next round of Priority Based Budgeting (PBB). All users of DRT and local bus services are urged to complete this survey before 18th December 2015. It is available at [www.surveymonkey.com/r/supportpublictransport](http://www.surveymonkey.com/r/supportpublictransport). The CC have

requested that Stirling Council provide the survey in other formats for people who do not have online access, but do not know if this will be forthcoming or not.

**Housing:** There are currently a small number of vacant Stirling Council and Rural Stirling properties in Strathfillan. Anybody who is seeking housing within the community should contact these bodies to ensure their name is on the relevant waiting list.

**Resignation/Co-options:** The CC would like to congratulate Billy Ronald on his recent election to the National Park board. As a result, Billy has resigned from the CC. Andrea Hobson and Sheona MacLennan have both been co-opted onto the CC but there is still one vacancy. The CC would particularly like to have better representation from Tyndrum and Inverarnan. If you are interested, please speak to a member of the CC.

## Glenfalloch Estate & Hydro Schemes:

David Lowes of Glenfalloch Estate updated the CC on the development of the 4 hydro schemes. Once complete, the schemes will produce a total of over 6MW of electricity. One has been in production for a couple of years, a further two will be in production by December 2015 and the remaining one in September 2016. Glenfalloch Estate have chosen to make regular financial community contributions, in the form of payments to SCDT, from these Hydro Schemes. This is expected to be in the region of £3000 per year (index linked). Sincere thanks to all those at Glenfalloch Estate for this contribution, which is very gratefully received, and a significant help to the ongoing running costs of SCDT.



### The Strathfillan Lunch Club

is delighted to announce that Foundation Scotland has awarded them a grant of £910 to help fund meals for local over 60s.



**Foundation Scotland**

Where philanthropy meets community

*Lazy Afternoon Ceilidhs*  
Tyndrum Village Hall  
1-3pm  
£2.50 adults, 50p child  
Usually 1st Friday of the month  
(4th Dec, 28th Jan, 5th Feb)

*Refreshments provided*  
All ages welcome and needed!

*Afternoon ceilidhs create a chance for all age groups of the community to come together to enjoy time together for an afternoon once a month. We hope our time will be encouraged to dance (and not just sit back) and we say all have fun. The ceilidhs are open to those who want to come and dance, those who want to come and sit, watch and relax and those who want to help out serving tea. Please come and join in!*

**PFK**  
PERFORMANCE CENTRE  
SERVING • DIAGNOSTICS • MOT & PREP

140 Main Street  
Callander

01877 331 569

**Riverside Veterinary Clinic**

*Looking after your best friend!*

Experienced professional grooming and bathing facilities for Large and Small Dogs

Join our Pet Health Plan to budget monthly and reduce the cost of your pet's care

Tel: 01877 381213 for further details and to make an appointment

1 Lagrannoch Industrial Estate, Geisher Road  
CALLANDER FK17 8LX  
[enquiries@riversidevetsstirling.co.uk](mailto:enquiries@riversidevetsstirling.co.uk)  
Find out more at [www.riversidevetsstirling.co.uk](http://www.riversidevetsstirling.co.uk)  
Or find us on Facebook

**VET - Marlaigh Smith BVM&S MRCVS**

**PROFESSIONAL CARPET & UPHOLSTERY CLEANING**

Excellent Fabric Cleaning Solutions  
Pet Stain & Odour Removal

Services Include:  
Carpets - Upholstery - Leather  
Mattresses - Stone - Vinyl - Slate  
Patio Decking

Call now for details:  
**07827 014328**  
web: [ecocarpetcleaning.net](http://ecocarpetcleaning.net)



# Get ready for Christmas with **Davidsons** CHEMISTS



Please ensure you order your repeat prescriptions in plenty time, remembering that your doctor's surgery will be closed for 4 days over Christmas and also at New Year

Don't forget about our Minor Ailments Service this cold and flu season!

New Year's Resolution to stop smoking? We're here to help with free treatment and support!



Range of seasonal gifts now in-store including a selection of children's gifts, perfume and aftershave

**THE GREEN  
WELLY  
STOP**  
AT TYNDRUM



CELEBRATING  
50  
YEARS



Don't miss us - we're on the main route North to Fort William, Oban, Skye & the west coast of Scotland



## Christmas Festivities 5th & 6th December

- ❖ Free mulled wine and tasty treats
- ❖ Free whisky & Liqueur tastings
- ❖ Free gift wrapping on all purchases
- ❖ Free face painting
- ❖ Festive menu



- Whisky Galore - A fantastic range of malts, blends, wines, beers & spirits
- Restaurant & Snack Stop Café - Great home-made soups, meals & baking
- Goodies & Gifts - Sweets, food, drinks, presents, kitchenware and treats
- Outdoor Store - Everything and more for walkers and climbers
- Filling Station - Fuel, groceries, pharmacy, household, camping,

FILLING STATION:		April - Oct	Nov - March
Fuel, groceries, newspapers, pharmacy, household goods, camping, drinks, off sales, cash machine		7am - 10pm	8am - 9pm
GOOD FOOD			
Restaurant	8.30am - 5.30pm	8.30am - 5pm	
Snack Stop Café	7am - 9pm	4pm - 9pm	
FINE SHOPPING			
		April only	October only
		8.30am - 5.30pm	8.30am - 5.30pm
		Exeter - Sept	Nov - March
		8.30am - 7pm	8.30am - 5pm

The Green Welly Stop, Tyndrum, Perthshire, FK20 8RY. t:01838 400271 www.thegreenwellystop.co.uk

# Killin Medical Practice

## GP Update:

Dr Syme and Dr Watson are delighted to announce that Dr Tara Mill has joined the practice as a Partner. As many of you will know, Dr Mill covered Dr Watson's recent maternity leave and by coming on board as a partner helps to secure the future of GP services to the patients in Killin and surrounding areas. Dr Syme will be retiring in September 2016 and will no longer have regular sessions at the practice, however he will cover the holiday absences for Dr Watson and Dr Mill.

### Festive Closures:

A timely reminder that Killin Medical Practice will be closed over the festive period as follows:

Friday 25<sup>th</sup> December and Monday 28<sup>th</sup> December 2015

Friday 1<sup>st</sup> January and Monday 4<sup>th</sup> January 2016

Please order prescriptions in plenty of time to avoid that last minute rush.

### Closer Integratiion of the Primary Care Team:

A poster on this subject may be seen throughout your various communities.

## Closer Integration of the Primary Care Team

Killin Medical Practice has been asked by the Health Board to develop a closer working relationship with the Paramedic team based at Killin Station. Many people will already have had contact with the Paramedics, who are highly trained and skilled health professionals. At present, they aren't being used to their full potential. Closer integration with the practice will help address this problem and will also relieve some of the pressure on GPs.

In future, members of the Paramedic Service based at Killin Medical Practice will be more closely integrated into the Primary Care Team and will provide some of the care which is, at present, undertaken by the GP and District Nurse Team. If, for example, you require a housecall for a new problem, this may be dealt with by a Paramedic instead of a GP. The Team will match requests for

medical service with the clinician most appropriate and skilled to deal with your problem.

To help with this process, Paramedics operating from Killin Station will have access to Killin Medical Practice records. Paramedics are health professionals in their own right and this information will be used appropriately and governed by the same standards required of any of the Health Service team with access to your information. Access to patient information will only be sought where there is a clinical need. A full audit trail is available for any access to records.

In addition to maintaining the local Paramedic Service, this will also improve services from the Practice and we very much welcome this development. If you have any questions about this change, please get in touch.

## Direct Response Transport

The situation in our area is not good and Stirling Council looks set to make it even worse by cutting it and the few remaining supported bus routes even further. They have put out a short online survey due to be in by 18<sup>th</sup> December. It is important for Killin not to get even more cut off than it is at the moment, so please make the effort to fill in and return the survey. Even if you do not use buses or DRT at the moment, you may need to in future. The link is: <https://www.surveymonkey.com/r/supportedpublictransport>

## A New 'Wee Bake Shop'

The renovated Wee Bake Shop is now up and running and looking good. Shari Williamson (Osler) has moved back to Killin from Aberdeen and has the shop open Monday to Saturday 8am - 2.30pm selling a mixture of pies, cakes, soups, toasties, tea and coffee - and anything to help sustain you through the winter months.

Shari is a stockist for Mhor Bakery and can order anything specifically required - just ask or ring 01567 820784

Merry Christmas and a Good  
New Year to everyone in Killin  
from all the staff at



Tel: 01887 820771

Email: [sherfield@breadalbanvets.co.uk](mailto:sherfield@breadalbanvets.co.uk)

Find us at [www.heartlandvets.co.uk](http://www.heartlandvets.co.uk) & on Facebook

Clinics are held in the bowling green pavilion in Killin on the following date between 9.30 & 11.30am

Wed 9th Dec Wed 23rd Dec Wed 6th Jan

Wed 20th Jan Wed 3rd Feb Wed 17th Feb

Wed 2nd March Wed 16th March Wed 30th March

Wed 13th April Wed 27th April Wed 11th May

Wed 25th May Wed 8th June Wed 22nd June

Repeat prescriptions, food or any other veterinary requirements can be collected on these days, providing they are ordered in advance.

TELEPHONE 01887 820771 FOR AN APPOINTMENT



[KillinMusicFestival.com](http://KillinMusicFestival.com)

# Celebrating 21 Years

Strathfillan Wigwams was developed on SAC's Auchtertyre Farm at Tyndrum opening in 1994 as a farm diversification project. The farm had lost the income from the suckler cow herd when all the cattle were sold off. We had to source a project which would equal the income from the cattle. Therefore we made the decision to invest capital providing low cost budget tourist accommodation.

We started with two very basic little wooden wigwams, but as they grew in popularity more were purchased with three other sites which started our Wigwam Holiday Network and the new Wigwam Brand was born, creating the new Glamping Holiday, with access to the great outdoors.

Strathfillan Wigwams has been run by Mrs Rena Baillie and husband Tom for the past 21 years and we have celebrated our success along with all our staff, with the cutting of our Wigwam cake and launching our new ensuite wigwam

The Strathfillan Wigwam Village is the longest established glamping wigwam site in the UK which now extends to more than 70 stunning destinations throughout the UK and Ireland which started here in the hills of Tyndrum.



# escape

IN KILLIN

*Merry Christmas from all  
at Escape in Killin*

*Many thanks for your support throughout 2013*

**The Nail Bar**  
Treat yourself to a  
manicure and  
polish  
Specialising  
in Shellac  
Natural Nails

Main Street  
Killin, FK21 8UX  
Tel: 01567 820212  
[info@escapeinkillin.co.uk](mailto:info@escapeinkillin.co.uk)  
[www.escapeinkillin.co.uk](http://www.escapeinkillin.co.uk)



## Trust Housing



On 6th July 2015 Trust Housing Association and Venachar Limited, Rural Stirling Housing Association's (RSHA) wholly owned subsidiary company, entered into a formal management agreement for the provision of housing management and property services at Trust's development at Ballechroisk Court, Killin. This was after close consultation with tenants. Ballechroisk Court is one of Trust's general needs developments, with 16 flats in a rural setting. The proposal to work in partnership with Venachar Limited is ideal as RSHA owns and manages 48 properties in the village. The Killin development changed from a sheltered housing development to a general needs development in 2009, but tenants still enjoy some of the communal facilities that you would find at sheltered developments.

Alan McKee, Housing Officer for RSHA holds a weekly surgery in the development lounge allowing tenants to discuss any tenancy matters face to face. This is a welcome addition for tenants. One tenant said: "it's great having someone on hand at the weekly surgery that you can speak to face to face".

Representatives from Trust and RSHA attended a tenant's meeting on 13th August. Feedback was very positive and tenants felt they were benefiting from the enhanced service that the new management arrangement provides.

Tony Teasdale, Director of RSHA said on behalf of Venachar: "With our more local presence we hope to be able to provide Trust and its tenants with a quality service, whilst also generating additional revenue."

## Killin & District Telephone Book

Unfortunately work on the Telephone Book has come to a standstill. The Killin News office was affected by flooding in August and major work needs doing but cannot be started until the source of the flood has been dealt with. Both Stirling Council and BT are involved but we have been given no information about when work will start. Although we are putting up with working in a damp and smelly office while producing the paper, we wish to spend as little time there as possible and decided that the Telephone Book would have to wait until the work has been done. Our apologies.

## Apology Railway Memories

In the Railway Memories article in our last issue, some quotes were attributed to the wrong people, in particular to Molly McRobbie who certainly did not attend the dances in Callander. To Molly and to anyone else who was misquoted we sincerely apologise.



## MAINS / TAYMOUTH COUNTRY ESTATE & GOLF COURSE KENMORE > PERTHSHIRE



### BAR & RESTAURANT

- Lovely menus & wines
- Dining by open fires
- Food served daily from 9am
- Child friendly menu and outdoor play area
- Pets welcome in bar area

01887 830763



### GOLF COURSE

- Parkland course
- Club & trolley hire
- Winter green fees from 1st November to 31st March only £11 pp
- Visitors welcome
- Open daily (weather permitting)

01887 830226



### SELF CATERING

- Luxury 4 & 5\* self catering accommodation
- Sleep 2-12
- Hot tubs
- Saunas
- Games rooms & pool tables
- Full weeks & short breaks

01887 830226



*Real Freedom, Real Luxury, Real Scotland*

01887 830226 [www.taymouth.co.uk](http://www.taymouth.co.uk)



# **KP's DIY & Builders Merchant**

KP's would like to thank everyone for their support in 2015 and to wish everyone a very Happy Christmas and a Prosperous New Year

## **Go Nuts at KP's 2-day Annual Sale**

**20% OFF CHRISTMAS SALE 23<sup>rd</sup> and 24<sup>th</sup> December**

(subject to conditions)

**Sale Opening Times 23<sup>rd</sup> 8am to 5pm 24<sup>th</sup> 8am to 3pm**

**Come and have a look round and enjoy a hot mince pie**

Over 2015 KP's has extended its product range so why not come along and see what's new, pick up a bargain or a few Christmas presents for the DIY enthusiast and Trades Person

Logs, Coal, Peat, Kindling and Fire Lighters

New and Extended Range Bird Food and Feeders

Rock Salt, Snow Shovels and Sledges

Timber and Sheet materials

Building Materials and Landscaping

Electrical Wire, Fittings, Light Bulbs and Batteries

Plumbing and Heating, Guttering and Drainage

Painting and Decorating

Fencing Materials for Garden and Farm

Ironmongery, Nails and Fixings

Gardening Tools, Compost, Bark, Weedkiller, Plant feed etc

General Hand and Power tools

And much, much more come and see for yourself

### **Christmas and New Year Opening Hours**

We will close 24<sup>th</sup> December at 3pm and reopen on the 4th January 2016 at 8am

Rob Roy Workshop, Balquhiddy, Lochearnhead.

01877 384274 Email; [Kevin@robroyworkshop.co.uk](mailto:Kevin@robroyworkshop.co.uk)

Website-[www.kpdiy.co.uk](http://www.kpdiy.co.uk)

# Breadalbane Adventures

## The Loch Earn Munros - 8 hours - 25 miles by cycle and 6 miles hill walk

A brisk September Thursday offered enough promise to tackle a long-held plan: a warm up (and down) cycle from Killin over Glen Ogle and a traverse of Ben Vorlich and Stuc a' Chroin. Fell running shoes were looked out, waterproofs, gloves and hats, map and compass and emergency kit had been packed the night before and great planning meant the packed lunch was crammed with roast beef. A flask of coffee was supplemented by apples and chocolate picked up en route. We were two: me chunky, gnarly-kneed, headstrong and experienced but with mechanical limitations and herself, the timid gazelle, hugely capable but cautious on challenging ground or in poor weather.

National Cycle Route 7 West out of Killin has a gentle gradient on gravel for the first couple of miles. It turns up the forest road for a bit and has a couple of steeper sections before reaching a narrow tarmac strip for the last pull up to the air crash memorial and the snack bar at the top of Glen Ogle. After crossing the A85 it descends gently on smooth whin dust for 3½ miles, crossing the viaduct on the wonderful old railway path, reaching a steep and narrow tarmac zig-zag descent above Lochearnhead. A side road drops to the main road, now the A84, to be carefully negotiated for ½ a mile until the South Loch Earn turn off.

With the bikes chained at the East gate of the Ardvorlich estate, we set off on foot up the Glen Vorlich track, guided by a couple of helpful signs and soon working hard as height was gained. After a mile or so the path crosses a bridge and climbs into Coire Buidhe. Swirling mists above hid the summit from view as we reached a height of 1,500ft where the walking becomes more

strenuous, climbing the corrie shoulder to gain the North ridge. Underfoot the path is well made and remains so until the top. With her usual patient tolerance, the gazelle listened to my tale of a barefoot summer ascent of the hill some 35 years before.

As we climbed higher, the clag persisted and the Southerly wind moaned round the North-East shoulder of the hill. Two wheezing fellows appeared in the mist ahead, struggling with the steep path. A brief conversation revealed them to be on their first ever Munro and we offered encouraging words before striding past.

The temperature dropped significantly as we slogged up the final 400ft of this mica schist pile, now wearing extra layers in the strong breeze. We reached the summit of Ben Vorlich, a bit over 3,200ft, after 1¾ hours stiff walking, without rest stops, and the clouds lifted to reveal our recent route, though without any sign of the following party. Stuc a' Chroin emerged a mile away to the South West, rising steeply from the Bealach an Dubh Choirein and, hinting at rebellion, the gazelle asked for chocolate to counter her terror.

Her wish was granted and soon, of course, she was leaping from boulder to boulder leaving her creaking partner hurling in her wake. The 900ft drop is straightforward, merely painful, and soon the bealach was behind us and the dramatic North East buttress of Stuc a' Chroin reared up in front. I took my revenge by heading straight up a scree ramp as the gazelle dithered left and right. She confessed afterwards that she thought I was winding her up by going straight on, but soon resolved that if that was my route then she

would follow. Indeed she took the front as we scrambled around and up the imposing rocks of the buttress, soon to emerge on the top. Perhaps there was psychological security in having my bulk behind her.

The clouds had lifted well above the tops and we enjoyed glorious views North and West as we strolled to the summit, a further ½ a mile along the broad ridge. We met another pair of first timers here but didn't stop, instead returning to the shelter of the buttress and the remainder of our lunch. The decision to take the easier descent path to the North was not appreciated by my knees, despite having a walking pole; the scramble would have been less painful. Nevertheless the bealach was soon reached and the sun warmed us for a traverse across the peat bog as we trudged over the North West ridge of Ben Vorlich into Coire Buidhe. Posts mark a path that keeps above the fragile heather that grows in the lower part of the corrie and the ascent route is picked up just above the bridge over the burn.

Plans for dinner dominated the pleasant last mile to the bikes as the realisation dawned that Glen Ogle still loomed and my reputation for brilliant planning took a bit of a hit. The last of the chocolate and a tailwind to Lochearnhead dispelled the gloom and although the gazelle invoked limited gearing on her bike and walked up the zig-zags, we were soon enjoying the easy uphill gradient of the old railway path in wonderful late sunshine. We stopped to look back on the hills, both visible from Glen Ogle, especially the All that remained was a rapid descent to Killin, our minds exercised by which malt to have with a hot bath.

**Gnarly Knees**

### Grooming Marvellous

Dog grooming  
Dog walking  
Pet sitting  
Equine Dentistry



HND in Animal Care and Management  
Fully insured Qualified Dog Groomer  
Over 17 years professional experience with large and small animals  
Lindsay Willison  
mob 07570 131230

### Jasmine Beauty

6 Cross Street,  
Callander  
01877 7331417

#### Opening Hours:

Monday: 10am-5pm  
Tuesday: 10am-5pm  
Wednesday: 930am-6pm  
Thursday: 10am-6pm  
Friday: 930am-6pm  
Saturday: 10am-5pm

#### Website:

[www.jasminebeauty-callander.co.uk](http://www.jasminebeauty-callander.co.uk)  
Book online:  
[jasmine-beauty-appointments.com](http://jasmine-beauty-appointments.com)  
Email:  
[marianne@jasminebeauty.co.uk](mailto:marianne@jasminebeauty.co.uk)

### COOPER COTTAGES

SELF CATERING HOLIDAY HOMES

### Increase your letting potential

FULL OR PART MANAGEMENT  
ADVERTISING - BOOKING - CHANGEOVER

01877 384331/ 07879 853139

[enquiries@coopercottages.com](mailto:enquiries@coopercottages.com)

Properties wanted for short/ long term and holiday lets



# Taymouth Castle Tours



On the first Wednesday of every month until at least March, it is now possible to have a free guided tour of the inside of Taymouth Castle in Kenmore.

A huge amount of restoration work has been quietly going on and there is a lot to see - the library and great hall among many highlights. The tours are being organised especially to give locals an idea about what's been done over the past years and are quite separate from efforts to find people to buy into the part-ownership of hotel rooms.

Many plans still have to be realised, but a lot has been achieved. If you'd like to have a look around, make an appointment at 01887 830 546 or by email on

[sales@highlandtayretreat.com](mailto:sales@highlandtayretreat.com).

Expect the tour to take about an hour and a half - it will cost nothing and includes a welcome coffee in the temporary clubhouse bar, soon to become part of the resort proper. Tours are run at 10.00, 12.00 and 2.00

Booking is essential.



### McLaren Community Leisure Centre

McLaren Community Leisure Centre,  
Mallands Road,  
Collander,  
FK17 8JP  
Tel: 01877 330000

#### Leisure Facilities

- Swimming Pool
- Climbing Wall
- Fitness Suite
- Indoor Courts
- Full size 3G Pitch
- Cafe
- Multi-Purpose Arena
- Soft Play Zone
- Fitness Classes
- Kids Holiday Camps
- Meeting Facilities
- Lager Tag
- SGA Accredited Courses

[www.mclarenleisure.com](http://www.mclarenleisure.com)

**The Studio Killin**  
**Sheila's Wee Sweetie Shop**

We have approx. 200 kinds of Old Fashioned Sweets, also Jams and Conservees.

We are also continuing the Picture Framing and small Photographic projects

Telephone 01567 820820

## GRANT AND WELSH

(Sole proprietor: A Grant)

### Painter & Decorators

Ames Taping

Greenbank, Main Street, Killin  
Tel: (Killin 01567) 820462

**Festive Good Wishes  
to all customers**

## Window Cleaning

**0782 464 2344**

**Simon Raw**

Licensed  
Commercial &  
Residential  
Window  
Cleaner

**Killin**

[simon@raw1.wanadoo.co.uk](mailto:simon@raw1.wanadoo.co.uk)



the National Trust  
for Scotland  
a place for everyone

## Ben Lawers National Nature Reserve

### Technology shares Ben Lawer's secrets

Visitors to Ben Lawers can now discover hidden secrets of the area's rich cultural and natural heritage thanks to a new remote technology. An electronic 'Info-Point' has been installed at a layby on the A827 overlooking Loch Tay to provide wifi access to information about an often overlooked Scheduled Monument in the area. This preserves the history of human habitation on the lower slopes of Ben Lawers, which were once home to a thriving community of small farmers. The solar-powered Info-Point provides smartphones with details about the site and the conservation charity's hope to replant native tree species in the area, restore the 1700s landscape and bolster habitats for red squirrels in the area. The monument at Cragganester is made up of an extensive series of the remains of five farmsteads and associated field systems and roadways representing the improvement of the farming

landscape in the 1790s. There is no need for an app or phone signal as the solar power option means that it can be used at remote outdoor sites like Ben Lawers, where there is no infrastructure at all. The unit creates a self-contained 'local web' with wi-fi access, so that any nearby device capable of browsing the web can view and download the local information. There are several archaeological sites around Ben Lawers which the National Trust for Scotland is highlighting to visitors – the Kiltirrie Hidden History Trail is approximately 6 miles east of Killin and provides the opportunity to explore the remains of settlements from the 18<sup>th</sup> and 19<sup>th</sup> centuries. The site is free to visit and the walk takes around one hour to complete across rough and sometimes boggy terrain. Stout footwear is strongly recommended.

## New Board Member for Park



Our National Park has a new Board Member. There were seven candidates standing for nomination for ward 2 which covers Breadalbane and, following a close fought contest, Billy Ronald from Criannlarich has been appointed and will start his new role immediately. Board Members will be involved in a range of activities including achieving the National Park's objectives in conservation, visitor experience and rural development, taking decisions on planning and development, financial monitoring, representing the National Park Authority externally, acting as champions for the Park and the Authority, overseeing the development, approval and monitoring of the Corporate and Business Plans, also contributing to the leadership and strategic direction of the National Park. For more information visit [www.lochlomond-trossachs.org](http://www.lochlomond-trossachs.org)

### What's on Offer at Killin Library

DVD's

Now all 7 day hire

Films £2.50 and £2, children's £1.50



### Free Internet Access

COLOUR PHOTOCOPIER, PRINTING AND SCANNING AVAILABLE

Opening Hours:

Mon. : 10 - 1 & 2 - 5 ; Tue. & Fri: 10 - 1 & 3 - 7; Wed: 2 - 5

Learning and Internet Cafe with tutor support. Thur 11am- 3pm

Tel: 01567 820 571

E.Mail : [killinlibrary@stirling.gov.uk](mailto:killinlibrary@stirling.gov.uk)

## S. FORSTER ELECTRICAL

FOR

ALL YOUR ELECTRICAL NEEDS

REWIRES

SECURITY LIGHTING

SHOWERS

SOCKETS

INTRUDER & FIRE ALARMS

P.A.T. TESTING

ELECTRICAL CERTIFICATION

Call

Stuart on

01567 820031

or **SELECT**

07855496961

[Stuartfuzzy@btinternet.com](mailto:Stuartfuzzy@btinternet.com)



Scottish Decorators Federation

**BL DECORATORS**

6 LYON COTTAGES, KILLIN FK21 8TG

[www.bldecorators.co.uk](http://www.bldecorators.co.uk)

Established 1987

Specialists in Painting, Decorating, Paper-hanging and specialised wall finishes.  
Machine Ames Taping, Coving and Cornice work.  
Traditional plastering and ceramic tiling.  
Interior and Exterior / Domestic and Commercial.

**Property Maintenance**  
Gutters, downpipes, chimneys.  
Power-washing of walls, roofs, car-ports, conservatories and driveways.  
Joinery work.

Cherry-picker access available  
Liability Insurance

Tel: 01567820854 / 07887643831

Merry Christmas and a Happy New Year  
From Bobby, Karen, Robert, Hazel and Iona

"Long may you both rock!"

AIN HOOSE!

## Tarmachan Hill Race

The sixth Meall nan Tarmachan hill race took place on 10<sup>th</sup> October. Although the clouds were hanging low over Killin, higher up they parted and the day gave us perfect race weather and decent views. Seventy four runners started and completed the 9.5km course, with George Foster of Dundee Hawkhill coming in first in a time of 54.14. First female was Angela Mudge of Carnethy in 1.02.20. Angela is a world class mountain runner who has been plagued by injury for a couple of years now, so it's great to see her racing again. Four Swedes competed, with the race being the main reason for their visit to Scotland. Four regular Lochayside runners raced as well. Stephen Rawlinson was in second place after the rough descent from the Tarmachan ridge, but lost a couple of places on the faster paced run back along the hydro track to finish in a time of 55.31. Dan Watson was 17<sup>th</sup> in 1.03.37, Trevor Shaw 34<sup>th</sup> in 1.10.46 and Herbie McLean 56<sup>th</sup> in 1.21.02.

Support from the local community was amazing, with volunteers dealing with registration, car parking, timekeeping and the all-important refreshments back at Lynedoch after the race. Killin Mountain Rescue team did a superb job marshalling the race, ensuring that all runners got back safely (if not quite in one piece – the rough cobbles of the hydro track claimed a few skinned knees). Sincere thanks to everyone who helped. We also managed to raise just over £700 to split between the National Trust for Scotland for conservation work at Ben Lawers and Killin Mountain Rescue team. The end total was much higher because of the generous donations of prizes received from Killin Outdoor Centre, Killin Co-op and Salomon. Next year the race will be back on 8<sup>th</sup> October – hopefully with a few more red vests to be seen!

**Dan Watson**

**Highland Glen Travel**  
Your local private hire and tour company

Telephone Helen or George  
**07554195446**

**Private Hire**  
Any distance considered  
Airport, station and ferry journeys at competitive rates.

We would like to wish all our customers a  
**Very Merry Christmas and a  
Happy New Year**  
Thank you for your continued support.  
We are closed December 25th, 26th, 27th and January 1st, 2nd 2016  
Visit our website on [www.highlandglentravel.co.uk](http://www.highlandglentravel.co.uk) for full list of  
tours and a brochure

  www.facebook.com/highlandglentravel

# The Capercaillie

## BAR, RESTAURANT AND ACCOMMODATION

Relax by our log fire and view our beautiful garden by the River Dochart  
Excellent Service and Quality Homemade Food

Open all year and every day throughout the festive season

BREAKFAST / LUNCHES  
PRIVATE PARTY BOOKINGS  
HOME BAKING  
ALL DAY MEALS  
TAKE AWAY SNACKS, MEALS AND PIZZAS

Xmas Menu available from 4th Dec  
until 27th Dec 2015

New Year menu available from 28th  
Dec 2015 to 3rd Jan 2016



**Late Licence  
Till 3 am  
on  
HOGMANAY**



For Bookings Telephone Myra on: 01567 820355

Myra, David and Staff would like to wish all our customers a very Merry Xmas and All The Best for 2016

[WWW.CAPERCAILLIERESTAURANT.CO.UK](http://WWW.CAPERCAILLIERESTAURANT.CO.UK)



## Once in a red moon ...



On 28th September last people all over the world were excited to see a rare lunar eclipse. The Moon was at its nearest point to Earth so appeared much larger than usual - a so-called supermoon - and when the eclipse occurred the moon appeared blood red. Here in Killin this took place in the early hours of the morning and no everyone was prepared to stay up to see it. David Mardon, however, did and provided us with these photographs of a memorable event. The last time this phenomenon occurred was in 1982 and it will not happen again until 2033.

**TOMBRECK FARM SHOP**

In our shop we sell what we grow on the farm:  
**eggs, meat and fruit and vegetables in season.**

**PORK  
LAMB  
MUTTON  
WILD VENISON**

**HOME MADE SAUSAGES**

We grow organically without the use of chemicals.  
All our animals are Free Range.

Tombreck Farm is on the north shore of Loch Tay  
on the A827 Killin – Kenmore road,

Tombreck, Lawers, Aberfeldy, Perthshire PH15 2PB;  
Phone 01567 820500, mobile 07725 320546

[suemanning@tombreck.co.uk](mailto:suemanning@tombreck.co.uk)  
[www.tombreckfarmshop.com](http://www.tombreckfarmshop.com)

**HOME GROWN PRODUCE**



# Wanted

**LOCH TAY  
SALMON FISHING  
RIGHT TO RENT**

**WEST OR CENTRAL  
BEATS CONSIDERED**

**£500 PER SEASON,  
NEGOTIABLE  
MUST INCLUDE MOORING**

**CALL 07970 238424  
TO DISCUSS**



## 2nd Killin & District Scout Group Stirling & Trossachs.

### Beavers

*Beavers are aged 6-8 and meet every Tuesday in The Lesser Hall, Killin, from 6-7pm.*

We now have 5 new Beavers who will have undertaken their Scout promise and investiture into the Scout movement by the time you read this! This can be a very proud and memorable moment for Scouts of all ages and is one of things that sets us apart from other youth organisations. The Beavers have been making good use of the new items bought from the KAT grant especially the play parachute. This term should see them all having secured the Emergency First Aid badge too

**Stephen Rawlinson**

Beaver Leader  
07742 886918

killinbeavers@yahoo.com

### Cubs

*Cubs are aged 8-10½ and meet every Tuesday in The Lesser Hall, Killin, from 7:15-8:45pm.*

We have invested another 6 kids into the Cubs which is fantastic and we have 2 Cubs moving up to Scouts. We will be sad to see them go but excited to welcome our new Cubs. Cubs have been busy making their own Killin Heritage trail where we went out around Killin looking at all the buildings, taking pictures and learning all about what some of the buildings were used for in the past. We have also had fun using equipment bought with the KAT grant and hope to have many exciting nights to come. We will be working towards our Chef, Artist and Pioneering badges so some exciting times ahead.

**Charles Kemp**

Cub Leader  
01567 820835

the2ndkillincubs@outlook.com

### Scouts

*Scouts are aged 10½-14 and meet every Wednesday in The Lesser Hall, Killin, from 7-9pm.*

The Scouts have been practising their pioneering skills by creating shelters from broom handles, ropes and parachute, all bought thanks to the KAT grant. For a change from traditional Scouting activities, we have been learning how to create balloon animals and, for Halloween, perfected our face painting and pumpkin carving skills. One evening the leaders challenged the Scouts to an omelette competition. This involved Scouts choosing their own ingredients and cooking an omelette each, with varying degrees of success. The leaders were unsure about the addition of grapes to one omelette.

**Harriet Wishart**

Scout Leader  
07581 151442

2ndkillinscouts@gmail.com



**WE WOULD LIKE TO WISH ALL OUR  
PATIENTS  
A MERRY CHRISTMAS  
AND A HAPPY NEW YEAR.**

**We will close for our Christmas Holidays  
at 12:30pm on Wednesday 23rd December 2015.**

**We will re-open at  
9:00am on Tuesday 5th January 2016.**

**Aberfeldy Opticians**  
11 Bank Street  
Aberfeldy  
01887 829756

**Pitlochry Opticians**  
3/8 West Moulin Road  
Pitlochry  
01796 474004



**Andrew Anderson & Sons**  
Funeral Directors  
Est. 1969

**We are proud to offer a 24 hour caring  
and professional service to the local community**

**We are pleased to offer  
Golden Charter Pre-Paid Funeral Plans**

*"Creating peace of mind for you and your family"*

**A wide range of memorial stones are available.  
We can also clean and add further inscription to  
existing family memorials**

**For all enquiries**

**Tel: 01877 330398**

*"Stand Sure we will look after you & your family"*

Funeral Home, Glenartney Road, Callander, FK17 8EB  
Email: info@anderson-funerals.co.uk • www.anderson-funerals.co.uk

## Loch Tay Zyder



**Pulping the apples**



**Filling the cloth**



**Pressing the pulp**

In a recent item on BBC Scotland News, Clyde Cider was featured, it showed the process of cider making on a small basis. They use locally sourced apples and profits will be used to plant new orchards. On the other hand Loch Tay Zyder is made in the Dorset and Somerset way by Paul Linee at his home in Ardeonaig. The process involves equipment he brought with him when he moved here in 2010. The press and pulper date back to the late 18<sup>th</sup> century and he uses on average 60 sacks of apples per press. The apples are put through a cast iron pulper with granite rollers, the pulp is then placed in a

cloth or straw and stacked in the press. The layers of pulp are called cakes and when stacked are called a cheese. This is then pressed by lowering the beam, the apple juice is then collected and put into whisky barrels. Nothing is added to the apple juice. The fermenting process uses the natural sugars in the juice and on average takes four months to reach the stage where it is ready to drink. The production of this Cider is a community venture involving many locals including Andrew Craig, John Chisholm, Davy Fettes, Paul's wife Charm and many more. This venture continues the tradition of cider-making for the enjoyment of friends and the community and is not a commercial enterprise.

**Ron Allner**



**Filling the barrel**



All at The Old Smiddy & Courie Inn wish you a very merry and peaceful Christmas and a happy and prosperous New Year.

Come and "Courie" in with our latest Bistro and Bar menus

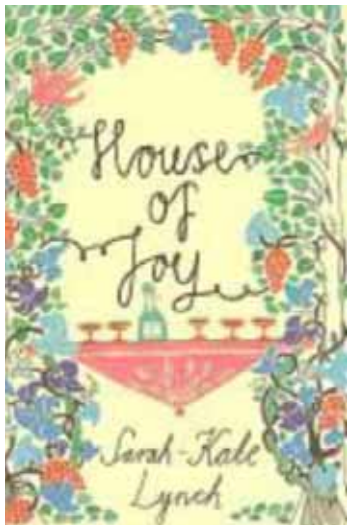
Or chill out at the weekend with our Brunch menu served between 11 and 3 Saturday and Sunday

We look forward to seeing you soon, give us a call or check our web site or facebook page

Tel: 01567831000







This book was a complete joy for me to read. It was recommended to us by Leigh Nelson who is the newest member of our group. As someone who has spent many happy long summers in the South of France, I found the writing instantly evoked the typical slightly dilapidated, musty French Chateau set amidst abundant vineyards.

The story is about three very different sisters who inherit the Chateau and vineyard when their distant neglectful father dies. He has left the vineyard in a poor state, a shadow of its former self, with none of the reputation left for which it had been known. The story charts their self-discovery, getting to know each other and re-discovering a world of fine wine-making for which the most unexpected person finds a talent.

It is beautifully written, has an element of magic and mystery to it and some fascinating and unexpected characters and twists. The author weaves each character into the story in such a way that it is easy to imagine what each of them is like. They are not all likeable characters (some quite unpleasant in fact) and some seem quite fantastic and almost magical.

I read that the author started her career as a journalist but far prefers making up stories rather than trying not to! She does it in this book exceedingly well. The story would make a very watchable film and, whilst it will never be to everyone's taste, it has been rightly described as one of the best kept secrets of the fiction book world. Thank you to Leigh for introducing us to this lovely story.

**Amanda Clark**

**Chapter 3 Book Club**

### Falls of Dochart Retirement Home

The Residents, Staff and K.C.T. Board members would like to thank the community for their invaluable support.

**We wish everyone  
A Happy Christmas and  
A Prosperous 2016.**

**Situation Vacant  
Fall of Dochart  
Retirement Home  
require a manager.**

**Details from Jim Cushley  
jimcushley@midlrx.com**

**Killin Sports Pavilion  
AGM  
Thursday 28th Jan 2016  
7.30pm  
All welcome**



### Christmas Festive Menu

From 1st December onwards

COME AND JOIN US AND CELEBRATE THE FESTIVE SEASON WITH FRIENDS AND FAMILY  
(minimum group 4 people)

#### STARTER

Winter vegetable soup,  
herb croutons

Smoked mackerel pate

Cheese soufflé with  
beetroot chutney

#### MAIN

Turkey roulade with a turkey and  
prune stuffing

Gammon roast with a Thistle Cross  
cider and cinnamon jus

Butternut squash risotto

Oven baked salmon fillet with a  
cranberry and thyme crust

Slow roasted pork belly with black  
pudding and cranberry jus

All main courses with seasonal vegetables

#### DESSERTS

Christmas plum pudding,  
brandy sauce

Winter chocolate brownie  
Sticky toffee pudding,  
butterscotch sauce

Traditional sherry trifle

Apple and blackcurrant  
crumble served with a dash  
of clotted cream and custard

Mini mince pies and tea or coffee

**£19.95 per person**

**Hogmanay Five Course Menu with live Ceilidh Band throughout the night,  
and stovies served after midnight £49.95 per person and children under 14 half price**

LIMITED AVAILABILITY

Please call or Email our Friendly Team to book any of our festive events

Tel : 01567 820296 [www.killinhotel.com](http://www.killinhotel.com) Email : [mail@killinhotel.com](mailto:mail@killinhotel.com)

## Ben More Glass Slide

In our last issue Kevin Byrne asked if anyone could identify the village in the black and white picture. Killin News photographer, Ron Allner, has identified it as Braval. The remains of the sheep pen can be seen at the front of the colour pictures. Most of the stones appear to have been taken to build a stone dyke beyond the bracken. Ledcharrie is shown mid way up on right behind the remains of the cottage.



Doune Woodyard Ltd  
Unit 2 Lochil Industrial Estate  
Doune  
Perthshire  
FK16 6AU

Tel: 01786 841204  
Fax: 01786 841122

E-Mail: [sales@dounewoodyard.co.uk](mailto:sales@dounewoodyard.co.uk)

Suppliers of Timber, Interior Finishes, Sheet Materials and Fencing  
Also a Large Selection of Hardware Supplies Available in our Shop

### RTA Plant Hire

Hire of Excavators 1-3 ton, Dumpers, Skid Steer Loaders,  
Cherry Pickers and Many Other Items  
Please Phone 01786 841121  
For Further Information and Availability  
Hire of 5 Berth Motor Home Now Available

## THE FABRIC STUDIO

Specialists in Design & Make Up of Curtains  
Blinds, Upholstery & all Soft Furnishings  
Huge Range of Modern & Traditional Fabrics  
Complete Curtain Service, including Free Measuring & Quotes  
Fabrics Brought to Your Home  
Friendly Staff, delighted to help & advise

**Drummond St, Comrie 01764 670921**  
**Mon, Tue, Thur, Fri 9.30 - 5.00 Sat By Appointment**  
**Mobile No : 07792 - 169253**

anderson  
something to smile about  
dentistry



"The professionalism  
and technical knowledge  
of the practice is exemplary...."

A.R. 2012



[www.andersondentistry.co.uk](http://www.andersondentistry.co.uk)

Tel: 01887 820 441  
[info@andersondentistry.co.uk](mailto:info@andersondentistry.co.uk)  
Taybridge Terrace, Aberfeldy,  
Perthshire, PH15 2BS

## ERIC McALLISTER CARPET FITTER "Tredaire"

Tel: 01567 820359  
Mob: 07971 677291

**SPECIALIST ON ALL  
FLOOR COVERINGS**

**SAMPLES DELIVERED TO  
YOUR HOME**

**Supplier of  
Carpets & Vinyls**

## PATRICIA WAITE

State registered chiropractor  
Tuesdays, Wednesdays and Fridays  
10am to 5pm

Specialising in joint and spinal  
care, and also using  
Applied Kinesiology for dietary  
and allergy problems

By appointment only at  
Offizone, Kenmore Street, Aberfeldy  
07808 223960  
(01887 820050 out of hours)



The group have been enjoying their walks this autumn in the stunning colours of the countryside. Most years we have an outing to Kenmore and take a walk in the Taymouth Castle Estate and this year was no exception. The group rounded off their morning at Karelia House for lunch.

The Strength and Balance sessions in the Killin Hotel are now being held in the larger dining room as the room

we were using became too small for the numbers attending. Designed with older adults in mind, they are held from 1.30-2.30pm on Wednesdays.

Walk in the Park will have their annual Christmas Lunch in the Capercaillie on Wednesday 16<sup>th</sup> December from Noon onwards. Everyone is welcome to join us so, if you haven't been able to walk with us for some time, we would love to invite you along. Booking is essential so please see a walk leader or me to pre-book your meal.

After 16<sup>th</sup> December both the Health Walks and the Strength and Balance sessions will have a break for the

winter returning on Wednesday 13<sup>th</sup> January weather permitting.

We look forward to seeing you all at the Christmas Lunch.

If you have any questions regarding joining any of our walks or exercise sessions please contact the Project Coordinator

**Cathy Scott**

tel. 01877 330055



cathy.scott@lochlomond-trossachs.org



**Schedule Wednesdays at 10.20am unless otherwise stated**

<b>Date</b>	<b>Meeting Place</b>	<b>Route</b>
2/12/15 (car share)	McLaren Hall Car Park	Glen Lochay
16/12/15	Capercaillie	Craignavie Road
		Followed by Christmas Lunch in the Capercaillie at noon – all welcome Please book lunch with a walk leader
13/1/16	Capercaillie	Winter Break Village Walk
20/1/16	Capercaillie	River Dochart and Old Railway
27/1/16	McLaren Hall Car Park (car share)	Golf Club Walk

**cathy.scott@lochlomond-trossachs.org tel. 01877 330055**

## Roof

Velux Windows & Fairco Windows

Single Ply Roofing - Profile Sheet Roofing

Slatting – Tile Roofs - Leadwork Felt and Fibreglass Roofs

## Building

Stonework – Brickwork Chimney – Stacks - Extensions

Roughcasting – Plastering Alterations – Loft Conversions

Masonry - Waterproofing Walls

Traditional Stone Work – Lime Pointing

Joinery Work and all General Building Work. Insurance Work welcome

ROOFING & BUILDING

MAINTENANCE

Free Pre-Winter checks on all Roofs

Free Estimates  
and Advice  
One call...  
Does it all !!

Tel: 01887 858727  
Mob: 07876 713 123  
Freephone: 0800 747 1687  
19 Ruthvenfield Road  
Inverlomond Industrial Estate  
Peebles, PH11 3EE  
[arb@hotmail.co.uk](mailto:arb@hotmail.co.uk)





# McLaren High School

## World Challenge Project Ghana

The team were dropped off at the school on Sunday afternoon and Build Up Day had begun! After a full kit check, tent pitching and an overnight stay in the school library, we headed to Glasgow airport for 5am. As soon as the team arrived at the airport, the expedition was their

money into Ghanaian Cedi, buy a couple of mobile phones and try to haggle the price for a bus to our accommodation.

The next morning we drove through Accra on our way to the project site, stopping on the way there to pick up food and cooking supplies, the team had to navigate through crowds, decide what to buy, negotiate a fair price and try to fit in to life in Ghana. On arrival at our project, we were greeted with the biggest welcome any of us had ever experienced. The school children knew we were

and vegetables over the course of the trip! The teachers very kindly cooked for us on a few occasions, a popular dish being 'Banku,' a traditional Ghanaian dough which was served with a delicious tomato stew

The next morning the real work started. Our task was to build another classroom block at the school. The team had to go and buy their own building supplies and arrange delivery. Then everyone got stuck in, bricklaying, making cement, plastering and generally helping out.

We paid a couple of Ghanaian builders to help and they worked extremely hard and were helpful in showing the team what to do. We managed to finish everything but the roof, but, with the extra money we had left, paid the builders to complete the job.

The school was in the grounds of a church and we got to experience various church services whilst we were there - including an overnight service which involved singing that went on to around 5am!!!

The teachers measured the whole team and on the last day presented us with dresses and shirts that they had had specially made for us. They showed us some Ghanaian dancing and we got them up Ceilidh dancing too. The kindness they showed us was amazing.

It wasn't all work, though. We had a couple of trips to the beach at the weekend and also visited two old slave forts and learned about the history of Ghana. We took a trip to Kakum National Park where we slept in a treehouse and conquered the canopy walkway - a series of rope bridges suspended 50m above the ground!

**Miss Wood**  
Teacher in Charge



World Challenge Project Ghana - Lewis Mccaffery killin back row 2nd left.

responsibility. They had to organise check in, collect money and lead us to the correct departure gate. A couple of plane journeys, a successful navigation through Amsterdam airport and we arrived in Ghana.

The heat and humidity were instantly apparent. Before the tired team could make their way to the guesthouse, they had to change

coming and were jumping with joy when our bus arrived. They immediately ran over to hold our hands and hug us and help us with our bags. The teachers were so friendly and welcoming and happily showed us around their school.

Cooking that first evening was quite an experience. We had one pot and some charcoal to make a meal for thirteen people. We ate a lot of rice

## Marieke McBean Photography

Based in Garth - Fortingall

All professional photographic work undertaken

Wedding packages from £450

www.marieke.co.uk  
info@marieke.co.uk  
t. 07762 689 612



## Learn To Sing



Why not contact  
**Franny Morrison**

An experienced, professional singer and teacher.

All ages welcome

01567 829048

0780 2929796



**John Morris Safety Ltd**  
Specialist Chartered Safety & Health Services  
Chartered Safety & Health Practitioner  
**QHSR**

**Have you checked your smoke alarm?**



Don't let fire ruin your Christmas and New Year

**Have a safe and Happy Christmas**

Craigville Farmhouse, KILLIN, Perthshire, FK21 8SJ  
Tel: 01567 820787 Mobile: 07896 314033 e-mail: john@johnmorrissafety.co.uk

## Killin and Crianlarich Nursery

In Crianlarich the children have been exploring the outdoor environment, going for walks through piles of beautiful autumn leaves. Absorbing the wonder of nature supports a child's sensory development; listening to the sound of the leaves underfoot, feeling them as they are crunched in the hand and the smell of damp wood and grass.

In Killin, the children are participating in their daily mile run or walk around the school playground to support their development of health and wellbeing. This not only supports their physical fitness, but also helps with concentration and a 'feel-good' factor.

In October, a coffee morning was held to raise money for Macmillan Cancer Research. The children baked cakes, the parents and staff donated baking and time, and the parents group supported the event by serving teas and coffees. A sum of £250 was sent to the charity.

To celebrate the festival of Halloween the children in both nurseries had a rhyme time and activities with family and friends. The Killin older children walked around the village in fancy dress looking for Pirate Pete's treasure!



## Killin SWI 2015-2016

On Thursday 1st October members of the Killin SWI met at the Lesser McLaren Hall for their first meeting of the season. A good turnout was welcomed by President Lynne Ferguson and it was nice to see quite a few new members at this meeting.

A very entertaining talk with lots of pictures by our local paramedic, Jean Faichney, about her many interesting jobs, as well as a first aid competition, was enjoyed by all.

This season's SWI syllabus includes a wide variety of talks and presentations like: Travels with the B.B.C. by Margaret MacIver. Beauty Night by Susan Fraser, Wendy Simpson and Roanne Bickerton on December 3rd. On February 4th we will visit the Real Food Café in Tyndrum for a presentation about Sustainability of fish stocks, as well as the preparation of award winning fish and chips. On March 3rd we will have a presentation on Spinning and weaving by Alicja Fraser and Enid Sutherland, crafts which have made a real comeback.

The last meeting of this season on 7th April is titled: My Lace Journey by Margaret Milligan.

On Wednesday 16th December the Killin SWI hosts the Children's Christmas Party in the McLaren Hall

On Saturday 9th January we have our Birthday Lunch in the Killin Hotel to celebrate 92 years of Killin SWI. So why not give it a go and join us at any meeting in the Lesser McLaren Hall beginning at 7.30pm. Enjoy a cup of tea during the interval and perhaps win a prize in our raffle.

A different way of spending your evening!

**Désirée van Doorn**  
Killin SWI Secretary

## Bridge End Mill

unbelievable value

Christmas gifts and  
decorations

Quality cards  
8 for £1.99



Ness Bags & Purses  
Jewellery

Charlie Bears



Large selection of half price Border Fine Arts

Woodwick and Yankee candles  
Quality Giftwrap 10 sheets only £1.99  
Aran Traditions Hats and Scarves

**We wish all our customers a  
Merry Christmas and a Happy New Year**

Open 10 am-4.30 pm 7 days a week  
Falls of Dochart, Killin FK21 8XE  
01567 820508 [www.thepresentshop.co.uk](http://www.thepresentshop.co.uk)



‘PARADISE IN THE HIGHLANDS’

*Whoo hoo... we're finalists!*



[www.portnellan.com](http://www.portnellan.com)



[portnellan@gmail.com](mailto:portnellan@gmail.com)



01838 300284



[portnellan](https://www.facebook.com/portnellan)



[@portnellan](https://twitter.com/portnellan)



# Obituaries

## Flora Fraser (nee Thomson) 1920–2015.

Flora was born on 28<sup>th</sup> September 1920 in Muasdale, on the Mull of Kintyre. She was the third youngest of twelve children and was the last surviving member of her family. Her parents were Jessie and Duncan Thomson and her father was a fisherman and ferryman. Flora was educated locally and won a scholarship to Campbeltown Grammar School but due to the financial climate at the time, her parents were unable to accept this on her behalf. She took a job in the post office in Clachan and later in Fearnan where she met Ian Fraser and they were married in 1943. Their first home was in Glasgow, where Ian worked in the shipyards as a plumber.

In November 1944, Alistair was born in Glasgow and the following year the family moved to Laburnum Cottages in Killin. Ian went into partnership with his father, forming the business AC Fraser and Sons, with premises in Killin and Kenmore.

Patsy, their second child, was born in 1947 and in 1952 the family moved to Ballechroisk. Gordon (or Jock, as he was affectionately known) was



born in 1954, completing their family. Flora devoted her life to raising her family and her kind and loving manner nurtured her children, providing many fond memories of family time spent together. As they grew up, Alistair emigrated with his young family to Canada, Patsy moved to Edinburgh to study and Jock settled in London.

Flora and Ian lived on in Ballechroisk, where they enjoyed life with their many dogs and cats, spent time in their beautiful garden and welcomed their expanding family with open arms.

In 1995, Ian died suddenly and unexpectedly and Flora's world changed forever. She remained fiercely independent and at the age of 76, acquired Brucie, a Jack Russell, and they enjoyed seventeen years of companionship, becoming well known around the village where many stopped to talk to them during their walks.

In 2012, we lost Jock to prostate cancer and this had an enormous impact on Flora's health and well-being. After years of independence, she began to struggle at home but was aided enormously by very kind neighbours and friends, including Kay and Ian Riddell who assisted her on many occasions.

In early 2014, Flora fell and broke her wrist, resulting in a prolonged stay in hospital. During this time, Brucie became ill and sadly he died on the day that she came home. After this further severe blow, it quickly became apparent that she was no longer able to manage at home and Flora moved into the Falls



### Do you need an affordable home ?

Rural Stirling Housing Association aims to support local communities by providing quality homes at affordable rents for families, couples and single people in housing need.

We currently have over 550 rented houses and flats. Around 50 of these become available for rent each year. We hope to have new properties in Strathblane and Balmaha soon and currently have properties in the following communities

Aberfoyle	Deanston	Gartmore	Lochearnhead
Balfron	Doune	Killin	Strathyre
Buchlyvie	Drymen	Kinlochard	Stronachlachar
Callander	Gargunnoch	Kippen	Tyndrum

We may be able to build in other communities in the future – please let us know to if you want to live in a village that is not listed above. Information on local housing need and demand helps us plan for the future.

If you are interested in renting one of our properties when they become available please contact us:

**Rural Stirling Housing Association**  
Stirling Road, Doune  
FK16 6AA  
Telephone: 01786 841101  
Email: [enquiries@rsha.org.uk](mailto:enquiries@rsha.org.uk)  
[www.rsha.org.uk](http://www.rsha.org.uk)

Registered as a Scottish Charity No SC037849



**andrew baird**  
**OPTOMETRIST**

Optician & Contact Lens Practitioner

49 Main Street, CALLANDER

01877 330084



### COMPLETE PAIRS

Single Vision from £59

Bifocals from £79

Varifocals from £129

**FREE** Digital Retinal  
Photography available as part  
of your NHS examination

**FREE** NHS EYE  
EXAMINATIONS FOR  
ALL UK RESIDENTS

### OPENING HOURS

Monday, Tuesday, Thursday, Friday & Saturday

9am – 5pm

Closed Wednesdays and Sundays



of Dochart Retirement Home in Spring 2014. Surrounded by the amazing care of the wonderful staff there, Flora was happy and settled for several months before she sadly had a large stroke in June 2015. As her health continued to deteriorate, she was treated with compassion and tenderness by the staff of the home and the healthcare team in Killin Medical Centre, who provided amazing care in the last few weeks of her life. Flora died peacefully with her family around her on 25<sup>th</sup> September 2015, three days before her 95<sup>th</sup> birthday. My Granny was an amazing lady who left a legacy which is now spread around the world, from Canada to Australia. She had 9 grandchildren, 14 great grandchildren and 2 great

great grandchildren and every one of us was loved and cherished. We all have enormously fond memories of Killin and remember crying when we were leaving our Granny and Grandad! Her kind and loving manner will live on in our memories and our hearts and she will be very sadly missed and never forgotten. Alistair, Patsy, Geraldine and the family would like to express grateful thanks for the many cards and flowers and for the generous donations of £440 to the Falls of Dochart Retirement Home raised at the funeral. Our heartfelt thanks also to the wonderful staff at Killin Medical Practice and to the fantastic team at the Falls of Dochart Retirement Home.

**Lynn Dickson**

### **Audrey Campbell 1921-2015**



Audrey was born in Bassingham, Lincolnshire, the third of five children, with two brothers and two sisters. In her early twenties she was a "lumberjill", felling trees for the war effort. She loved the strenuous outdoor work which she later credited for her longevity. Ten years ago in Aberfoyle, she proudly attended a memorable day at the unveiling of a statue in recognition of the lumberjills' huge contribution to the war effort.

Living next door to Swinderby airfield, it was no surprise she married an RAF man ("Mac" to her family). In 1946 they came to Dad's home in Morenish, with baby Irene and later were delighted to move into a new Swedish house at 4 Ballechroisk, where Ewan and Morag were born in 1950 and 1954 respectively. Coming from very flat countryside, Audrey was in awe of the surrounding hills and often said she felt protected by them. Many locals will remember her years in the Co-op, enjoying their banter, whilst working on the till. Later, in Stewart Road, she was a familiar sight pushing her "Rolls Royce" up Manse brae, usually from the Capercaille, having enjoyed an afternoon amongst friends. Mum remained young at heart and liked to share a cheeky joke or funny story with all the family, especially her grandchildren and great grandchildren. She will always be remembered with love, affection and a smile.

Thank you to all who attended her funeral and for your generous donations, totalling £520, which were given to the Falls of Dochart Retirement Home, where she spent the last four years being well looked after. Special thanks to all the staff for keeping her comfortable.

**Pamela, Irene, Ewan and Morag**

### **John Blyth 8.12.35-3.9.15**

Sadly John passed away at the beginning of September. The family would like to say how much they appreciated all their friends from Killin who attended his funeral at Perth Crematorium. It was lovely to see how many had come to show their respects.

Thank you.

**Kathleen, Jane and Stuart**

## BARHAUL

**Haulage**



**Groundworks**



**Plant Hire**



**Building Supplies**



**Scaffolding**



**Specialist Equipment**



**Van Hire**



**Langley Centre, Dunkeld Road,  
Aberfeldy, PH15 2AQ**  
**Tel: 01887 820 022**  
**enq@barhaul.com**  
**www.barhaul.com**



Relieve pain   Restore Activity

**Mairi Menzies**

Experienced  
Chartered Physiotherapists  
HCPC registered

5 Station Road, Callander (beside the Post Office)

Acupuncture   Manipulation   Sports Injuries   Back Pain   Joint Pain.

Tel: 01677 339 989  
www.callanderphysiotherapy.co.uk  
callanderphysiotherapy@btconnect.com

# Letters

## Park Information

One of the Park's duties is to inform and enhance visitor enjoyment of their visit to the Park. Why do they put out incorrect information? Three examples:

**1** My Wife, prior to our marriage, lived at Keilor and she is adamant that the Waterfall in Glen Falloch was always referred to as the Ben Glas Falls. The Park call it the Grey Mare's Tail. As every child knows, the Grey Mare's Tail is near the town of Moffat, 100 miles away!

**2** The Park refers to Lochdochart Castle as Rob Roy's Castle. The Castle burnt down in 1646 and Rob Roy MacGregor was not born until 1671.

**3** An Historic Scotland bureaucrat, hired by the Park to assess all listed buildings, reported that Lochdochart House was all built at the same time in 1825. However, in the central, older part, the interior walls are as thick as the outer walls, go right up to the apex of the roof and the fireplaces are on the interior walls. In the two Georgian wings, The interior walls are only one foot thick, go no higher than ceiling height on the first floor and the fireplaces are on the exterior walls.

Why are the park putting out this inaccurate twaddle? There is no shortage of true historical facts and correct names to tell a story about the park.

**John Christie of Lochdochart OBE**

## A great holiday

I spent most of August in Perthshire in and around Braco and Killin. It's the first time I had been back in Scotland for 20 years and I would like to thank all the "old locals" who made me feel so welcome. Special thanks to Rhoann and Tommy in Braco and to Sheena and David in Killin. What a wonderful holiday I had. The Killin show, the Edinburgh Tattoo and plenty of football with a great group of friends. A special coffee break at the Capercaillie, a family lunch at the Bridge of Lochay. It all added up to the best August I have had for a while. The weather was great and the countryside looked just as I knew it would, beautiful. I often think how lucky I am to live in Adelaide. It's a lovely city, but you in Bonnie Scotland have by far the friendliest people in the world. Thank you.

**Tommy Bickerton**

## Family Search

I am compiling a family tree and wondering if anyone knows any information about my grandmother Jessie Dewar, who is buried in Killin cemetery, or the whereabouts of any descendants in the family. She had four brothers:- Donald, Hughie, Duncan and John and four sisters - Margaret, Catherine, Elizabeth and Christine. Her father worked on the Breadalbane Estate as a deerstalker. Her mother was Margaret McCallum (1864-1935) and her father was John Dewar (1864-1936). They are all buried together in Killin new cemetery.

Any information will be gratefully received!

**Mrs L. Brown**

tel: (01786 823135)

## Railways - and Scam warning

I did so enjoy reading people's memories of the railway and am sorry I didn't add to them! My brother and I used to go up to Luib Station to collect the mail, taking it in turn to sit in the middle seat of the Landrover and change gear! Then Mr McQuarrie would allow us to hand the tablet to the engine driver.

The  
**BRIDGE of  
LOCHAY  
HOTEL**  
Traditional Scottish Inn

WITH OUR ROARING FIRES...

The Bridge of Lochay is one of the BEST places in the area to enjoy a friendly welcome, comfortable surroundings and GREAT food. **Open for Christmas Day lunch; contact us for a copy of our delicious menu. Advance booking essential.**



FOLLOW  
US ON:



**Hogmanay Gala Dinner Menu -** enjoy a superb meal in our Riverside Room before heading to the Falls of Dochart for the wonderful Annual Hogmanay Fireworks Display - ask for a copy of our Hogmanay menu

www.bridgeoflochay.com reservations@bridgeoflochay.com 01567 820272  
ABERFELDY ROAD, KILLIN, FK21 8TS BOOKING ADVISABLE TO AVOID DISAPPOINTMENT



## Letters

On another matter. I would like to warn people of a scam that is doing the rounds. A company called PC Midas Touch ring to tell you that your Windows ID licence number has been hacked but for a sum of money they will sort it all out for you. They are aggressive, persistent and use bullying tactics. I have reported them to Trading Standards who have brought them to the notice of the Police.

**Emma Paterson**

### Shoebox Appeal

A big thank you to everyone who donated a filled shoebox or handed in items for the boxes. A special thank you to all the knitters who knitted wonderful items for babies and toddlers.

28 boxes and 2 carrier bags of things were collected at the Library plus 20 boxes and 5 full carrier bags from Killin and Crianlarich Schools.

This was a super amount especially as there has been lots of other collections going on. The shoeboxes give great pleasure from young to old as for most this will be their only gift. Again thank you.

**Kay Riddell**

### Refugee Collection

A big thank you to everyone who responded to the Refugee Collection. Thanks to you all, a car and trailer full of tents, sleeping bags, toiletries and winter clothing went to Edinburgh for onward shipment to Calais and Serbia at the end of October.

Special thanks for help from Katy and Tommy at MacGregors, Rev Johnston and Phil at the Church of Scotland, and Les for all the sorting, bagging, lifting and transporting and to Kay for all her support.

If anyone would like to help more Re-Act, Refugee Action Scotland, has a good website with information on what you can do to support the tens of thousands of people who have fled their home countries and risked their lives in a desperate attempt to find safety.

**Suzanne Player**

### Season's Greetings

We wish you all a happy Christmas and a prosperous and healthy New Year.

**Burnbank, Killin**

## Killin Craft Group Annual Christmas Sale

The Killin Craft Group are holding their annual Christmas Sale on two days this year. Monday 7th December 7.00-9.00pm and Tuesday 8th December 10am-12noon at Breadalbane House, Killin. Mince pies, a raffle, mulled wine, tea, coffee and cakes will be on offer alongside the crafts, which have all been made by the talented members of the group. Lots of Christmas goods for all ages will be for sale so come along - you will not be disappointed!

## ALLY BAIRD LTD.

Building and Roofing Services

**ROOFING • EXTENSIONS**  
**MAINTENANCE • RENOVATIONS**

No job too small, free estimates and all work is fully guaranteed

**M 07833 312346 T 01877 330389**  
**E ally.baird@btinternet.com W www.allybaird.co.uk**

Registered Office: 25 Lagannoch Crescent, Callander FK17 8DS, Scotland



**FMB**  
The sign of building quality

## Julie Baird Pilates

Pilates is a corrective form of exercise, targeting the deep postural muscles that support the spine and lower back, building strength from the inside out. It aims to achieve a balance between strength and flexibility and plays a key role in injury rehabilitation and prevention.

**Pilates Mat Classes, 1 to 1 or Group Home Visits:**  
**Killin, Fortingall, Pitlochry and area.**

### Classes

Tuesday mornings - Pitlochry  
Wednesday afternoon - Fortingall  
Wednesday evening - Killin

For details of class times and prices: julesbpilates@yahoo.co.uk  
Tel: Julie **07963 088 112** (Body Control Pilates Instructor)



Planting the Seed



**CRUACHAN**  
LANDSCAPE DESIGN AND CONSTRUCTION LTD

From initial consultation and full colour design to complete garden build... all under one roof!



Full design package  
Stone work  
Timber work  
Garden features  
Artificial lawns supplied & laid  
Turf supplied & laid  
Drainage

[www.cruachanlandscaping.co.uk](http://www.cruachanlandscaping.co.uk)

**01786 841 719**  
**01877 339 993**



**HTA**



The Association of Professional Landscapers



**TRUST MARK**



**BRADSTONE**  
Assured

## Big Learner Relay



### Big Learner Relay

Thanks to Bobby Lafferty, the members and visitors of Lodge Breadalbane St. Fillans No.815 for donating the collection of £82 from the November meeting to help sponsor a spot on my car as part of the Big Learner Relay in aid of BBC's Children in Need.

Isobel Downie

## Fire Service Fundraising



The Fire Service has been hard at work raising funds - more details in next issue



# TAY ROOFING and BUILDING Ltd.

## 10% discount with this Ad.

- Slating ● Tiling ● Chimney ● Work
- Roughcasting ● Leadwork ● Cement Work ●
- Guttering Repaired or
- Replaced ● Velux Windows Supplied and Fitted ●
- Moss Removal on Roofs and Garages ● Flat Roofs
- Repaired or Replaced ● General Building Repairs and
- Maintenance ● Insurance Work and Storm Damage



Tel: Aberfeldy 01887 858610  
Mob: 0787 186 1235

**VELUX®**

Free Estimates  
and Advice

Distance no object • 7 day service • Local & Reliable



A recent promotion by C&WP to raise awareness of the U3A coincided with the NHS using the media

to promote awareness of ill health due to loneliness and our display stand at Callander's GP surgeries on the day of the Flu Vaccinations drew much interest. Members of our U3A took turns to answer queries and hand out leaflets, timetables and membership forms. The pharmacy staff initiated the idea of putting small information flyers in with every prescription bag for older patients and as a result we have recruited new members. Other village surgeries were leafleted on their Flu Vaccination days and the Buchlyvie Pharmacy is also adding flyers to prescriptions.

Spanish conversation is a new group recently started and well attended, as is the newly re-formed 'Singing for Pleasure' group.

The Scottish History Group organised an outing to the Battle of Bannockburn Experience and the Poetry Group went to see the new film of 'Under Milk Wood'. At the time of writing we are looking forward to a talk on 'Winter Driving' by Angus Maciver of the Institute for Advanced Motoring and plans for the Christmas Lunch at Venachar Lochside have been finalised. Details of the menu have been circulated to members but the nature of the musical entertainment on the day is to be a surprise.

We would like to wish all members of C&WP a very happy festive season and look forward to new ventures in 2016.

**Marguerite Kobs**

## Strathyre Music Festival

The Festival will be back again for a 4<sup>th</sup> year in 2016 hosted by local band Balvaig.

A unique Community event designed to showcase a range of Folk/Blues/Rock/Jazz and Country music.

A FREE to access Festival Market Place will be in the Village car park outside the Village Shop. The Festival promises to be one of the best yet. Tickets are priced at £5.00 per day and can be purchased either on the day or from the Village Shop.

Any local bands/musicians interested in performing contact

mike@balvaig.co.uk

For further information and updates visit [www.balvaig.co.uk](http://www.balvaig.co.uk)

Find us on facebook or follow us on twitter

**Mike Keeney**

Chairman Strathyre Music Festival



U3A Recruiting



### GAULDS FUNERAL DIRECTORS

**Independent Family Business**  
**Helping bereaved families for over 20 years.**

Pre paid funeral plans in association with Golden Charter.

**Crieff 01764 656567. Aberfeldy 01887 820436**

Addison Terrace, Crieff. PH7 3AT.

20 Bank Street, Aberfeldy. PH15 2BB

**[www.gaulds.com](http://www.gaulds.com)**

### Strowan Woodland Cemetery

The only Greenfield Cemetery in Perthshire for more information  
phone 01764 656567

Web site:- [www.strowanwoodlandcemetery.info](http://www.strowanwoodlandcemetery.info)

## Cruachan Restaurant

Party Menus available

To Book Phone

**07768 588713**

**01567 820302**



*Christmas Greetings  
to all our customers.*



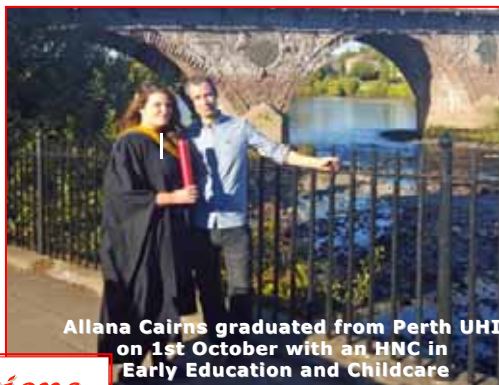
## FLAT FOR RENT

Fully refurbished 2 bedroom, large sitting room with open fire, central heating, underfloor heating in bathroom. Contact Kate Forster Killin Outdoor Centre 01567 820652





**Jock and Hazel Guild  
celebrating their  
Golden Wedding Anniversary**



**Allana Cairns graduated from Perth UHI  
on 1st October with an HNC in  
Early Education and Childcare**

## *Celebrations*

### **May Wedding at Dalerb**

On 16 May 2015, beside the river Dochart, Matthew and Callum's mum and dad, Michelle Butcher (eldest daughter of Anthony and Margaret Butcher, Kirkcaldy) and Richard Morris (son of John and Jennifer Morris, Craignavie Farmhouse) got married. The weather proved challenging but guests had been asked to bring wellies and umbrellas! Just as the happy couple were saying their vows, the sun broke through to a cheer from their guests and the umbrellas came down. Special thanks to Kevin and Linda FitzGerald for their friendship and kindness and for the use of their garden for this memorable celebration.



**Monachyle  
MHOR**  
Award winning hotel and restaurant.  
Chic rooms, open fires, stunning location.  
Open all day, walkers welcome.  
Balquhider FK19 8PQ 01877 384622

**MHOR Fish**  
Fish & chip shop & seafood cafe.  
75/77 Main Street, Callander  
FK17 8DX 01877 330213

**MHOR  
to your Door**  
From fish & chips to fine dining,  
from private to corporate events.  
marketing@mhors.net 01877 384622

**MHOR 84**  
Roaring fires, great food 8am - 9pm  
Live acoustic roots music 7.00 pm Thur  
Kingshouse, Balquhider  
FK19 8NY 01877 384646

**MHOR Bread**  
Artisan bakery & tearoom  
8 Main street, Callander  
FK17 8BB 01877 339518

Monachyle MHOR Hotel / Farm  
Loch Lomond and the Trossachs National Park  
**MHOR**  
on the map...  
MHOR Bread  
**www.mhors.net**



## Killin Breadalbane Angling Club

Members of the Killin Breadalbane Angling Club got together on Sunday 18 October to gather litter from the shores of Loch Tay and the head of the loch area. Several Boats were used and other walked around the head of Loch Tay. Stirling Council kindly supplied bags and litter pickers, and the club supplied gloves.



Left to Right - Jonny Campbell, Iain Campbell, Donald McLarty, Grant Tigwell, Iain Downie, Richard MacPherson, Iain Watson, Roisinn McLarty

## Mobile Libraries

### Tyndrum/Crianlarich Fortnightly Fridays

Dec 4, 18, Jan 16, 30

### Crianlarich

Willow Square 11.50-12.15  
Glen Falloch Road 11.30-11.45  
Police Station 10.45-11.25

### Tyndrum

Station Road 1.30-1.50  
Clifton 1.55-2.20  
Mansefield 2.25-2.50

### Glen Lochay/Ardeonaig Fortnightly Mondays

Nov 30, Dec 14, 28,  
Jan 5, 19, Feb 2

Glenlochay 10.50-12.30  
Ardeonaig 2.00-2.45

### Perth and Kinross Fortnightly Tuesdays

Dec 1, 15, Jan 6,  
Jan 20, Feb 3

Tombreck 16.40-17.00  
Lawers 18.10- 18.25

Jan & Feb dates probable  
but not confirmed



## Gatehouse Nursery

December Open 7 Days 10.00am - 5.00pm

Holly Wreaths Fresh Christmas Trees  
Festive House Plants

National Garden Gift Vouchers Sold and Accepted

Large Selection of Wild Bird Food, Peanuts & Feeders  
Red Squirrel Food & Feeders

Tel: 01887 820472

www.gatehousenursery.co.uk

Gatehouse Nursery is situated 2 miles South of Aberfeldy on the Crieff Road (A826)

## The Golden Larches



Licensed Restaurant with B&B rooms

Winter Hours:

Friday 10-3pm then takeaway from 5-7pm  
Saturday: 12noon - 8pm  
Sunday: 12 noon - 8pm

Balquhiddier Station, Lochearnhead, FK198NX

Tel No.01567 830262 Mob No. 07872 527741

www.thegoldenlarches.com

email: info@thegoldenlarches.com

Follow us on



Friday night is take away night at

### The Golden Larches

Open every Friday between 5pm and 7pm  
all winter\* for take away food.

New Take-away menu

10% off

Cut out this coupon and present it at the  
time of ordering.

\*One coupon per order. Coupons only valid on Friday night  
from 5pm-October 2015 until 6th March 2016

Housekeeping included

## Rob Roy

HOMES



Specialist in the design  
manufacture and supply  
of timber frame homes  
and buildings

**Rob Roy Homes**

Comrie  
Perthshire  
PH6 2LB

Tel: 01764 670424 Fax 01764 670419

E mail: mail@robroyhomes.co.uk

Website: www.robroyhomes.co.uk

37 years of quality value and service

## Local Planning Applications

### National Park

**11 September**

**Proposal:** Construction of disabled access ramp

Location: 16 Ballechroisk Court Killin

Applicant: Trust Housing Association

Application Type: Householder

Planning Permission

Decision: Pending Decision

**18 September**

**Proposal:** Amendment to

2009/0249/ECN to re-route pipeline

and retain permanent access track

spur to intake

Location: Ben Glas Hydro Glen Falloch

Applicant: Ben Glas Power Ltd.

Application Type: Detailed Planning

Permission

Decision: Pending Consideration

**29 September**

**Proposal:** Construction of 330m

access paths to hill top of community

woodland

Location: Network Of Trails South East

Of Village Of Crianlarich

Applicant: Strathfillan Community

Development Trust

Application Type: Detailed Planning

Permission

Decision: Approve

**1 October**

**Proposal:** Amendment to Condition

No. 4 and removal of Condition No. 5

of planning permission 2013/0047/DET

for the construction of a hydro scheme

Location: Ledcharrie Farm Crianlarich

Applicant: Mr Henry Patterson

Application Type: Detailed Planning

Permission

Decision: Approve

**2 October**

**Proposal:** Erection of extension to

dwellinghouse

Location: Capercaillie House Main

Street Killin

Applicant: Ms Myra Patterson

Application Type: Householder

Planning Permission

Decision: Pending Consideration

**12 October**

**Proposal:** Conversion to form 4No.

bedrooms & 15No. staff

accommodation rooms

Location: Stagger Inn Crianlarich

Applicant: Inverarnan Inns Limited

Application Type: Listed Building

Consent

Decision: Approve

**23 October**

**Proposal:** Variation of condition

No.9(b) of planning permission

2014/0258/DET to increase the

allowed delivery times

Location: Acharn Forest Killin

Applicant: Rodney Potts

Application Type: Detailed Planning

Permission

Decision: Pending Consideration

**31 October**

**Proposal:** Erection of electricity grid

connection kiosk and undergrounded

private wire in connection with

AlltEssan Hydro Scheme

Location: AlltEssan Hydro Crianlarich

Applicant: Mr Peter Christie

Application Type: Detailed Planning

Permission

Decision: Pending Consideration

**Perth & Kinross Council**

**21 September**

**Proposal:** Modification of permission

15/00598/FLL (Alterations to

dwellinghouse and associated works)

revised design and variation conditions

3 and 4 (access)

Location: Briar Cottage Fearnan

Applicant: Mr And Mrs Davidson

Application Type: planning permission

local

Decision: Awaiting decision

**5 October**

**Proposal:** Erection of

telecommunications pole, associated

microgeneration equipment and

associated works

Location: Land 90 Metres North West

Of High Creagan Killin

Applicant: AB Internet Ltd

Application Type: planning permission

local

Decision: Awaiting decision

**5 October**

**Proposal:** Erection of

telecommunications pole, associated

microgeneration equipment and

associated works

Location: Land 800 Metres North East

Of Carie Farm Bungalow Lawers

Applicant: Miss Rachel Faulkner

Application Type: planning permission

local

Decision: Awaiting decision

**5 October**

**Proposal:** Erection of

telecommunications pole, associated

microgeneration equipment and

associated works

Location: Land 500 Metres North West

Of Balbeg Farm Hydro Lawers

Applicant: AB Internet Ltd

Application Type: planning permission

local

Decision: Awaiting decision

**7 October**

**Proposal:** Erection of a dwellinghouse

(in principle)

Location: My Ben Rye Fearnan

Applicant: Mr Jamie Stewart

Application Type: planning permission

in principle local

Decision: Awaiting decision

**21 October**

**Proposal:** Extension to holiday let

accommodation

Location: Ben Lawers Rest Craggantoul

Farm Lawers Aberfeldy

Applicant: Craggantoul Farm

Application Type: planning permission

local

Decision: Awaiting decision

**Stirling Council**

**5 October**

**Proposal:** Installation of an Eco-PoP

consisting of a small telecoms mast

with a 10m timber telegraph pole,

hosting up to 5 antennas and powered

by solar panels and a windcharger

Location: Land Some 725 Metres

South East Of Burn Bank Killin

Applicant: AB Internet Ltd

Application Type: Full

Decision: Pending Consideration

**15 October**

**Proposal:** To provide services, fittings,

equipment - rewiring of existing

electrical installation

Location: Moirlanich Killin

Applicant: The National Trust For

Scotland

Application Type: Listed Building

onsent

Decision: Approved with Conditions



**All Types of Electrical Installation  
Repairs & Maintenance**

Pennycross, Manse Rd,

Killin, Perthshire

Telephone: (01567) 820374

Mobile: 07767 398085

email: douglasmcrobbe@aol.com





# What's On in Killin and District

## December

- 2 Walk in the Park P26
- 3 SWI p28
- 4 Lazy Afternoon Ceilidh, Tyndrum p11i
- 5 Old Mill Christmas Fair p5
- 7 Craft Group Christmas Sale p33
- 8 Craft Group Christmas Sale p33
- 16 Walk in the Park p26
- 24 Bedding St. Fillan's Stones p5
- 26 Boxing Day Dip p7

## January

- 8 Lazy Afternoon Ceilidh, Tyndrum p11
- 10 Old Mill reopens p5
- 12 KCC meeting 7.30pm school
- 13 Walk in the Park p26
- 20 Walk in the Park p26
- 27 Walk in the Park p26
- 28 Sports Pavilion AGM

## February

- 4 SWI P28
- 5 Lazy Afternoon Ceilidh, Tyndrum p11

**Beavers**  
Tuesdays  
6-7pm  
Lesser Hall

**Beginners  
Sampler Quilting**  
Wednesdays 2-4  
The Old Mill

**Cubs**  
Tuesdays  
7.15 - 8.45pm  
Lesser Hall

**Badminton**  
Mondays & Tuesdays  
McLaren Hall  
Juniors P7 and up to 6-7  
Adults 7-10

**Choir**  
Usually Tuesdays  
Church 7.30pm  
phone Franny  
01567 829048

**Craft group**  
Tuesdays 10-12  
Littlecroft

**Junior Badminton**  
Mondays at 6  
Crianlarich Hall

**Internet Cafe**  
Thursdays  
Killin Library  
11am-3pm

**Indoor Bowls**  
First Monday of  
month 7.30  
McLaren Hall

**Meditation**  
Wednesdays 7pm £5  
Tyndrum Village Hall

**Softplay Club**  
Tuesdays  
Sports Pavilion  
12.30 - 2.30pm

**Scouts**  
Wednesdays  
7-9pm  
Lesser Hall

**Tiddlers & Toddlers**  
1st and 3rd Thursday  
Community Rooms  
10am-12 noon

**Tuesday Club**  
Tuesdays 2-4  
Community Rooms

**Tai Chi**  
Wednesdays 9.30-10.30  
£5 Tyndrum Village Hall

**Youth Group (Killin)**  
Tuesdays 7.30pm  
Sports and Social Club

**WRI**  
First Thursday of  
month in Lesser  
McLaren Hall

**Yoga**  
Fridays  
Big Shed  
10.30-noon

## Ads Index

A&B Services	8	Grooming Marvellous	17
Aberfeldy Opticians	22	Heartland Vets	13
Ally Baird	33	Highland Glen	20
Anderson Dentistry	25	Jane Watts	10
Andrew Anderson	22	Jasmine Beauty	17
Andrew Baird Optometrist	30	Jason Campbell	4
Andyman	5	John Lynch	9
ARB roofing	26	John Morris	27
Back Pain Clinic	4	Julie Baird Pilates	33
Barhaul (+single)	31	Killin Golf Club	4
BL decorators	19	Killin Hotel	24
Bridge End Mill	28	Killin Library	19
Bridge of Lochay	32	KP	16
Callander Physiotherapy	31	Learn to Sing	27
Capercaillie	20	Lix Toll	40
Catering by Carlotta	6	Mains of Taymouth	15
Charles Grant	10	Marieke McBean	27
Coach House Hotel	8	McLaren Leisure Centre	18
Cooper Cottages	17	Mhor 84	36
Courie Inn	23	Patricia Waite	25
Crianlarich Store	10	PFK Performance	11
Cruachan Landscapes (+single)	33	Portnellan	29
Cruachan Restaurant	35	Real Food cafe	7
Davidsons	12	RG electrical	9
Douglas McRobbie	38	Riverside Vets	11
Eco Carpet Cleaning	11	Rob Roy Homes	37
Eric McAllister	25	RTA Plant Hire	25
Escape in Killin	14	Rural Stirling Housing	30
Fabric Studio	25	S. Forster Electrical	19
Flat to Rent	35	Scissor Sister	5
French Duncan	6	Stitt Bros	9
Gatehouse Nursery	37	Tay Roofing and Building	34
Gaulds Funeral Directors	35	The Studio	18
Golden Larches	37	Tombreck Farm Shop	21
Graham Grant Decorating	38	Wanted Loch Tay salmon fishing	21
Grant and Welsh	18	Window Cleaning	18
Grants Laundry	38		
Green Welly	12		

## Recycling Centres

### Callander

**Monday-Friday: 5pm-8pm**  
**Saturday: 10am-2pm**  
**Sunday: Closed**

**Aberfeldy**  
**Tuesday and Thursday**  
**9am-7pm**  
**Saturday and Sunday**  
**10am-5pm**

**Crieff**  
**North Forr, Brioch Forr**  
**All Year**  
**Monday-Friday 9am-7pm**  
**Saturday & Sunday**  
**9am-5pm**





[www.lixtoll.com](http://www.lixtoll.com)

[www.lixtoll-isuzu.co.uk](http://www.lixtoll-isuzu.co.uk)

**ISUZU**  
THE PICK-UP  
PROFESSIONALS

## Season's Greetings From All At Lix Toll Garage

AUTHORISED DEALER  
OF  
FALKEN, BFG & GENERAL TYRES



**BFGoodrich**

**GENERAL TIRE**



Everything Land Rover and Isuzu, Sales, Service,  
Accessories, Hire & Parts.  
Lix Toll Garage Ltd Killin, Perthshire, FK21 8RB Tel:  
**01567 820 280**

Picture by  
Emilie Borgeaud