

KILLIN NEWS

KILLIN & DISTRICT COMMUNITY NEWSPAPER

June/July 2019 Issue 170 Price £1



Killin News

Editorial

We have now reached the halfway point in the year and with it comes another wonderful change of season. As I sit writing this, my bedroom window frames a pastoral scene of lush green hills and clear blue skies. Swallows swoop down from the eaves catching insects, and bumblebees dance around colourful garden plants. Such a sight is always inspiring, and yet bittersweet, as issues of the environment come to dominate news headlines once more.

April saw the hottest Easter on record – the same weekend climate change movement Extinction Rebellion staged a series of protests in London. The following week the Scottish and UK parliaments declared a climate change emergency, with the latter aiming to reduce carbon emissions by 80% by 2050. It is no surprise then that these issues have found their way into the local discourse. You will notice this crop up frequently in Issue 170, from forthcoming projects such as the Heart 200 and the new Glen Lochay electricity station, to eco-friendly gardening tips, moles and Ron Allner's butterfly photographs – a beautiful celebration of the area's biodiversity. Climate change is a heady topic for the Killin News, and this welcome newsletter will certainly not afford space for analysis, but we hope the issues addressed inside will encourage debate amongst yourselves.

June will bring the return of two of the year's biggest events: The Bob MacGregor Memorial Trials and Killin Music Festival. Although dirt bikes and bagpipes have little in common, both are guaranteed to be thrilling spectacles. As previous years have shown, tickets for the music festival sell fast, so hurry to book if you haven't already!

MG

Editorial Policy Statement

The Killin News is a free community newspaper produced and distributed every two months by volunteers to households and businesses in Killin and district. The aim of those involved is to produce an informative, accurate and entertaining journal for those who live, work and visit in this area. Letters and articles published in the newspaper do not necessarily reflect the views of the Production Committee and they reserve the right to shorten, edit or not publish any item. Contributions will be attributed to the author. Vested interests will be declared where applicable. Articles should be between 200 and 300 words, photos in high quality and the content should be original work relevant to Killin and environs. All personal emails are acknowledged by a reply. If you do not receive a reply please contact us by phone or drop the article in the office letterbox.

Production Committee

Judy Forster, Sylvana Ginella, Liz Howard
Susan Howard, Angus Inglis, Angus Kay,
Anneke Mayo, Chris Rose, Marion Strang

Photographer Ron Allner

Delivery Volunteers

Mary Anderson, Jim Beattie, Margaretanne Browne,
Ellen Cattenach, Isla Craig, Theresa Elliot (and James),
Lynne Ferguson, Tim and Ruth Fison, Tim Frost, Linda Frost,
Shannon Gillies, Elizabeth Hancock, Jillian Laurence,
Catherine Macmillan, Gavin Macnab, John and Jennifer Morris,
Billy Noble, David Pritchard, Kay Riddell, Moira Robertson,
Gordon Webster, the family at Rubble Cottage
and some committee members

Proofreaders

Margaret MacIver, Anne Rose, Lynne Ferguson,
David Paterson, Michael Gardiner

Web sites: www.killin.info and www.killinnews.co.uk

e-mail: editorial@killinnews.co.uk

adverts@killinnews.co.uk

Address: Morenish PLace, Main Street, Killin FK21 8UR

Office Phone : 01567 820014

pdf versions of the paper can be viewed on the Killin News website



DEADLINES

Issue 171

Advertising 5th July

Copy 12th July

Publication 24th July

Flyers 24th July

Index

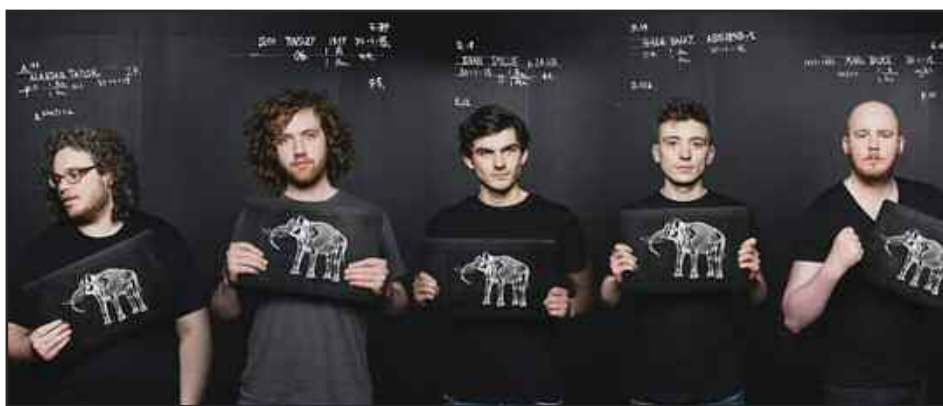
Ads Index	38
All Things Wild & Wonderful	20
Beauty of Spring	21
Car Scheme Update	24
Community Auction	37
Celebrations	36
Eco Friendly Weedkiller	20
Editorial	2
Frost Report	22
Heart 200	4
Jumble Sale Thank You	28
KAT	6
Killin Community Council	13
Killin Floral Association	29
Killin Highland Games	13
Killin Music Festival	3
Killin Primary School	14
Local Limericks	13
Local Planning Applications	37
McLaren High School	8
Mobile Libraries	39
Mole	11
Musings From The Manse	29
Nature Photos	18
Natural Beauty	38
New Year Firework	32
NTS Walks	30
Obituary	33
Old Mill Jumble Sale	28
Outdoor Bowling	23
Ploughing Competition	26
Proposed Electrical Sub-Station	25
Recycling Centres	39
Ron's Village Snaps	18
Scouts	34
Sports and Leisure Club	7
Strathfillan By The Way	12
Strathfillan Community Council	13
Thank You Killin	23
This Is Rubbish	38
U3A	24
Walk in the Park	19
What's On	39
Which Bin	39

Front Cover

View from Finlarig towards
Tarmachan Ridge
Photo Ron Allner

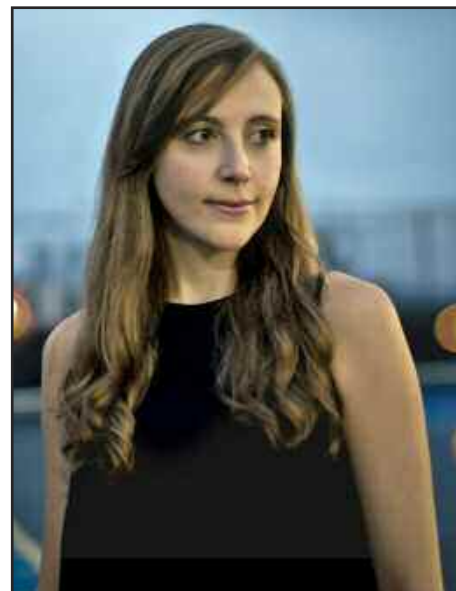
KILLIN 19 MUSIC FESTIVAL

Killin Music Festival has released the last batch of tickets for their fourth annual festival, which runs from Friday 14th June through to Sunday 16th June. Ticket buyers have ploughed through the previous batches, so the final limited release of tickets is expected to go fast. "It's a perfect distance away for a day trip and we get to sleep in our own beds when we get home!" said one 2018 festival goer. Another reveller from 2017 added "It's the best value for money music festival we have attended so far". The festival offers some of the best music Scotland has to offer in one of the most beautiful places in the Highlands. Although the line-up is impressive, the event is scaled down, so that performances are intimate, and the bar areas are sociable (no mile-long queues to get your drink!). There is something for all tastes – from a relaxed seated concert to bouncing night-time shows. All events are indoors or under cover, so there is no need to fear the



Elephant Sessions

temperamental weather. There is also a variety of free fringe events taking place during the weekend, including the second festival stage, competitions and a craft fair. Festival goers will have a chance to take in the stunning scenery and warm hospitality the historic area has to offer. For 2019 the festival welcomes the most exciting traditional music bands around, including headliners Trail West, Elephant Sessions and Siobhan Miller. This year sees different genres taking to the stage, including soul-funk phenomenon Tom McGuire and the Brassholes, and fresh indie band The 101. There will again be



Siobhan Miller

music in the Portnellan Tent from Headland, Dlù and Greig Taylor. Access to the tent is free of charge and perfect for a family day out. The tent will also be showcasing young talent from around Scotland. The full festival line-up can be found on the website. Hurry now to make sure you get your hands on tickets for a fantastic weekend of music and merriment in the heart of Scotland.

Tickets can be purchased at
www.killinmusicfestival.com



Trail West

ABERFOYLE ROOFING & BUILDING
FLAT ROOF SPECIALISTS

INSURANCE APPROVED CONTRACTOR
• EMERGENCY REPAIRS
GUTTERS REPAIRED/REPLACED
SLATING & TILING • NEW BUILDS
EXTENSIONS • RENOVATIONS

EXTENSIVE LIST OF REFERENCES AVAILABLE ON REQUEST

Call Now on: 01877 382 648
24/7 Emergency: 07739 690 196

GRAHAM GRANT DECORATING

07876772609
g.grant61@yahoo.co.uk

**Painting and Decorating
Ames Taping
Plastering
Tiling**

Window Cleaning
07824 642344
Simon Raw

Licensed Commercial & Residential Window Cleaner

Killin
simon.raw11@gmail.com

The Heart 200: A Bless

A new tourist route taking in Killin's top beauty spots is set to launch this June, in an ambitious effort to boost visitor numbers and local business.

The Heart 200 will link 200 miles of existing road networks around Stirling, Perthshire, Lomond and Cairngorm National Parks, and include attractions such as The Falls of Dochart and MacNab Burial Ground.

An interactive map pinpointing 29 key stops with sub-tour itineraries along the route will encourage users to stay longer and spend more in rural communities, claims Heart director Robert Cairns.

"We need visitors and the longer they stay the better," said Mr Cairns, owner of the Fortingall Hotel. "Footfall has increased in Stirling, but spend is down. We aim to spread out footfall and encourage visitors to stay 2 or 3 nights in each place and then return year after year."

He added: "We will also be promoting places of interest within 15 miles or so either side of the route – the benefit spread will be much greater than any other UK route."

Local opinion towards the initiative, which is marketed at young families and the over 50s, has been mixed. As a route used mainly for driving, there are fears that the Heart 200 will inherit the same problems as the North Coast 500.

A resident in Aultbea gave an account of life on the NC500 to Killin News, describing "huge motorhomes, massive amounts of litter, and human waste at the side of the roads."

Mr Cairns addressed these concerns saying: "The press thus far when comparing the NC500 and Heart 200 miss out one fundamental difference – the NC500 is predominately single track with almost no opportunities to turn right or left and additionally with minimal built infrastructure to support visitor traffic."

"As for large vehicles – the interactive map will identify roads considered unsuitable for coaches, caravans and large motor homes, for example, Coshieville through to Fearnan."

However, in a recent press release, Glen Lyon & Loch Tay Community Council revealed the extent of road safety issues along the route such as crumbling road edges and potholes. It stated: "Like the NC500, the roads in the Glen Lyon & Loch Tay Community Council area are mostly C-class – single track roads with passing places. There is definitely no huge scope for an increase in numbers."

"The Coshieville to Aberfeldy stretch – despite being a B-road, is actually in a much better state than the A827 which is one of the few direct East-West links in Scotland joining the A9 and A85."

The same report criticised the lack of public consultation, despite Perth & Kinross Council approving £50,000 investment in the project in February 2018. Susan Dolan-Betney, Chair of Glen Lyon CC, said: "Our own Councillors didn't even flag it up to us. The first the people here knew was in an article in The Courier."

Mr Cairns said that the project was not cast in stone and that public discussion would be welcomed after the route was launched. "Changes can be made to cover engineering works, congestion and local concern – communities come first," he responded.

The social and environmental impact of the route was another issue raised by locals. Tombreck residents Sue Manning and Wendy Graham argued that such 'driving routes' should be discouraged following Holyrood and Westminster's declaration of a 'Climate Emergency' last month.

Ms Manning said: "If money is available to promote tourism and travel in this area, it should be used to encourage low carbon travel such as walking, cycling, travel by horse and public transport, and should benefit locals and visitors alike."

Ms Graham suggested a new public transport route linking Pitlochry and Crianlarich train stations as an eco-friendly alternative to the Heart 200: "For these people, arrival at Edinburgh, followed by a train trip to Pitlochry and a bus across Perthshire before returning to the Central Belt via Crianlarich would be attractive."

"Ticketing could encourage travellers to take a few days over their trip and would increase the amount they are likely to spend on meals, accommodation and activities."



LAGGAN, MAIN STREET, KILLIN FK21 8UT
Established 1991

Painting and Decorating interior and exterior
Machine Ames Taping, Coving and Cornice work
Traditional plastering and ceramic tiling
Spraying of external walls and chimneys

Property Maintenance
Power-washing
Joinery work and General Building

Garden Maintenance

No job too big or small

For a free Quotation give us a call

Private and Commercial
Liability Insurance

Tel 01567 820854 or
07887643831

Email : bldecorators@live.co.uk





Myrtle Grove
Main Street
Killin
FK21 8UX

Tel: 01567 820212
info@escapeinkillin.co.uk
escapeinkillin.co.uk

A wide range of gifts for all, including:

- Greeting Cards and Wrapping
- Jewellery
- Bags and Purses
- Candles
- Glassware



ing or Curse for Killin?

In face of criticism, Mr Cairns maintains that the Heart 200 is not a driving route but a "touring route – places to see and stay with 29 key stops offering a warm welcome, activities, entertainment and a dram or two. It is for people who want to dawdle and relax."

With Killin being one of the key stops, some residents view the route as positive development. Jackie Bremner, owner of Escape, said: "The Heart 200 roads already carry tourist buses and traffic throughout the mainly summer and autumn months. We would hope that the impact of Heart 200 would not burden these roads too much. It may however result in the need for Stirling and Perth councils to increase the frequency of road maintenance on the route."

"The village is likely to be busier, bringing more tourists and resulting in welcome revenue income to businesses and increased work opportunities for local folk."



Luib Hotel
Under New Management



John and Sue
would like to welcome you to
The Luib Hotel.

Excellent service and quality homemade food.
New lunch menu served from 12pm - 3pm.
Delicious evening meals served from 6pm - 9pm.
Accommodation available all year round with
Doubles, singles and family rooms.
Welcoming bar with log fire.
Fantastic panoramic views.
Secure children's play park.
Open daily from 12 noon.

phone: 01567 829459 email: info@theluibhotel.co.uk
website: www.theluibhotel.co.uk



Aberfeldy Opticians

Free NHS
eye examinations
available all day
Tuesday to Friday and
Saturday mornings.

New and Existing
patients welcome.

Aberfeldy Opticians
01887 829 756

KAT Killin and Ardeonaig Trust

News First

In the last issue we reported that the shop had been closed for renovations. The renovations were completed and the shop re-opened for business at the end of March. Unfortunately, due to mistakes made by the Post Office with regard to the internet line ordered, the Post Office counter was not fully operational from day one. Until this issue was resolved alternative arrangements were made where possible to take items for posting to Strathyre. This was a stressful time for MacGregor's and we thank everyone for their patience. We hope you like the look and feel of the shop after the renovations. Our application to The Fore was not successful which left us with a shortfall for the funds required to complete the purchase and time running out. Unfortunately, most funding sources will not fund the purchase of a business, so this has meant we have had to try and find other sources to fill the shortfall. We are very fortunate that this gap has now been closed. We will be holding an official opening of the shop on Friday 31st May. For final details we will put a notice up in the shop and we would love to see you there. KAT knows how important the services that MacGregor's provide to the community, like the Post Office, Newsagents and Citizens Advice Bureau (CAB). This is due to the generous support this project has received from the community of Killin. In order for this project to succeed we need to ensure your

support continues.

What do we need you to do? Simply make sure you use the services MacGregor's provides and buy products from the shop. This will ensure that the shop will continue to grow.

Breadalbane Park

We are hoping in May that Stirling Council will be fitting the Viking Swing. This will be the start of the new play park and we hope you will all like it.

We are disappointed to have lost the centre piece of the play equipment in the sand area, but are glad that Stirling Council have managed to restore the equipment so that children can still play on it safely.

We will be submitting a funding application to the Robertson Trust in June for funds towards the new Play Park. We will keep you updated on progress.

We have also submitted an application to Stirling Council 'Your Stirling, You Decide'. Hopefully we will make it through the first stage. If we are successful in that stage, we will need your vote in order to give our proposal a better chance of being taken forward and progressing with getting more play equipment into the play park. Voting will be from 27th May to 23rd June.

Keep an eye on our Facebook page for further updates (Friends of Breadalbane Park Killin).

We will hear in July if we are successful with our Community Green Flag award again this year

and will update you in the next Killin News.

KAT AGM

KAT will not be holding their AGM until September this year (date to be arranged). The main reason for this is that KAT has changed the date on which their accounts finish. Our accounts used to end on the 31st October, but now will end on 31st March to bring them in line with some of our funding. Once the end date has been reached the accounts need to be completed, audited and a report written up. This can take around 5 months to complete. We also felt that holding the AGM in the school holidays was not a good idea.

Theresa Elliot

Project Manager
01567 820628
07789 265 823



Sula
SOFT FURNISHING & INTERIORS
Specialist in Harris Tweed

Catriona MacGeoch
Strathyre
T: 07824 446024
www.sulafurnishing.co.uk
catriona@sulafurnishing.co.uk

We design and make the following soft furnishing items for your home.
: Curtains : Roman Blinds : Throws : Stools : Cushions : Window seats :
Please get in touch to discuss your requirements.



HEARTLAND
Veterinary Services Ltd

Clinics are held in the bowling green pavilion in Killin on the following dates between 9.30 & 11.30am

<p>Wed 29th May</p> <p>Wed 12th June</p> <p>Wed 26th June</p> <p>Wed 10th July</p> <p>Wed 24th July</p> <p>Wed 7th Aug</p> <p>Wed 21st Aug</p>	<p>Join our pet Care Health Plan. This has been set up to enable you to spread the cost of routine preventative health care treatments.</p>
--	---

Repeat prescriptions, food or any other veterinary requirements can be collected on these days, providing they are ordered in advance.

Call: **01887 820 771**
for an appointment

email: aberfeldy@breadalbanevets.co.uk
Find us at www.heartlandvets.co.uk
& on Facebook

Community Sport Hub Update

The Community Sport Hub met once again on April 30th, marking one year since the initial engagement session for the hub. In that time the hub has connected in with 16

different groups and clubs through at least one meeting and have hosted eight meetings that have seen local priorities for sport and physical activity culminating in a hub action plan.

Within that, the hub is progressing partnerships and links which will provide opportunities focused on people, places, profile, participation and connection. Over the coming months we will

be working closely to align initiatives based on the club's feasibility study, looking to host a clubs open door week and share more in-depth case studies of local opportunities.

As always if you would like to learn more or are interested in being involved please contact:

KDSLCL at info@kdscl.co.uk or the CSH Officer Christopher McKenna at: mckennac@stirling.gov.uk

Easter Holiday Activities

Over the Easter school holidays we ran two activity days for primary 1-7 school pupils. Over the two days we had sport sessions delivered by Active Stirling, walks delivered by the National Trust and much more! We



thank all our volunteers and deliverers who helped the children to have a great time during their holidays.

Five-a-Side Football

Now that the better weather has arrived once more, we have started up football sessions again on the astro turf pitch. The sessions will now

be on a Monday evening (from 7pm) and will be for age 16 (+) (unless accompanied by a responsible adult, either playing or watching and the children must be at least 14 years old). As previously there will be a small charge of £1.

Book Sale

We also hosted a book/CD/DVD sale at the sport pavilion on Saturday,

April 20th. Many thanks for the kind donations and endeavors of those who supported the day, culminating in funds of £120 being raised for general repairs to the building.

Feasibility Study

Last issue we outlined our work to undertake a feasibility study with the aim of seeing if there is demand to expand

our current pavilion into a modernised, flexible community facility. The response across the surveys has been absolutely brilliant and we look forward to sharing some of the findings from this with you shortly.

Christopher McKenna

**No road trip is complete without a
visit to....**



TJ's Diner

New Menu!!
Hand made Burgers
Grilled Cheese
Ice Cream Milkshakes
Salads
Hot Dogs
Kids Menu
All Day Breakfast



**This voucher entitles you
to one complimentary
regular soft drink or hot
drink when a main meal is
purchased**

(Offer available at any time)

Free WiFi

6 Main Street, Tyndrum
01838-400 557
www.tjsdiner.co.uk
insta: @tjstyndrum



Comic Relief

Our S6 Charities Committee organised a Mufti Day and fancy dress parade on Friday 15th March to raise money for Comic Relief. S6 pupils and staff put in a huge effort with their dressing up costumes and the winners were announced as follows:

S6 pupils 1st place—Freddie Mercury (Iona Whitehead)

S6 pupils 2nd place— 7 Snow Whites and a Dwarf (left to right - dwarf, Tyler Livingstone Angus Parson, Greg McLachlin, Peter Hayes, Cameron McLay, Max Parsons, James Isgrove, missing Harris Fisher who sadly had a PE prelim)

S6 pupils 3rd place— McLaren Care Home (left to right - Katie Drummond, Brodie Haldane, Isla Huckerby, Mika Watson, Katie Murdoch and Courtney Strachan, front)

Staff winners were the Science & Technology Faculty with 'Save our Seas'.

During the day we raised £622.04 for this good cause. Well done everyone!



Anthony Nolan

The Scottish Fire and Rescue Service (SFRS) have been working in partnership with 'Anthony Nolan' since 2009, organising events to recruit potential donors to the stem cell register. A further 32 potential life savers were added to the Anthony Nolan register by SFRS volunteers on Tuesday 23rd April at McLaren High School.



Bridge End Mill



Exciting new Giftware

Candles & Jewellery
Rugs, Bags
Scarves and T-shirts
Large Scottish Selection including
Pewter and Glassware
Toys, Confectionery and Ice cream

Open 10am- 5.30pm 7 days a week

Falls of Dochart, Killin

Tel : 01567 820508

www.thepresentshop.co.uk



**McLaren
Leisure**



Leisure Facilities

- Swimming Pool
- Climbing Wall
- Fitness Suite
- Indoor Courts
- Full size 3G Pitch
- Café
- Soft Play Zone
- Fitness Classes
- Kids Holiday Camps
- Meeting Facilities
- Laser Tag

01877 330000

www.mclarenleisure.co.uk

Spring Concert

Our Spring Concert took place on Thursday 28th March. This was another outstanding evening of musical performances by pupils, featuring works by Beethoven and Piazzolla as well as popular film scores, chart hits and traditional music. Our fabulous music festival prize winners also performed.



Reindeer Trail – congratulations to Nina Harrison (S1) whose reindeer design was voted the most popular design on Stirling's first Reindeer Trail.

Head Boy & Head Girl

We are pleased to announce that the following pupils have secured positions as part of the Pupil Leadership Team for next session:
Head Boy: Harris Clark
Head Girl: Eva Fisher
Depute Head Boy: Michael Limonci
Depute Head Girl: Emily Black

Scottish Youth Parliament

Congratulations to Lottie Hesp who has been elected as a Member of the Scottish Youth Parliament for Stirling.

Salters Festival of Chemistry

Congratulations to Miss Oman's Young Chemists for their 1st Place award in this year's Salters Festival of Chemistry

S6 Last Day

On Wednesday 24th April we were delighted to provide our S6 pupils with an opportunity to celebrate their time at McLaren High School. Our celebrations started with a leavers' breakfast, followed by a graduation ceremony. The pupils leave with a legacy of excellence in the classroom, on stage, both in music and theatre, on the sports field and of impressive service to the School community. We wish all our leavers well in their future endeavours – they have been an outstanding group of young people to work with.

Annual Easter Egg Competition

McLaren's annual Easter Egg competition attracted a high standard of entries. 1st place was Queen Elizabeth II (Murray Frost – S2), 2nd was William Wallace (Freya Sherry – S2) and 3rd was a German trench (Dylan Fox – S2). Well done to Miss Allan (Physics) for winning the staff entry with Neill Eggstrong!

Equali-tea Morning

Thursday 18th May saw the rainbow flag hoisted over Doune Primary as P6 and P7 pupils and S6 Sports Leaders from McLaren High School welcomed parents and guests to their Equali-tea Party to celebrate Diversity. Since August, senior pupils from Doune Primary School have been part of an innovative pilot project 'MIND your health and be YOURSELF', funded by the Lottery Year of The Young Person, where S6 Sports Leaders have planned and delivered high quality stimulating lessons every Friday about Health and Wellbeing, and in particular, Mental Health and Equality. In March the P6/7 pupils completed a six week programme about Equality focusing on labels, stereotypes, discrimination and the LGBT Community. The P6/7 pupils showcased what they have learned about each of these areas during the Equali-tea morning supported by their S6 mentors. Their guests were challenged to reject prejudice and stereotypes through a range of activities which saw the Head Teachers of both schools going head to head on the skittles challenge, surprises (some unpleasant) in the beanboozled challenge and some rethinking required from our guests in the drawing activity. The winner of our rainbow laces showed she had listened the best during all the activities and we finished off with tea and cakes served by the children. This event supported the work Scottish Government are currently undertaking following the review of personal and social education and to implement LGBT inclusive education.

S1 Central Schools 7s Tournament

On Wednesday 24th April, McLaren travelled to Alloa RFC to take part in the annual Central Schools 7s



CARPET & UPHOLSTERY CLEANING

Excellent Fabric Cleaning Solutions
Pet Stain & Odour Removal

Carpets - Upholstery - Leather
Mattresses - Stone - Vinyl - Wood
Pressure Washing

Call Chris for details:
07827 014328
web: ecocarpetcleaning.net

RG ELECTRICAL & CONTRACTING

ELECTRICAL

- ELECTRICAL INSTALLATION & MAINTENANCE
 - FAULT FINDING
- INSPECTION & TESTING
 - RE-WIRES
- ELECTRIC HEATING SYSTEMS

CONTRACTING

- TRACTOR & TRAILER HIRE
 - SNOW CLEARING
- FIREWOOD PROCESSING
- DIGGER & PLANT HIRE
- FIREWOOD SUPPLIES

CONTACT ROBERT GRANT
M: 07766 202418
E: rgeleckillin@gmail.com

GRANT AND WELSH

(Sole proprietor: A Grant)

Painter & Decorators

Ames Taping

tel: (Killin 01567) 820 462

Greenbank, Main Street, Killin

McLaren High School

Tournament. Due to a high level of interest from the boys, McLaren were in the fortunate position of being able to field two teams. It was great to see so many boys enthusiastic and keen to take part. McLaren A won their fixtures against Wallace B and Falkirk. However, in a pool decider, they lost narrowly to Dunblane. The McLaren B team lost their opening fixture against Balfron A. However, they bounced back with a win against Lornhill and then a draw with Braes. A great night of rugby with 10 schools participating.

Cabaret night

On Friday 26th April, the School opened the doors for a "Cabaret Night", an event organised by the Music Department to raise funds for this year's school show "Grease". The evening saw more than 21 pupils take to the stage, several appearing more than once, to perform to a varied programme in a very relaxed hall with more than 90 seated in the audience. It was a great success and raised more than £500 towards show funds. It is hoped to hold a further similar event – watch this space for further information!

Matilda

Over 100 staff and pupils attended a Matilda Musical trip to the Edinburgh Playhouse. Great reviews were received from everyone who attended.



Golf Outing

"A group of determined young golfers from McLaren High will head to the 1st tee at Callander Golf Club early on the morning of Friday 21st June to start what promises to be a day of sporting endurance, raising funds through the Longest Day Challenge on behalf of MacMillan Cancer Support. These seven young men, accompanied by a golf enthusiast

teacher, will each aim to play 72 holes, or four rounds of golf, on the day. Most of the boys are Junior Members of Callander Golf Club, who have supported the challenge by accommodating slightly flexible tee times throughout the course of the day. CGC Junior Convener, Jim Frail, wished the team well: "It's brilliant to see youngsters playing lots of golf, especially playing so much golf for such a great cause!"

Organiser, Ken Milligan, has his fingers crossed for good weather on the day. "It's not the end of the world if it rains, but it will make the challenge much more demanding. Mind you, if it's blazing sunshine that will also make it more like real hard work! Here's hoping for spells of sunshine with intermittent cloud and some great golfing fun."

The team are hoping to raise lots of money for MacMillan Cancer Support and will be seeking sponsorship around town. Anyone who would like to offer support should contact any of the lads concerned or school, either via main reception or direct to Mr Milligan via email milligank04s@glow.sch.uk

The
**BRIDGE of
LOCHAY
HOTEL**
Traditional Scottish Inn

WITH OUR ROARING FIRES...

The Bridge of Lochay is one of the BEST places in the area to enjoy a friendly welcome, comfortable surroundings and GREAT food.



FOLLOW
US ON:



**Our fabulous traditional
Lunch Menu
served
Sat & Sun 12 - 5pm
Mon to Fri 12 - 2pm**

www.bridgeoflochay.com reservations@bridgeoflochay.com 01567 820272
ABERFELDY ROAD, KILLIN, FK21 8TS BOOKING ADVISABLE TO AVOID DISAPPOINTMENT

An appreciation of the Mole *Talpa europea* or *Famh*

Not always "the pest" they are assumed to be!

The mole is one of our most common native animals but due to its subterranean life it is rarely seen. However in the countryside, evidence of their presence in the form of molehills is almost everywhere. Originally a deciduous woodland species, they now occur in many different habitats as long as there is soil deep enough to allow construction of tunnels. They have been recorded as high as 1000 metres in the UK.

For some, the mole may appear rather strange with its tiny eyes, broad short spade-like forelimbs with 5 strong claws, pink fleshy nose and short tail. However its soft velvet black coat was once prized by the fashion industry and around 12 million skins were sent annually to America in the 1920s. Thankfully, the market for their velvet has all but died out. At one time folk remedies for illnesses such as goitre and epilepsy caused moles terrible cruelty. Moles no longer suffer an agonising death from strychnine,

though Britain only banned the poison for use on moles in 2006, despite its use having been illegal on all other animals since 1963.

Although earthworms are their favourite nosh, moles also eat insect larvae, particularly carrot fly and



cockchafer larvae. As they have poor eyesight, hunting is done by smell and "feeling" their prey through sensory hairs on their face. Upright tails help them to reverse quickly in their tunnels when necessary

Each mole lives at depths of up to 150cm (5ft) in a complex network of tunnels of more than a kilometre long, all packed like spaghetti into a territory only 30-40 metres across. The deepest tunnels are used in cold weather and drought conditions. A few of its peripheral tunnels are shared with adjacent moles - offering vital information about the neighbours. Moles, being highly territorial, scent mark the shared tunnels in warning. Encounters with other moles are rarely fatal as the subordinate animal usually withdraws. Radio telemetry has shown that moles spend only 0.9% of their time within 6 metres of another mole.

Amazingly moles can lift 2kg of soil which is 20 times their own bodyweight. As a result of all this tunnelling and digging they contribute to the health of the soil, turning it, draining it and mixing its nutrients, while their molehills can be nurseries for wild flowers. Even on farmland, moles have a role, aerating soil and eating crop-damaging larvae.

Uniquely among mammals, the females have 'ovotestes': a combination of ovary, which produces eggs and testicular tissue. The latter generates the hormone testosterone, which is likely to be responsible for the female mole's aggressive defence of her territory. Male moles may move 800 metres to find a mate in the breeding

season. They breed once a year, rearing on average 3 young in a spherical nest of dry grass. The young are fed entirely on their mother's milk, gaining weight so fast that, if they were human, they would weigh 8st three weeks after birth! After 5 weeks they are independent. 64% of moles die by their first birthday yet they can live to 5 or 6 years of age. One of the major causes of mortality is predation by birds of prey, stoats and foxes. Moles are an important prey item for tawny owls, possibly contributing as much as 45% by weight of their diet in June and July, the time when young moles are out to look for their own territories. Buzzards, kestrels and red kite also eat moles frequently.

In the words of Rob Atkinson, a British mole expert and author, "surely moles - mighty, mysterious and resilient - deserve our respect and, as often as we can offer it, our tolerance".

Gatehouse Nursery

Bedding Plants

Filled Baskets & Containers

**National Garden Gift Vouchers
Sold & Exchanged**

Opening Times: Mon - Sun 10am - 5pm

Tel: 01887 820472
www.gatehousenursery.co.uk

Gatehouse Nursery is Situated 2 miles South of Aberfeldy
on the Crieff Road (A826)

callander PHYSIOTHERAPY

Experienced Physiotherapists HCPC registered.
Massage Therapist

EFFECTIVE TREATMENT TO GET YOU BACK ON TRACK.

3 Station Road, Callander

FOR APPOINTMENTS/ENQUIRIES

01877 339 989 (24/7 reception service) callander.physiotherapy@gmail.com
www.callanderphysiotherapy.co.uk



Strathfillan by the Way

Strathfillan Community Development Trust

Adopt a Tub Scheme

All the tubs have arrived in both villages, and teams of adoptees have been working hard to fill and plant them. As we have had a significant increase in the number of tubs this year, work to fill them all is still on going. If you are interested in adopting tubs or helping our in either Tyndrum or Crianlarich, please just get in touch with Kelly or a Trustee.

Lower Station Yard

Unfortunately we were unsuccessful in our application to our prospective main funder for the proposed LSY developments. We are very disappointed, however, the National Park, Stirling Council and our Leader funders are keen to support and progress the project. Therefore, we are currently working on a reduced project proposal, which will hopefully resolve some of the problems that Crianlarich has been experiencing over the past few years with the increase in visitors. So watch this space!

Bike Skills Park

Things are progressing with the Bike Skills Park plan, and we hope to release the final design draft shortly. Following the Open Evening and further professional assessment of the site, we have decided to move the proposed location of the Park. We now plan to site it adjacent to Dalrigh car park. This relocation will help resolve resident concerns regarding parking provision in Tyndrum; provide a more accessible and suitable site, which will reduce construction costs and will enable the designers to put in all the features and abilities requested by our

local children and young people. We plan to post the draft plan on our Facebook page, Strathfillan Community, for people to view and comment. So please keep your eyes peeled. Having seen the initial plan, it does look fantastic.

Cycle Path

The Trust is still working feverishly behind the scenes with the Countryside Trust to complete the second phase of the Tyndrum to Crianlarich Cycle Path. We have suffered a number of hiccups and setbacks over the past six months, but are hoping that things are finally starting to move forward again. We are still looking into possibly purchasing Ewich Wood for the cycle path, and will be coming to the community in the next couple of months to get their support. So please keep an eye out.

Small Grants Scheme 2019

The Trust would like to draw your attention to another round of our Small Grants Scheme. If you are a community group in Strathfillan and are looking for a small amount of money to help buy materials, run a project or other activities, then please contact Kelly at the Trust. The funding pot is limited so please don't hang about!

Contact

If you want to get in touch with the Trust for any reason we want to hear from you. Office hours are Tuesdays and Wednesdays 9.30am to 2.30pm, at Crianlarich Village Hall. You can email Kelly at kelly@strathfillandct.org.uk or phone 01838 300249 during office hours.

Thank You

Isla, Bryan, Alasdair and Nicola would like to thank all our friends and customers for all the good wishes, cards and gifts we received as we left Londis Crianlarich Store. We are incredibly touched by the generosity, and are enjoying choosing items for our new garden with the gift vouchers we received. We have all thoroughly enjoyed our 15 1/2 years in Crianlarich and



playing our part in the community. Alasdair and Nicola are both very fortunate to have attended Crianlarich Primary and McLaren High, two excellent schools which have given them both a great start in life. We will miss our many friends, although we will be back to visit, but are looking forward to starting the next chapter of our lives, living in Glenfarg, near Perth. We are delighted to have left the shop in such good hands, and wish Andrea and Billy all the very best for the future.

With many thanks,
Isla, Bryan, Alasdair & Nicola Craig



The Artisan Café
Tyndrum

Home cooked food
Great for unusual gifts
Craft workshops

Summer Opening
March to End of October
open 7 days 10 – 4pm

Strathfillan Church, Tyndrum.
FK208RU
Tel – 01838400391
E mail – info@countrymumkins.co.uk
www.artisancafeTyndrum.co.uk

KILLIN & DISTRICT
Sports & Leisure
CLUB

Club Room available to hire
for meetings & parties

£5 per hour
(minimum 2 hour booking)

Music player & disco lights
available for parties

For further information, or to
book, please contact us at

info@kdsllc.uk
07986656047



Londis POST OFFICE

www.crianlarichstore.co.uk
shop@crianlarichstore.co.uk
Tel: 01838 300245

 [LondisCrianlarichStore](https://www.facebook.com/LondisCrianlarichStore)

Strathfillan Community Council AGM

Monday 3rd June at 7pm

Crianlarich Village Hall

To be followed by Community Council Meeting at 7.30pm

Light Relief From Local Limericks

There was a young girl from Killin
Who went out on her bike for a spin
She cycled so fast
That ride was her last
Now she orbits the earth with a grin

There was a wee lass from Killin
Who lost weight and got terribly thin
So she ate very well
And started to swell
But went pop when she sat on a pin

There was a poor soul from Loch Tay
Who was constantly losing the way
To Tyndrum she wandered
Where gold mines she plundered
She's worth twenty million today

There was a young lad from Killin
Who went on a trip to Berlin
When viewing the wall
He had a slight fall
Now he's stuck, one foot out, one foot in

Killin Highland Games

As you all know, the Killin Highland Games will be held in the park on Wednesday, 7th August.

The team would appreciate some help with setting up on the Tuesday and stewarding on the day.

We are hoping for sunshine, lots of visitors and, of course, well behaved animals.

If you are able to help please contact me.

Charlie Grant
Chairman

Killin Community Council

The new Community Council has had a preliminary meeting to elect officers.

The new officers are:

Chairman - Andy Aitken

Secretary - Ron Allner

Treasurer - Pamela Farquharson.

The rest of the councillors are

Amanda Clark

David Fettes

Charlie Grant

Colin Hay (Deputy Chairman)

Stewart Inglis

Chaz Kemp.

Their first meeting will be on Monday 17th June at 7.30 in the School.

If you have anything you wish to be discussed, please contact one of the councillors in good time before the meeting.

**The Green Welly Stop,
Tyndrum,
Perthshire,
FK20 8RY**

**THE GREEN
WELLY
STOP**
AT TYNDRUM



NEW SITE



**Wash & Dry
8kg - 18kg**

- Wash & DRY HEAVY LOADS
- IDEAL FOR DUVETS, PILLOWS...
- NON BIO DETERGENT INCLUDED
- SHORT CYCLE- 30 MINUTES

On the West Highland Way, A82

Class 2 Poetry Afternoon

In Class 2, we have been learning how to write different types of poems including some about colours, animals, festivals and dinnertime! We each put our poems into our own poetry books and shared them with our families and Class 3. It was great sharing our hard work with them and they gave us lovely comments.

Paige and Rhys



Think Dance

After much deliberation, the Think Dance children chose Scotland as their theme for this year's performance at the MacRobert Arts Centre. They came up with lots of fantastic ideas of landmarks, culture and past times relating to Scotland. This year, more than ever, the children grew as performers and developed confidence through team work and laughter. As always, the Killin support was by far the loudest which was fully appreciated and spurred them on even more. We are all so proud of you and what you have achieved.

Mrs Hibbert



Dalguise Residential Visit

Primary 7 attended their residential at Dalguise along with the other P7s from McLaren Cluster Schools. We enjoyed physical activities (such as archery, giant swing and zip line) during the day and at night we had team games and a camp fire. We made lots of new friends and can't wait to see them again at our induction days.

Sean and Innes



GRANT'S LAUNDRY
Main Street Killin
Tel: (01567) 820 235
& 820 744

Here for ALL your Laundry Needs

Laundry Hours:
Monday to Friday
9am to 5pm
Saturday 9am till 12 noon

THE FABRIC STUDIO

Specialists in Design & Make Up of Curtains
Blinds, Upholstery & all Soft Furnishings
Huge Range of Modern & Traditional Fabrics
Complete Curtain Service, including Free Measuring & Quotes
Fabrics Brought to Your Home
Friendly Staff, delighted to help & advise
Drummond St, Comrie 01764 670921
Mon, Tue, Thur, Fri 9.30 - 5.00 Sat By Appointment

Mobile No : 07792 - 169253

Jack and the Beanstalk

All classes enjoyed performing our version of 'Jack and the Beanstalk' for a packed audience at McLaren Hall. Everyone sang and acted amazingly and the feedback from the crowd was incredible. Thank you to parents, family and friends of Killin Primary School who came to support us. Thanks also to the Killin Drama Club, McLaren Hall, KPP and Goode Photography. **Stewart (The Giant) and Lauren (Jack)**



Racing Up and Down Stuc Hill



I.T. & ME
Discover what I.T. can do for you!

Need a hand with your tablet, laptop or mobile?

Come along to our free I.T. & Me sessions for help & support

Weekly drop-in at Killin Library Tuesdays 11am-1pm

To find out more please ask at the desk or contact:
Angela Short
Digital Inclusion Officer
Tel: 01786 237647
Email: shortan@stirling.gov.uk

PFK Callander Ltd

140 Main Street
CALLANDER

Tel: 01877 331569 or 07901 651361
Email: pfkcallander@btconnect.com

MOT's, Servicing, Repair's, Diagnostics & ECU Remapping

MOT's: £45.00;
MOT & SERVICE FROM: £99.00;
ECU REMAP FROM: £200.00.

Open: Mon to Fri 8am to 6pm & Sat 8am to 1pm

Douglas McRobbie ELECTRICAL Killin

SELECT

All Types of Electrical Installation Repairs & Maintenance

telephone: (01567) 820374
mobile: 07767 398085
email: douglasmcrobbe@aol.com

Pennycross, Manse Rd, Killin, Perthshire

VE Day Picnic

We celebrated the end of our WW2 topic with a VE day picnic and a singalong at the Falls of Dochart Retirement Home. We all got dressed up, had jam sandwiches, spam and boiled sweets and finished off with a game of rounders. The residents at the Home told us about their experiences of WW2 and showed us some memorabilia. We sang a few songs from the era and told the residents what we had learned in class. It was a great end to our topic.

Caitlin P6



Cooper Cottages
self catering accommodation

01877 384331
coopercottages.com
enquiries@coopercottages.com



 49 Borestone Crescent, Stirling, FK7 9BQ

 Stephen.kerr.mp@parliament.uk

 01786 475 034



Please get in touch if you have any issues or concerns you'd like to raise.



STEPHEN KERR MP

More photos of the VE Picnic Day



Reflecting the seriousness of the occasion?



Celebrating Victory



Happy to be down from the sky at last

Care
dental

In this day and age as consumers we are used to having lots of choices. Therefore it is important to gather information to allow us to make good decisions. At Care Dental we believe that you should be in control, as it is your health and therefore your choice in regards to the level of care you wish to receive. We have listed below some suggestions of what you should consider before you trust someone with your dental health.



AWARD WINNING
DENTAL PRACTICE

Top 10 things to consider when choosing a new dentist.

- 1) The availability of Emergency appointments.
- 2) Cleanliness / cross infection control protocols and the level of investments made in new sterilisation equipment.
- 3) Is the practice focused on your long term health care or just cosmetics?
- 4) Are you given choices in regards to costs and the level of care you wish to receive i.e. Private / NHS / Mixed Care or Payment Plans?
- 5) Do they have out of hour appointment times that suit working people?
- 6) Have they continued to invest in new technology?
- 7) Are they recommended by patients within the community?
- 8) If you are looking for implant treatment do they offer any guarantees and how many implants do they place a year?
- 9) Can you visit the practice for a free consultation to see what they have on offer?
- 10) Have they been nationally recognised within the dental profession?

This is not an exhausted list and there may be other priorities that as individuals you wish to consider, but hopefully it will act as a guide towards helping you make the right decision.

34 Comrie Street, Crieff, Perthshire PH7 4AX

T: 01764 652607 E: reception.caredental@portmanhealthcare.co.uk www.care-dental.co.uk



Ron's Village Snaps





MAINS TAYMOUTH
GOLFERS RESORT & GOLF COURSE

KENMORE ~ PERTSHIRE



SELF CATERING

- * Luxury 4 & 5* self catering accommodation
- * Sleep 2-12
- * Hot tubs
- * Saunas
- * Games rooms & pool tables
- * Full weeks & short breaks with any day arrival
- * Live, online availability



GOLF COURSE

- * Challenging 9 hole course
- * Onsite bar & shop
- * Club & trolley hire
- * Visitors and children welcome
- * Open daily (weather permitting)







01887 830226 www.taymouth.co.uk

The Coach House Hotel

www.hotelkillin.co.uk
★ ★ ★



Home cooked bar meals

Log burning stove

Real Ales

Large selection of Malt Whiskies

Live Music

01567 820 349



Walk in the Park

Date	Meeting at 10.20am	All Routes: Walk from 15min – 1hour
05/06/19	McLaren Hall Car Park	Loch Circuit
12/06/19	McLaren Hall Car Park	Kenmore (car share) *
19/06/19	Capercaillie	Craignavie Road *
26/06/19	McLaren Hall Car Park	NCN7 at Strathyre (car share)
03/07/19	Capercaillie	Kinnell Circuit
10/07/19	McLaren Hall Car park	Glen Lochay Loop (car share) *
17/07/19	McLaren Hall Car park	Mhor 84 (car share) *
24/07/19	McLaren Hall Car park	Loch Circuit
31/07/19	McLaren Hall Car park	Tyndrum River Walk (car share) *

* denotes dementia-friendly walks

No need to book, just turn up | social time after the walk in a café (optional)

For more information contact: Walk in the Park Project Coordinator

Cathy Scott: cathy.scott@lochlomond-trossachs.org tel. 01877 330055

Steps to Better Health

No matter how limited your activity level is, Walk in the Park would like to help you to regain mobility, strength and get you walking again with confidence. Step by step we provide a walking pathway from your armchair to a 30 minute walk and beyond.

Walk in the Park can help you to feel more confident by going for a walk as part of a group, supported and encouraged by trained volunteer walk leaders.

Perhaps you have recently retired or moved to the area and are looking for new friends and a gentle way of exercising. All our walks and sessions are led by friendly walk leaders, are fun and free of charge.

Do you find yourself spending a lot of time sitting indoors and wishing you could get outside for some fresh air, exercise and some social time? The following 2 steps might help you.

Step 1. Strength and Balance Exercise, Wednesday 1.30–2.30pm, Killin Hotel

The session is aimed at older adults although anyone will feel the benefit. These exercises are very gentle but effective and are done from a seated position or standing behind a chair. They include knee bends and leg raises and are based on the Otago Exercise Programme. If you have difficulty walking due to pain in your knees, or hips or problems with your balance then this session is for you. As progression is made you will find that your strength and balance has improved enough to allow you to walk more confidently.

Step 2. Health Walk – Wednesday 10.20am

On the health walk there is an opportunity to start off slowly and build up. You can join this walk and be sure that you can go at a pace and distance that suits you on the day. All our group walks are on good walking surfaces, are risk assessed and are led by trained walk leaders and last between 30min and 1 hour. Some of these morning

walks are in the village, others are in the surrounding areas. Some walks involve car share - walkers who have the use of a car offer lifts to those who don't. We go for a cup of tea after the walk for a social time together (optional).

Booking is not necessary, however if you have any questions about joining in any of our walks or exercise sessions please contact the Walk in the Park Coordinator - Cathy Scott 07852 334272 or send an email to: cathy.scott@lochlomond-trossachs.org For more information about Walk in the Park and walk schedules for all groups including Killin, Callander, Aberfoyle, Drymen and Balloch visit www.trustinthepark.org/walk-in-the-park

You might like to check with your G.P or Physiotherapist if you think you have a medical condition that might prevent you from taking part.

S. FORSTER ELECTRICAL
FOR ALL
YOUR ELECTRICAL NEEDS

REWIRES SECURITY LIGHTING
SHOWERS SOCKETS
INTRUDER & FIRE ALARMS
P.A.T. TESTING
ELECTRICAL CERTIFICATION

Call Stuart on
01567 820 031 or 07855 496 961
Stuartfuzzy@btinternet.com

SELECT

the
Courie
inn

**Come and Courie In in our cosy bar
or enjoy great food in our Bistro.**

Excellent home cooked food
to eat in or take away

Awarded TripAdvisor certificate of
excellence each year since opening!
Call us or check out our web site for
further information.
Tel: 01567 831000
www.thecourieinn.com
Open every day from 12pm

ERIC McALLISTER
Carpet Fitter
"Tredaire"

tel: **01567 820359**
mob: **07971 677291**

**SPECIALIST ON ALL
FLOOR COVERINGS
SAMPLES DELIVERED TO
YOUR HOME**

**Supplier of
Carpets & Vinyls**

All Things Wild And Wonderful

There has been a lot of talk recently about endangered animals, plants and insects and we think of this going on in Africa and other distant places but it is also happening here in Killin. Just in our area fifty years ago the sight of the tails of foxes and wild cats hung on the fences by gamekeepers was normal. Where are the wild cats now? And when did you last see a hedgehog – or even a squedgehog on the road? The absence of rabbits and large slugs may be celebrated by gardeners but the absence of frogs from ponds is sad. We had only a few last year and this year no croaking and cavorting and no frogspawn at all. Voles, moles and mice are less numerous and weasels

and stoats seen less often although a pinemarten has occasionally visited. Not so long ago birds like treecreepers and goldcrests were not uncommon but we never see them now. Owls and cuckoos were heard more frequently but it's been years since we saw the furry owlets. Summer visiting spotted flycatchers are fewer in number and lapwings, which used to nest in the field by the loch, have not done so for many years now. Wrens are more frequent than they were immediately after the bad winter in 2010 but still fewer than before then. Some varieties of butterflies are now rare but we still have orange tips and peacocks, and although there seem to be plenty of bumble bees around, there are no

honey bees among them. Wildflowers, too, have disappeared. Wild orchids, water avens, pink purslane, wintergreen and many more common varieties which were found at the side of woodland paths, are no longer there and even primroses are in smaller clumps and fewer areas. There used to be a rare purple grass of parnassus at the edge of the loch and I wonder if it still exists. Maybe some of these species are still more common in other parts of Killin. Should we be encouraging them to return? If so, how? Perhaps you have some suggestions.

Margaret MacIver
Auchmore

Eco Friendly Weedkiller

Many of us want to limit the amount of chemicals we use in our home and garden. I am not saying I do not use them, but I like to try alternatives when I can.

Weedkillers

Useful for weeds in paths, drives and patios.

1 Litre of White vinegar

1/3 cup of salt

Tablespoon of washing-up liquid (any type).

Spray bottle or watering can with fine rose on it.

Mix the salt in the vinegar until dissolved then add the washing up liquid and agitate.

Apply to the weeds taking care not to apply to plants/grass that you want to keep.

How does it work? The vinegar contains acetic acid which is toxic to plants (but it will alter the Ph of your

soil, so be careful) and salt will dry out the weed (again be careful as it will remain in the soil for some time). The washing-up liquid acts as a surfactant making the solution stick to the weed (a bit like the oil in a simple salad dressing helps the vinegar stick to your salad). This will not kill the roots of the weeds and will not treat every weed, but well worth a try. Continuous treatment of weeds like this eventually should get rid of the weeds, as without the foliage a plant generally will not survive. Of course, the most effective non-chemical weed killer will always be the manual method using the good old fork/hoe etc.

Weed Control Fabric

This is great under gravelled areas where you are not wanting to plant, but on a border in time will cause its own problems once the mulch on top of it decomposes. Basically, the mulch decomposes and creates a

layer of top soil which then means that roots of plants you want cannot flourish (unless you make planting holes), also worms etc. that help to improve the quality of your soil cannot pass through the weed control fabric. Of course, you can dig up the weed control fabric once the mulch decomposes, but how many people will re-use it instead of it ending up in landfill? Alternatively, you could remove the decomposed mulch and use it elsewhere in your garden and then re-apply fresh mulch.

An Alternative is to lay layers of cardboard (after removing any staples, tape, stickers etc.) over the weeds and top with mulch. As the cardboard decomposes it also feeds the soil. (thick layers of newspaper can also be used).

Liz Stevens



Looking after your best friend!

Experienced professional grooming and bathing facilities for Large and Small Dogs

Join our Pet Health Plan to budget monthly and reduce the cost of your pet's care

Tel: 01877 381213

for further details and to make an appointment

1 Lagrannoch Industrial Estate, Geisher Road
CALLANDER FK17 8LX

enquiries@riversidevetsstirling.co.uk

Find out more at www.riversidevetsstirling.co.uk

Cruachan Restaurant

Our meals are freshly prepared to order and offer fresh Scottish Fayre

Open for lunch 11am-4pm
except Tuesday & Wednesday

Open evenings from 6pm
except Tuesday & Wednesday

01567 820302



Parties
Welcome



Homebaking
Evening Meals

The Beauty of Spring

Spring is my favourite time of the year. Everything is fresh after the long winter. All the trees are in bloom, the first flowers have popped their heads up and for me, the most magical thing are the early butterflies. The first to emerge is the Orange-Tip, a very energetic little fellow that rarely stops in his quest for the very scarce nectar. To get a good photo is a real challenge, but here is a picture of a female orange-tip which at first I confused with the other early riser, the Green Veined

White. As you see they are quite similar, but my favourite is a real gem only found on the west coast of Scotland between Oban and Fort William, the Chequered Skipper. This very beautiful little butterfly is found in wooded areas living on bluebells, meadowsweet and a few other early wild flowers. My fascination with these beautiful little creatures started when I lived in Dorset where there are probably more species than any other county. Many rely on the warmer conditions

down there, but in recent years more and more species are seen in Scotland, probably the only good thing about global warming. A good place to visit to see some of these is Plean Country Park where Comma's Clouded Yellow and several other species have been seen. So next time you see a butterfly take the time to have a closer look and admire its beauty. You won't be disappointed.

Ron Allner



Top Left
Chequered Skipper

Top Right
Orange Tip female showing underwing colours

Centre Right
Orange Tip female viewed from above

Bottom Left
Green Veined White

Bottom Right
Orange Tip male



Licensed Restaurant and B&B

Balquhiddier Station, Lochearnhead,

FK19 8NX

Tel No. 01567 830262

Mob No. 07872 527741

www.thegoldenlarches.com

email: info@thegoldenlarches.com

Follow us on and

the Golden Larches

Open 7 days

Book B&B rooms direct on our website for a discount
(Discount code: Killin19)

Breakfast,, Cakes, Snacks,
Lunch and Dinner
(Sorry, we are closed June 6&7th for wedding)





The Frost Report



Save us from experts

Are you, like us, totally fed up by the jumbled stories and ideas about climate change? Everyone seems to be preaching to their own ends. People of my age can remember that when we were children we were being terrified by tales of another impending ice age, that we would all be on a two or three day working week with excess free time to fill, that we would not bother with food but just take the pills produced for spacemen and retire at 50. And don't forget reports that mobile phones would never catch on! More recently we were encouraged to use diesel as it was said to have less environmental impact but now petrol is to be preferred. It would appear that a new generation of career 'experts' are on the go again. Let's face it; they can't all be right.

Muirburn (controlled burning early in the year of small areas of long heather to create patches of young low shoots) was frowned upon by ecologist for many years. In the light of the recent spate of hill fires, they are now advocating muirburn as a good way to manage this. It has been used in many places for centuries to avoid such fire risk, even in the Serrenghetti.

It has now been argued that droughts etc. have been caused by pollution since 1900, which given the industrial Victorians it's not surprising. However research in Edinburgh is maintaining that pollution is slowing global warming by increasing cloud cover. In the 60s it was fashionable and lucrative to plant trees on the flow country of the North. This is now seen as dreadful, not so much because of lost habitats for the animals but because of carbon capture by the peat. Bit late now. At the moment it

is the government thing to plant on hill farmland. Only large blocks are to be planted. Maybe we will one day be eating trees since there is little farmland left. On the recent T.V. programme 'Scotland from the Air' many new forests were shown with the commentary that much open native woodland was making our country lovely. This was a complete untruth as we are all familiar with the acres of non-native Sitka spruce (introduced in 1831). It looks good in Alaska where wolves and bears roam over huge areas but it doesn't do much for Scotland. The freedom of information act has revealed that The Forestry Commission has culled over 30,000 deer out of season or at night in order to protect trees. Mr. Fox is happy as he is left to eat voles which eat the trees. Unfortunately for the farmers the foxes don't always know the difference between voles and lambs.

While this group are wanting to plant acres of non-native Sitka, another group of experts is wanting to fell all the beech trees as non-native. One group of experts is happy to re-introduce beavers (maybe it's an underground beaver movement infiltrating the government and advocating the planting of all these tasty trees) while another is making a 'wall' of traps around the Orkney islands to kill stoats which are, apparently, not native and are a danger to other wildlife including the Orkney vole. The R.S.P.B., Orkney Island Council, Orkney Wildlife Project and S.N.H. are spending £7.3million using 20,000 traps and 26 staff. In addition a team of stoat detection dogs will patrol the coastline, sniffing boats and lorries to intercept stoats smuggling between islands. (Eat your heart out Mr. Trump.) It sounds like a

plot for a new David Walliams book and our terrier has already filled in his application form.

Yet, thanks to a certain BBC presenter crows can only be shot in England if you have a special licence. Maybe that is why a new laser replacement for the scarecrow is being brought out. It won't be as entertaining for the scarecrow competition at the Killin show though. It is interesting that the 'experts' don't know which way to lean over the incident at Kilninver near Oban where a sea eagle has killed a golden eagle.

Some animals are not at all worried about anything. They are on a constant high as many waterways in addition to the Thames are contaminated with cocaine and ketamine. Eels are becoming hyperactive and their migrations are becoming erratic.

We are all aware of visitors leaving their rubbish by the roadside round here but more remote areas are becoming contaminated by modern litter. On Everest recently a great number of abandoned fluorescent tents and gas canisters, human poo and four bodies were cleared up. One chap who will be dead against reintroduction is the one who was walking in the New Forest and had his finger bitten off by a wild boar.

Be aware if your children are using the internet to research a topic on bees, as the DEFRA website has been known to direct users to dodgy dating sites. The ministry say that the site has been updated! It was good to hear that all the bees on the roof of Notre Dame survived the fire.

Apparently they thought that their hives were being smoked.

Tim Frost



The Studio Killin Sheila's Wee Sweetie Shop

We have approx. 200 kinds of Old Fashioned Sweets, also Jams and Conservees.

We are also continuing the Picture Framing and small Photographic projects

Telephone 07553 071 997

Learn To Sing



Why not contact

Franny Morrison

An experienced, professional singer and teacher.

All ages welcome

01567 829048

07802 929796



S.J.B Plant Hire

All excavations
&
groundworks

Tel: 07901887947

sjbplanthire@btinternet.com

Thank You Killin

Dear Killin,
It has been many years since the Walker Family has caused a daft ruckus on the Main Street in Killin, but on Friday 12th April we returned to our old ways and caused no end of bother.

Therefore, I would like to thank lots of people for looking after us. My aunt June Walker took a nasty tumble on a deserted Main Street on a Friday night. Within moments John and his van had stopped to help. I'm sorry John, I don't know your second name but you live just out of Killin. A young couple from Newcastle also stopped. They and John provided protection on the road with their vehicles and stayed with us until more help arrived. Roger came out to help and brought us a lovely warm rug and a chair, it was so cold.

Then William Stitt arrived with his Mountain Rescue training and Amanda, from the Falls of Dochart Retirement Home, appeared with good sense and medical training. They advised ringing 999, provided

padding for a cut and helped get my aunt off the very cold ground. Hard on their heels came a gentle, professional paramedic. By this time my aunt was quite unwell.

The paramedic and Mr. Stitt got her to the warm retirement home where we were made very welcome by the whole team. Warm tea and a sit down for my Uncle Cameron and the best possible care for June and us all, while we waited for the ambulance.

Thank you to Amanda, Hazel, Freda and I'm so sorry I've forgotten the other ladies' names.

The (by then quite large) team of professionals looking after June, in a tiny highland village on a Friday night in April, decided that a ride to Perth hospital was the order of the night for my aunt, so the Crieff paramedic team took her there, closely followed by my brother and my uncle.

Once there, June was treated brilliantly and eventually given a

clean bill of health and was able to return to Killin the following day, bumped and bruised but ok. The Killin Hotel team could not have been kinder or more accommodating either.

I still can't quite believe all that happened in such a short space of time. We are very grateful. I hope I have not forgotten anyone. (I was a little distracted).

We will try to be less dramatic the next time we see you. June is home safe.

Killin folk you are just awesome. Thank you all so very much!
Much love

**The Walker Clan
June, Cameron, Ali and Iain**

Outdoor Bowling

Killin Sports Pavilion
Monday evenings 6.30pm
Everyone welcome
Any enquiries:
Dougie Livingstone
07786 477101

TOMBRECK FARM SHOP

In our shop we sell what we grow on the farm:
Eggs, frozen meat in various cuts, preserves

**PORK
LAMB
HOGGET
WILD VENISON
HOME MADE SAUSAGES
& BACON**

We grow organically without the use of chemicals, and all our animals are Free Range

Kunekune weaner pigs sometimes available

Tombreck Farm is on the north shore of Loch Tay on the A827
Killin - Kenmore road.

Tombreck Farm, Lawers, Aberfeldy, Perthshire, PH15 2PB
Phone 01567 820500, mobile 07725 320546
suemanning@tombreck.co.uk
www.tombreck.co.uk

HOME GROWN PRODUCE

**andrew baird
OPTOMETRIST**

FREE NHS EYE EXAMINATIONS FOR ALL UK RESIDENTS

**LARGE SELECTION OF PRESCRIPTION
SUNGLASSES IN STOCK**





**49 Main Street
CALLANDER
(01877) 330084**

www.andrewbairdoptometrist.co.uk

KDVCS



Killin and District Volunteer Car Scheme

The Car Scheme continues to work well and is being well used. A group of drivers and escorts have received Passenger Awareness Training, delivered by a qualified trainer from Dial a Journey, Stirling. This provides a nationally recognised standard administered by the Community

Transport Association. Another group will receive the same training in June.

The cost of journeys remains at 20p a mile and the scheme is still covering the cost of the dead miles which drivers make to get to passengers. Help to pay for travel costs is available from the NHS, Form HC1 can be used if you are on a low income and copies of this can be found in the Doctors' Surgery and Library. You do not need to complete this form if you are receiving income based benefits as you are already entitled to full help with health costs.

The car scheme is already getting a good name for itself outside Killin. Trustees recently attended a meeting with Strathcarron Hospice Outreach team, Compassionate Neighbours, who are looking at whether they can support some of the isolated people in their community. As well as that, Don is to give a presentation to the neighbourhoods reference group in Balfron about how the car scheme was developed.

If you want to use the car scheme, please call 07988280743
Alicja Fraser



We are coming to the end of our U3A year with groups finishing for the summer break in June* and many will have some form of end-of-term celebration. However, the work of promoting the U3A goes

on and our new leaflets full of information about C&WP U3A are now in all villages north, south, east and west of Callander. We hope to attract new members to join at our Enrolment Day in Killin on Tuesday 27th August. Details of time and place will be available nearer the time.

The umbrella organisation, U3A Scotland, held an excellent promotion day in the Scottish Parliament building recently, to inform our MSPs about the benefits

of later-life learning and the wide variety of interest groups offered in the 54 U3As all around Scotland. They have pledged their support and we hope that before long the phrase "U3A? Never heard of it" will be a thing of the past. Our website has all the information about our group so please have a look at 'Callander and West Perthshire U3A'.
* Killin Bridge Group continues throughout the summer as normal

Vision Hair & Beauty

Tel: 01567820612

Main Street, Killin

Professional Hair Stylist & Beauty Therapist
Facials, Waxing & a wide range of Beauty treatments
St Tropez Spray Tans
Artistic Gel Nails
We stock Lanza, Dermalogica & GHID's

NEW SUMMER BEAUTY PACKAGES
NOW AVAILABLE

Aromatherapy Massage Appointments

Available with Susan Fraser



AppointedD

www.visionhairandbeauty.appointedd.com

Proposal of Erection of Electricity Substation in Glen Lochay

On 6th March 2019, SSE submitted a Proposal of Application Notice (PAN) to Stirling Council for the above and a Pre Application Consultation was conducted in the McLaren Hall on Thursday 9th May.

Whilst it is not our intention to try and stop the proposed substation, which will replace the existing one, we do want to ensure its impact is minimised. Many of you may even be unaware that a small substation function already exists at the power station due to its careful positioning and thoughtful landscaping. The replacement of the transformer and associated substation is deemed to be of national importance due to its requirement to support the delivery of an enhanced high voltage electricity transmission grid throughout Scotland. Our intention is to ensure that as a community we have influence over the final design and that SSE are required to consider significant measures to mitigate the impact of its construction in a such a beautiful location.

I would like to stress that whilst the impact to Murlaganmore, our much loved family cottage that has been enjoyed by many over the years for its peaceful location will be significant, it is for the impact on the wider glen and everyone who enjoys it that I raise my concerns and where impact can be mitigated most. The choice of position on an open hillside slope where the two glen roads merge; the proposed use of a gravel topped platform rising above the lower road including the scale of the one acre site on which it will sit; as well as a new proposed pylon so close to the road all raise concerns as to the impact of this required development on such a significant spot within the glen.

As many of you will know, the existing Glen Lochay Hydro-electric Power Station and associated infrastructure has had a presence in the area since the 1950s and great lengths were taken at the time by locals, land owners and the Hydro Board to minimise the impact of the development. I personally feel we would be doing an injustice to the energy and effort that went into ensuring the positioning,

architecture and landscaping of the original hydro scheme by not calling on SSE to seek to carefully consider measures to minimise the impact of the construction. We will be requesting that SSE seek to mitigate any negative impacts whether visually, audibly or environmentally to an acceptable level, and that any measures be appropriate to the exposed location, scale and nature of the development.

Whilst we acknowledge this development is required and respect that SSE is a major employer in the area, neither should hinder any of us ensuring the impact of this development on the landscape of Glen Lochay be minimised in a glen regularly enjoyed by many of us. I would request that anybody who enjoys the glen considers raising their objections during the planning application phase. By the time this edition of the Killin News goes to print it will be too late to raise any issues or concerns at an early stage through the public consultation route (this closed on 24th May). Many of you will have been unaware that the event was taking place in the village due to minimal advertising and signage, so please make sure you raise your objections in a manner appropriate to planning through the normal process. You can find more about how to raise a planning objection appropriately online or by contacting www.pas.org.uk

Some information about the development is available at www.ssen-transmission.co.uk/

projects/lochay-13211kv-transformer-replacement

Anyone at the consultation event will have seen initial visualisations of the proposal which have raised significant concerns. We will be requesting that SSE make final visualisations available to the public.

I am sure you will agree that the main impact that needs to be mitigated is on the visual amenity and character of the glen. Please join me in doing what you can by raising your concerns and objections through the planning process. This article seeks to raise awareness of the proposal and the impact of the exposed site and ensure we each do what we can to minimise that. As it stands the proposal has a visually overbearing impact to an unacceptable degree and will have a significant adverse impact on the character and appearance of the surrounding area.

Louise Thom



Ploughing Competition 2019

We would like to thank Auchlyne Estate for the use of their field for this Aevent and many thanks to Shutters Restaurant for supplying food for the catering. This event was a success again this year despite the weather, with a good turnout of competitors. A big thank you to all who took part. **Ian Hancock**



**1939 Fordson
with diesel engine fitted**



From initial consultation and full colour design to complete garden build... all under one roof!

Full design package
Stone work
Timber work
Garden features
Artificial lawns supplied & laid
Turf supplied & laid
Drainage

01786 841 719 / 01877 339 993

www.cruachanlandscaping.co.uk



Competition Results

Big Ploughs

- 1 Donald Hancock
- 2 Robert Grant
- 3 Stewart Christie

Small Ploughs

- 1 Ian Hancock
- 2 Finlay MacAskill
- 3 Ian Noble

Visitors

- 1 David Veitch
- 2 Jim Hamilton
- 3 David McCulloch



**A day of
muddy
furrows**



Overall Winners

Alistair Hunter Cup

Donald Hancock

Gilbert Christie Quaich

Ian Hancock

Straightest Ploughing

David Veitch



Ian and Donald Hancock

Jasmine Beauty
6 Cross Street,
Callander
01877331417

Opening Hours:

Monday: 10am-5pm

Tuesday: 10am-5pm

Wednesday: 930am-6pm

Thursday: 10am-8pm

Friday: 930am-6pm

Saturday: 10am-5pm

Website:
www.jasminebeauty-callander.co.uk

Book online:
jasmine-beauty.appointedd.com

Email:
marianne@jasminebeauty.net

PATRICIA WAITE

State registered chiropractor
Specialising in joint and spinal care,
and also using
Applied Kinesiology for dietary
and allergy problems

Tuesdays & Wednesdays 10am to 5pm

By appointment only at

The Bothy, Camserney Farm

Aberfeldy

PH15 2JG

07808 223960 mob

01887 820050

Donnie Macleod
**TREE SURGERY
HEDGES
&
GENERAL
LANDSCAPING**

Mobile: 07890 549 879

3 Railway Cottages, Glen Ogle,
Killin, FK21 8SZ

Stitt Brothers



**Building
Contractors
Painters and
Decorators**

Established 1952

tel: (01567) 820344

fax: (01567) 820944

Station Road, Killin, FK21 8UH

KILLIN 19 MUSIC FESTIVAL

ELEPHANT SESSIONS
RYAN YOUNG
HEADLAND

TRAIL WEST
KINNARIS
QUINTET
EABHAL

SIOBHAN MILLER
TORRIDON
BEINN LEE

BLUE ROSE CODE
TOM MCGUIRE &
THE BRASSHOLES
DLU

GNOSS
GREIG TAYLOR
BLUES COMBO
& MORE!

KILLIN, CENTRAL SCOTLAND 14-16 JUNE
TICKETS: KILLINMUSICFESTIVAL.COM

Enjoy some of the best music Scotland has to offer in one of the most beautiful locations in Scotland. Killin Music Festival offers an impressive artist line-up at a smaller scale event; performances bring an intimate and the bar areas are sociable (no mile-long queues to get your drink!).

Killin Music Festival features something for everyone – a relaxed sit-down concert or bouncing night-time show. All events are accessible indoors or under cover, so there is no need to fear the temperamental weather.

You will have a chance to take in the stunning scenery and warm hospitality the village has to offer whilst enjoying the variety of free fringe events taking place during the weekend, including our second stage, craft fair and competitions.

WEEKEND TICKET £69			
2-DAY TICKET £59			
Under 18 (weekdays only) DAY TICKET: £29.50 DAY TICKET: £29.50 DAY TICKET: £25			
	FRIDAY	SATURDAY	SUNDAY
MAIN STAGE	TRAIL WEST	ELEPHANT SESSIONS	SEATED CONCERT
	TOM MCGUIRE & THE BRASSHOLES	KINNARIS QUINTET	SIOBHAN MILLER
	BLUE ROSE CODE	TORRIDON	RYAN YOUNG & JENN BUTTERWORTH
	BEINN LEE	GNOSS	NO MARCS
	EABHAL	THE 101	
FRINGE	PORTNELLAN TENT <i>Free Entry!</i>	PORTNELLAN TENT <i>Free Entry!</i>	PORTNELLAN TENT <i>Free Entry!</i>
	DLU	GREIG TAYLOR BLUES COMBO	OPEN STAGE COMPETITION
	PAD'S TRAD DISCO	HEADLAND	PIPE BAND PARADE
		CRAFT FAIR	COMMUNITY STAGE <i>Free Entry!</i>
		HIGHLAND HUSTLE WORKOUT*	KILLIN COMMUNITY CHOIR
			KILLIN KIDS CHOIR

*GROUP SUBJECT TO CHANGE - TICS APPLY - BOOKING TICS APPLY

KILLIN, CENTRAL SCOTLAND 14-16 JUNE
TICKETS: KILLINMUSICFESTIVAL.COM

Andrew Anderson & Sons Funeral Directors

Est. 1969

"Stand Sure we will look after you & your family"

We are proud to offer a 24 hour caring and professional service to the local community.

A wide range of memorial stones are available.

We can also clean and add further inscriptions to existing family memorials.

CALLANDER
Funeral Home, Glenartney Road, Callander, FK17 8EB, Tel: 01877 330398

BALFRON
64B Buchanan Street, Balfron, Glasgow, G63 6TW, Tel: 01360 441023

STIRLING
90 Drip Road, Stirling FK8 1RW, Tel: 01786 237480

Email: info@anderson-funerals.co.uk • www.anderson-funerals.co.uk

MHOR 84

MHOR 84 MOTEL, KINGSHOUSE, BALQUHIDDER, FK19 8NY

Eat, Drink, Sleep...

Thank Folk It's Thursday
Live music every Thursday from 9pm, roaring fires, and a great atmosphere. Food served until 9pm.

Gift Vouchers
Available from £20 across all of our businesses.

Mhor Friends
Be the first to hear of our news, events and offers.
Visit our website to subscribe.

To stay or dine, visit our website or call **01877 384 646**

www.mhor.net

Jumble Sale Thank You

The Old Mill would like to thank the community for supporting the Jumble Sale in the Lesser Hall on the weekend of 11th May.

The sum of £111.40 was raised in sales for the Old Mill which was a fantastic effort as most items were priced at a pound or less!

The Killin Nursery raised money while clearing out in preparation for their upcoming refurbishment and, in addition to individuals with tables, the Killin and District Volunteer Car Scheme held a stall to raise awareness of the service they provide. We were also treated to a joyful performance by a travelling musician! The event was received positively and we will hold another Jumble Sale on Saturday August 3rd. The Old Mill will also be holding a recruitment drive for new volunteers. Contact or come into the Mill during opening hours Friday, Saturday and Sunday 10am-4pm. We need more volunteers to extend our opening hours. See you at the Mill!

**Wilhelmena
Old Mill Manager**



GAULDS FUNERAL DIRECTORS

Independent Family Business

**Helping bereaved families for over
20 years.**

Pre paid funeral plans in association with Golden Charter.

Crieff 01764 656567. Aberfeldy 01887 820436

Addison Terrace, Crieff. PH7 3AT.

20 Bank Street, Aberfeldy. PH15 2BB

www.gaulds.com

Strowan Woodland Cemetery

**The only Greenfield Cemetery in Perthshire for more information
phone 01764 656567**

Web site:- www.strowanwoodlandcemetery.info



What's on Offer at Killin Library

DVD's

Now all 7 day hire

Films £2.50 and £2, children's £1.50

Free Internet Access



COLOUR PHOTOCOPIER, PRINTING AND SCANNING AVAILABLE

Opening Hours:

Mon. : 10 - 1 & 2 - 5 ; Tue. & Fri: 10 - 1 & 3 - 7; Wed: 2 - 5

Drop in IT with tutor support :Tues 11am- 1pm

Tel: 01567 820 571

E.Mail : killinlibrary@stirling.gov.uk



JUMBLE SALE

Saturday August 3rd

10 - 2pm

The Lesser McLaren Hall

**Secure the opportunity to raise funds
for your project or promote your
business contact**

**or come into the Old Mill to
book a £5 table**



Rural Stirling
HOUSING ASSOCIATION

Do you need an affordable home ?

Rural Stirling Housing Association aims to support local communities by providing quality homes at affordable rents for families, couples and single people in housing need.

We currently have over 560 rented houses and flats. Around 40 of these become available for rent each year. We are in the process of building a further **23 flats in Callander and 12 flats & houses in Killearn**. We currently have properties in the following communities:

Aberfoyle	Doune	Kinlochard	Stronachlachar
Balfron	Drymen	Kippen	Tyndrum
Buchlyvie	Gargunnoch	Lochearnhead	
Callander	Gartmore	Strathblane	
Deanston	Killin	Strathrye	

We may be able to build in other communities in the future – please let us know to if you want to live in a village that is not listed above. Information on local housing need and demand helps us plan for the future.

If you are interested in renting one of our properties when they become available please contact us:

Rural Stirling Housing Association
Stirling Road, Doune
FK16 6AA
Telephone: 01786 841101
Email: enquiries@rsha.org.uk
www.rsha.org.uk

Registered as a Scottish Charity No SC037849

Musings From The Manse

Faith, Hope, and Love

I write these words a few weeks after Easter. Although that time is now past, the relevance of the message is perennial. In the news at the time was the fire at Notre Dame, the massacre of worshippers and tourists in Sri Lanka and the murder of the Northern Irish journalist, Lyra McKee. Alongside that was the weird and strangely counter intuitive message of Easter. I struggled this Holy week if I'm honest! I felt empty, flat, and until Maundy Thursday, I personally wasn't connecting with the narrative at all. But even, or especially clergy, can have doubts, disappointments, and struggles with faith and belief. Added to that is the pressure to deliver both comfort and challenge to those engaging, however tentatively or superficially, with the Easter services for whatever reason. As has often happened to me over the course of my Ministry, the discipline of having to celebrate Easter meaningfully was my entry point, yet again, to appreciation of this great and wonderful drama, and the starting point for that was my preparation for the remembrance of the last supper of Jesus with his disciples. However, before and during the Easter celebrations, other events were impinging upon Holy week with great poignancy. First, the fire at Notre Dame had a melancholic effect on me. It seemed a stark symbol of both the decadence and decline of Christendom in our 21st century. The former, because over the centuries the power and

influence of the church has often turned the message of Jesus upside down and inside out; the latter because of the ebb tide of Christianity in our day and age. Yet articles and commentary followed in the media, from some very unexpected places, about what the loss of the cathedral would mean; about the rich legacy of Christianity to Europe; and about the hope of restoration which could symbolise renewal in far more than material terms. I was taken aback by this, but also, pleasantly and thoughtfully encouraged.

Then the bombings! I had just celebrated a sunrise service at the head of Loch Tay on Easter Sunday morning which was wonderfully evocative and uplifting and on returning home heard the news about Sri Lanka. The sermon theme for the later services was hastily adapted. I have a friend from University days who worked in Sri Lanka during the civil war years and am well acquainted with the suffering of the Christian church in that country. Therefore, the news struck a very discordant note indeed. In the African-American Gospel churches there is a saying "It's Friday but Sunday's coming!" The two poles of Easter and human experience expressed in a nutshell: the horror of the first day and the wonderful renewal of the second. The irony for Sri Lanka was that Sunday turned out to be Friday.

Yet what has been apparent for years is that the "suffering church" outside of the West, has for centuries, even millennia, understood the Christian

Gospel and its power in a way we haven't and indeed, can't. Power corrupts and that has been the part of the legacy of Christian Europe. But it is not the whole story. The Holy week edition of the Spectator had an article by the historian Tom Holland. In this, Holland argues that the strange message of a marginalised and crucified Jew was not only counter cultural to the Greco-Roman world of antiquity, but actually the seed which has helped shaped our understanding of morality in the West. The notion of a crucified messiah was an oxymoron in the ancient world; a world that celebrated the heroic and the strong. The notion that all people were made in the image of God, and therefore had an intrinsic value, undercut the pyramidal structure of ancient society. The affirmation that God's seal of approval was upon Jesus of Nazareth, a peasant from Galilee, and not on Caesar, was more than revolutionary, it was radically counter-intuitive. The German philosopher Nietzsche dismissed it contemptuously as "slave morality". The fact that the Western church has not always lived up to the implications of this message does not rob it of the power to challenge and change hearts and lives and yes, even cultures.

Finally, a little glimpse of that message was seen in the funeral service of Lyra McKee in Belfast. Love over hate, service over power, forgiveness over revenge, goodness over evil: it was a light shining in a dark world. There is hope.

Russel Moffat

Killin Floral Association

It will soon be time to start planting up gardens, tubs, hanging baskets and window boxes for summer colour. The Killin Floral Association will once again be looking out for the best displays and will be awarding prizes in three main categories: Domestic for householders in the village, Commercial for all business premises and Children's tallest sunflower competition.

Please remember that our only income comes from donations and if you wish to make a donation, Sheila in the Sweet Shop has kindly offered to take these and pass them on to us. The more money we get, the better the quality and variety of plants we are able to buy for the village.

Alicja Fraser

Thrift Shop Arts & Crafts Information

Opening Hours



10am - 4pm

Friday

Saturday

Sunday

***opening hours will extend during Spring, and are dependent on the availability of our volunteers.*

 @The Old Mill, & KAT
 @the_old_mill_killin



The Old Mill, Main Street,
Killin, Perthshire, FK21 8XE



The Old Mill, Killin



Spring Cleaning? Cluttered?

Items no longer bringing you joy?

The Old Mill needs your donations. Proceeds of the re-sale of your goods will support the community driven project to maintain and refurbish the Old Mill, Killin.

Items such as clothing, books, dvd's, homewares, art and craft materials, toys, kitchenware, and furniture in good condition gratefully received.

** we cannot accept
electrical items,
duvets, baby chairs and*

For further information please telephone 01567 820988 or email benlawers@nts.org.uk or book online at www.nts.org.uk/visit/places/ben-lawers/events

Friday 24th May: Ben Lawers ridge walk

Walk the 7 peaks of the Ben Lawers range, with a qualified mountain leader who has detailed knowledge of the flora and wildlife of the area. A good level of fitness is required. We will reunite you with your vehicle at the end of the walk.

Cost: adults £50

Duration: 8-10 hours

Bring: walking boots, warm, waterproof and windproof clothing, plenty of food and drink.

Meet: 9am Ben Lawers NNR car park. **Booking is essential.**

Wednesday 3rd July: Butterflies and Moths of the Mountain

Discover some of butterflies and moths that inhabit the floristically rich lower slopes of these mountains, including (weather permitting) the elusive mountain ringlet.

Duration: 3 hours

Cost: adults £5, children £2.50, family £12.50

Bring: walking boots, warm, waterproof and windproof clothing.

Meet: 1.30pm Ben Lawers NNR car park. Numbers are limited, so booking is advisable.

Friday 5th July: Tarmachan ridge walk

A walk up Meall nan Tarmachan and the other tops on this scenic ridge with qualified mountain leaders who have detailed knowledge of the flora and wildlife of the area. A good level of fitness is required.

Cost: adults £35

Duration: 5-6 hours

Bring: walking boots, warm, waterproof and windproof clothing, plenty of food and drink.

Meet: 10am Ben Lawers NNR car park. **Booking is essential.**

Tuesday 9th, 16th and 30th July and Tuesday 13th, 27th August: A kids-eye view of Ben Lawers

Join our hands-on exploration and leave no stone unturned on the way to becoming a nature know-it-all.

Duration: 2 hours

Cost: adults £2, children £5, family £12.50. Adults must be accompanied by a child (and vice versa).

Bring: Wellies and waterproofs.

Meet: 10.30 am Ben Lawers NNR car park. Numbers are limited, so booking is advisable.

Friday 12th July and Friday 19th July: Mountain Flowers

On this high-level guided walk we aim to see some of the arctic-alpine plants for which these hills are famous. The ascent and descent require a reasonable level of fitness and we will encounter some steep ground.

Duration: 8 hours

Cost: adults £30, children £15.

Bring: walking boots, warm, waterproof and windproof clothing, packed lunch and drink.

Meet: 9.00am Ben Lawers NNR car park. **Booking is essential.**

Wednesday 24th July and Wednesday 21st August: Flora and fauna of the hillside

If you are a hill walker who would like to know more about the plants and wildlife around you or training to be a mountain leader, then this could be the walk for you. Familiarise yourself with some of the characteristic plants and wildlife on the lower slopes of these mountains.

Duration: 2½ hours.

Cost: adults £10, children £5

Bring: walking boots, warm, waterproof and windproof clothing.

Meet: 1.30pm Ben Lawers NNR car park. Numbers are limited, so booking is advisable.

CHARLES GRANT
Painters and Decorators

Tiling, Artexing, Graining,
Ragrolling, Sponging, Stripping,
Paper Hanging, Cornicing,
Fire Proofing,
Carpet and Upholstery
Cleaning Services

Telephone: (01567) 820 342

Beechcroft, Main Street
Killin, Perthshire FK21 8UT

John Morris Safety Ltd

John Morris
Dip208H CMOSH MIRM NIMM MAPS WRHS
Chartered Health and Safety Practitioner
QIMCR
Registered Contractor

REHIS Health & Safety Certificate - 1 day £75 per person
REHIS Food Hygiene Certificate - 1 day £75 per person
First Aid at Work Certificate - 3 day £225 per person
Emergency First Aid at Work Certificate - 1 day £75 per person
Emergency First Aid at Work (+F) Certificate - 1 day £85 per person

Source of Competent Safety Advice, Fire Safety Training,
First Aid Training, Manual Handling Training,
Risk Assessments, Safety Inspections or Audits.

"Helping you to meet your legal requirements"

If you would like more information, please contact:
Craigavie Farmhouse, KILLIN, Perthshire, FK21 8SJ
Tel: 01567 820787 Mobile: 07896 514033 e-mail: john@johnmorrisafety.co.uk

Sarah Kelly
Complimentary
Therapies

Do you suffer
from Anxiety, Stress,
Fatigue or Chronic Pain.

Call Sarah for a chat to
discuss symptoms and
options that might help you.

Available at Bank Street
ABERFELDY Tuesdays and
Thursday's - 07754 497889



Duration: 6 hours

Cost: adults £25, children £12.50.

Bring: walking boots, warm, waterproof and windproof clothing, food, map (OS Landranger 51 or Explorer 378) and compass.

Meet: 10.30am Ben Lawers NNR car park. **Booking is essential.**

Wednesday 7th August: Hillside safari

Experience the rich flora of the lower slopes of this famous botanical nature reserve and the varied wildlife flourishing in restored native plant communities.

Duration: 2½ hours.

Cost: adults £5, children £2.50, family £12.50

Bring: walking boots, warm, waterproof and windproof clothing.

Meet: 1.30pm Ben Lawers NNR car park. Numbers are limited, so booking is advisable.

Friday 2nd August: An introduction to real navigation

Don't rely on your GPS or phone, get to grips with the basics of how to use a map and compass in the hills. The route will involve rough ground and moderate gradients so requires a reasonable level of fitness.



KILLIN HOTEL

RIVERVIEW RESTAURANT

LOCALS, VISITORS, and CHILDREN all Welcome !

Beautiful Riverside Location

**Delicious meals
served all day from
12 noon to 9.30 pm in
a relaxed hospitable
atmosphere**

**Fish and Chips for
2 people, including
a bottle of wine, for
£24.50**



**Large function
room available for
weddings,
birthdays,
fundraising events,
or conferences**

**36 well appointed
cosy rooms and 5
annexed family
rooms**

Rumoured to be the best place in Killin with our friendly staff, roaring fires, real ales, fine wines and fantastic food ! Feel just at home as you dine in our Spacious Conservatory, Cosy Bistro or our GrandTartan Room

Find us in Facebook page Killin Hotel

Tel : 01567 820296

mail@killinhotel.com

www.killinhotel.com

Tel : 01567 820296

Killin's New Year Fireworks Display

Over four months have passed since the display and now in May, we are having to think about planning to celebrate the start of 2020. The council have informed us that our application has to be submitted during August for an event on New Year's Eve!! So we have to get moving.

As we've previously said, there are funds which have been carried over from last year, but we still need to raise further money to provide another great display this year. To get things moving we have organised a meeting to be held at the Killin Hotel at 11am on Thursday, 6th June. We would like to see as many people there as can make it, as well as those who supported us last year. It would be great to see some new faces as well.

The 2019 display was not without



its problems and we shall try to remedy them, but new ideas for the forthcoming display would also be greatly welcomed.

The very successful sponsored cycle ride last year is to be held again on Sunday, 25th August, courtesy of Michael and Lynn at the Courie Inn. Hopefully, all of you cyclists will be getting in training for what promises to be another great day

out. Funds raised will again go towards the cost of the fireworks. Ron and Sheila Allner have also said they will produce another Killin calendar for 2020 to raise funds for the fireworks display. Thanks to you both. If any local residents are interested in volunteering to help with the event, please let

either of us know.

We both look forward to working with the community to produce a great firework display to help Killin celebrate the start of 2020.

Mike Beresford
Jinny Anderson



Ben Lawers Hotel

and Restaurant

★ ★ ★

Opening hours
12noon - 11pm

Closed Weds until 5pm

Home made Take Away PIZZAS

Real Ale
Food Served
Real Fires
and a
Warm Welcome to All

LIVE MUSIC
20th July
D. P:US

Please call or email:
01567 820 436
mail@benlawershotel.co.uk
www.benlawershotel.co.uk





Gourlay

Service on a plate

A family owned and operated catering business based in Crieff serving customers around Perthshire. If you require a caterer for that special event we can help.

From a private function in a local church hall to a business event in your own premises or marquee we can provide a service to meet your requirements.

Wedding Catering

Corporate Functions

Private Parties

Finger Buffet

Barbeques

and our famous Hog Roast

Call Alastair Gourlay on 07808 472 395
or visit our web site **www.gourlay.co**

Obituary : Father James Roderick McCruden: 1945 – 2018

Father Jim McCruden served as priest at St Fillans Parish for 26 years. The parish is extensive, covering 1,000 sq miles and he celebrated mass every Sunday, first at Doune, then at Callander, finishing up at Killin where he will be remembered by locals and many who have holidayed here over the years. He was born and brought up in St Andrews and was proud to be descended, on his mother's side, from the fishing community in the town. The middle child of three, he spent an idyllic childhood with his head always in a book and singing in the Episcopal church choir. He was so fond of history and reading that his mother had to chase him out of the house to get some fresh air. Young Jimmy's love of history and architecture was fostered by an aunt and uncle who were in service. He visited them every Saturday in his teenage years and was fascinated by the history of the family who employed them and the upstairs/downstairs life. He had a strong sense of family and maintained close links with his brother and sister, nephews and nieces and their families. After attending Madras College as a pupil, Jimmy (as he was known to his family) went on to read Medieval and Modern History at St Andrews University. There he became intrigued by religion, spirituality and the different denominations of Christianity, joining the Student Christian Movement society. In 1982, he decided to convert to Catholicism;



two years later, answering a call to the priesthood, he went to the Beda college in Rome to study. After completing his studies, he served at The Friary in Dundee and at St John's in Perth, before being given the parish of St Fillan's. After university, Jimmy trained as a teacher at Moray House in Edinburgh and returned to Madras College as a History teacher. It was here that he honed the skills of oratory and teaching which served him so well as a parish priest. His sermons were interesting, thought provoking and often peppered with historical references. He didn't shy away from controversy and preached honestly, with great

integrity and compassion for all. This extended to his duties as pastor in the parish where he visited the elderly, sick and housebound, regardless of their denomination. People in need were his concern and this attitude endeared him to both his parishioners and the wider community. Away from parish life, Father Jim indulged his love of walking, birdwatching and medieval architecture. His favourite haunts were Montrose Basin, Glen Esk, Berwick and the Dales. His love of medieval architecture led him to choose Careston near Brechin as the place of his burial which took place in January this year. All these wonderful attributes, however, should not blind the reader to his faults. Father Jim was notoriously absentminded and possibly not the best driver in the world; indeed, many of his friends and family members were reluctant to be driven by him. His absentmindedness led him to forget about weddings, baptisms (until prompted at the last minute) and visits by the bishop. He once sent a card in the wrong name to celebrate the wedding of his niece and her husband. Father Jim was a quiet and humble man with a wicked sense of humour whose guidance and care is sorely missed by all, especially his congregation.

Back Pain & Physiotherapy Clinic
Comrie

For the treatment of Back Pain, Neck & Shoulder Pain, Sports Injuries

Trevor A Griffiths
MCSP LCSP (Phys) BTAA

Chartered Physiotherapist
Registered Bowen Therapist & Instructor

47 Tay Avenue, Comrie, PH6 2PF
tel: 01764 670 567
mobile: 0788 759 7455
email: bowen@perthpoint.com

KILLIN OUTDOOR
CENTRE AND SHOP

Tel: 01567 820 652

FOR ALL YOUR OUTDOOR GEAR, BOOKS, MAPS ETC.....
KAYAK, CANOE AND MOUNTAIN BIKE HIRES
KILLIN RESIDENTS HAVE A 10% DISCOUNT ON NON REDUCED ITEMS



This term is always really exciting for our units as the light nights and good weather mean we can get outside more. So much of what we do in Scouting revolves around the great outdoors; whilst having fun we teach our young members how to respect and care for their surroundings. We are so privileged, as a Scout group, to have such wonderful outdoor spaces we can use on our doorstep, compared to perhaps some more urban town and city groups. All sections have an Outdoor Challenge badge to work towards and both our Beavers and Cubs worked towards these on their recent sleepover and camp. This issue we're going to tell you a bit more about Beaver sleepover and next you'll be able to find out about Cub camp.

Beaver Sleepover

Our annual sleepover was held in Aberfeldy 11-12th May with a Gruffalo explorers theme to celebrate 20 years of the Gruffalo story. Saturday afternoon after arriving, we went on a nature walk in the Birks, keeping our eyes peeled for lots of different animals, plants and insects as we found out about the wildlife in our local area. We were joined on our sleepover by David who is a leader with our Scouts, but more importantly to us, an expert in all things trees, thanks to his job. David taught us lots about different trees, plants and habitats, even the myth about the fairies of the Rowan tree. Back at the hall we had a go at building shelters and cooked s'mores over a fire, as well as learning about

some basic first aid that we might need for accidents outdoors. We enjoyed a buffet dinner, like you would get at a birthday party. Struan Mc was also celebrating his birthday like the Gruffalo! After dinner, our day visitors left us and we enjoyed some energetic games outside on a glorious spring evening. This was a great way to burn off the last of the energy we had left before settling down to watch the Gruffalo. After hot chocolate and some movie treats it was time for bed! A late night and an early start left some of the leaders struggling on Sunday morning but the Beavers were ready full of energy for another day. After breakfast we had to pack our own bags and tents away (with some help from the leaders). The sun was shining and

we spent the morning exploring the river area where we saw lots of evidence of beavers nibbling away at trees on the riverside. This was super exciting to see and they've definitely done a lot of chewing since we were last here in September. We all had a go at perfecting our skimming techniques with stones down at the river before enjoying some time in the playpark.

All too soon it was time to go home. We had a final log chew (Beaver group discussion) about our favourite parts of the weekend and got given our badges we'd earned, including another hike and night away to our collections. The extra surprise was a special limited edition badge for the Gruffalo explorers celebration camp 2019 that has been produced specially for Beavers holding a Gruffalo themed camp this year. Everyone had a wonderful time – the most popular answer to the favourite part of the weekend was "everything".

Beavers

*Beavers are aged 6-8, 2 colonies meet alternating Tuesdays 6-7pm
Lesser McLaren Hall*

This term we've been working towards our "explore" and "adventure" badges! We had a think about all the great places there are to explore around Killin and each colony decided where they would like to explore more. The Lawers beavers explored the lower slopes of Sron a Clachain and the Stags beavers are going to explore the "Scout pool" area down Glen Lochay. As part of our adventure badge we're looking forward to a trip along the lochside to





2nd Killin & District Scout Group Stirling & Trossachs.

Abernethy, Ardeonaig where we're going to be doing some adventurous activities to finish off before the summer. More of our Beavers have been busy working towards badges at home too; Eilidh has completed her stage 1 swimmers badge and Struan A his builder badge. After the summer we will have space for a few



more Beavers so if your child is 6 or about to turn 6 please do get in touch.

Laura Bathgate – Beaver Leader
07708216065

Cubs

Cubs are aged 8-10½ and will be meeting every other Tuesday in The Lesser Hall, Killin, from 7.15pm to 8.30pm.

With the better weather the Cubs have been outside keeping busy. We were able to do some good work towards our community impact badge with a litter pick in the Breadalbane Park. Somehow we were able to fill 2 large bin bags of rubbish! A real achievement from all. A lot of planning has been put into our joint cub camp and I can confirm it was a success. Certainly one to remember with lots of friendships and networking as well as sub-freezing overnight temperatures to contend with. More news of this camp to follow in the next Killin News as we

are still unpacking as we write. Highlights still to come are a full day bike ride and nice local walk.

Stephen Rawlinson – Cub Leader
07742 886918

Scouts

Scouts are aged 10½-14 and meet every Wednesday in The Lesser Hall, Killin, from 7-9pm.

A brief follow up for the Scouts this week as the majority of our Scout leaders have been assisting with other sections camps and sleepovers. We are working really hard towards our forestry badge with some great contributions looking likely to an existing woodland in the local area. Highlights coming up are some mountain biking, wood whittling and local walks with a plan of possibly doing some bigger and exciting walks in the summer. Still lots of planning going on behind the scenes at Scouts.

New Scout Leader – Matt Collins
07564 669392
2ndkillinsscouts@gmail.com

Rob Roy HOMES



Specialist in the design
manufacture and supply
of timber frame homes
and buildings
Rob Roy Homes

Comrie
Perthshire
PH6 2LB

Tel: 01764 670424 Fax 01764 670419

E mail: mail@robroyhomes.co.uk
Website: www.robroyhomes.co.uk

37 years of quality value and service



JASON CAMPBELL

**Plumbing & Heating
Bathroom Installations
Wet Room/Tiling/
Repairs
Boilers**

Tel 07772973082

Grooming Marvellous

Dog grooming
Dog walking
Pet sitting
Equine Dentistry



HND in Animal Care and Management
Fully insured Qualified Dog Groomer
Over 17 years professional experience with
large and small animals
Lindsay Willison
mob 07570 131230

ALLY BAIRD LTD.

Building and Roofing Services

**ROOFING • EXTENSIONS
MAINTENANCE • RENOVATIONS**

No job too small, free estimates and all work is fully guaranteed

M 07833 312346 T 01877 330389
E ally.baird@btinternet.com W www.allybaird.co.uk

Registered Office: 25 Lagrannoch Crescent, Callander FK17 8DS, Scotland



Celebrations

Ruby Wedding Anniversary

Alex and Fiona Stewart wish to thank their family for the support and gift celebrating their anniversary. The Photographic Experience at selected locations, which includes the whole family is quite unusual and

will provide a wonderful pictorial record of this special year. Special thanks also to our many friends for the sincere messages, both amusing and cheeky, on reaching this milestone.

We both look back over forty years with all its variances and experiences with

a sense of achievement. Heather and David have done us proud and are set on their own course now. Our grandchildren are a real joy and Eva, Imogen, Skye and Lachlan will all play their role in our family history in due time.

Our involvement with local clubs and events working along with many in the community, helped to maintain an enjoyable social life and in a small way add to the history of the village we call home.



In forty years there have been many changes in shops and businesses as well as the social calendar enjoyed by everyone. However, our memories have preserved how things were, and the contribution we both made, along with that of others, helped the village to survive and move

forward to where it finds itself today.

Many thanks to everyone for their best wishes and we look forward with an eye on the past.

Alex & Fiona

Wedding

James Duncan Kennedy and Jennifer Sarah Thomas were married on 10th May at Callander registry office



feeds & stoves

Complete stove solutions from sale, installation and maintenance to fuel and accessories. Plus pet food, supplements, toys and dog bathing and grooming.



All the essentials for cosy country living

Professional Chimney Sweeping which can be done in any weather with no mess. Part of ICS & HFTAS. Stove Sales, Installation, maintenance and parts also available

wash & groom

Our Dog Grooming & Bathing Salon is now open within Feeds & Stoves

Shop Online for **FREE DELIVERY** feedsandstoves.co.uk

Mon-Sat 9am-5pm | 21 Main Street, Callander FK17 8DU | 01877 330 643 • 07795 966 514
www.feedsandstoves.co.uk | Dawn@feedsandstoves.co.uk

The Capercaillie

Fully Licensed Restaurant and En Suite Rooms

Relax by our log fire and view our beautiful garden by the river Dochart.

Excellent service and quality home made food

Breakfasts

Lunches

All Day Meals

Home Baking

Take Away Snacks, Meals and Pizzas

Private Parties Catered for

New draft beers, Guinness, Birra Moretti+ Real Ales

For Bookings Telephone Myra on

01567 820355

www.capercaillierestaurant.co.uk

Local Planning Applications

National Park

22 Mar 2019

Proposal: Change of use of 2 no. agricultural barns to storage use associated with Cononish Gold Mine and formation of external storage area and explosives store (retrospective)

Location: Cononish Farm, Cononish Road, Tyndrum

Applicant: Scotgold Resources Ltd

Application Type: Detailed Planning Permission

Decision: Approve

19 Apr 2019

Proposal: Erection of 2no. poles for 11Kv Overhead Line

Location: Land At Benmore Farm, Crianlarich

Applicant: Lorna Williamson

Application Type: Statutory

Notification - overhead lines

Decision: Current

Perth & Kinross Council

18 Mar 2019

Proposal: Alterations and extensions to dwelling house

Location: Cragganester, Lawers

Applicant: Mr and Mrs Pete and Morven Cooke

Application Type: Planning

Permission local

Decision: Approve the application

Stirling Council

04 Apr 2019

Proposal: Installation of 2No. UHF antennas onto existing mast and ancillary development

Location: Killin Transmitting Station, Killin

Applicant: Arqiva

Application Type: Statutory

Notification (Telecoms)

Decision: Approve

18 Apr 2019

Proposal: Reinstatement of fire damaged dwelling house

Location: Myrtle Cottage, Killin

Applicant: Mr Allan Attack

Application Type: Full

Decision: Unknown

Community Auction

The Office Bearers and Members of Lodge Breadalbane St. Fillans No. 815 wish to sincerely thank the village, and surrounding community for their donations to the 2019 Auction. Due to limited space available for storage of goods, and time needed to arrange these in a suitable order to be catalogued and numbered, donations could not be received after the morning of Monday 15th April. The organisers apologise in not making this clear on the advert and notices. The number of lots available for sale was almost 400 and despite being amateurs, we got through everything in three and a half hours.

It is the generosity of those donating as well as the purchasers, both local and visiting, which makes the evening enjoyable, and raises funds to assist organisations, clubs and worthy causes. Going forward, Easter Saturday is reserved for the 2020 Auction and the Lodge Members look forward to the continued support of the Villagers and surrounding area.

Alex Stewart PM

Doune Woodyard & Hardware Shop



CUTTING SERVICE & DELIVERIES AVAILABLE!



FENCING - DECKING - SHEET MATERIALS

TIMBERS - CEMENT - POSTCRETE

BUILDING SAND - SHARP SAND

PAINTING PRODUCTS - SCREWS - NAILS

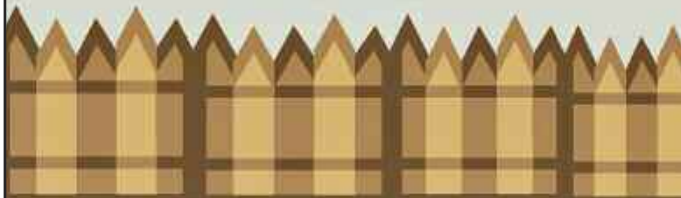


Email: jane@dounewoodyard.co.uk

Unit 1, Lochill Industrial Estate

Doune FK166AD

01786 841204



A&B Services supplying your every need for Forestry and Agricultural machinery and accessories. Adapting, maintaining and servicing all types of machinery. Mobile welding unit and hydraulic stock. Agents for Husqvarna, Oregon and Koller as well as other recognised brands. We also provide a range of safety clothing and footwear. Sales and aftercare of strimmer's, lawnmowers including robotic, chainsaws and much more. New for 2018 stocking Husqvarna full Auto mower range as well as their new battery series.



A&B Services (Scotland) Ltd, Main Street, Killin, FK21 1UW

Tel: 01567 820840

E: admin@abs-scotland.co.uk

W: www.abs-scotland.co.uk

Natural Beauty



To advertise in the Killin News
Advertising Rates from £12

Contact Tel: 01567 820298

Adverts are accepted in good faith
 and we cannot be held responsible
 for the goods and services
 advertised

Web sites: www.killin.info and
www.killinnews.co.uk

e-mail:
[editorial\[at\]killinnews.co.uk](mailto:editorial[at]killinnews.co.uk)
[adverts\[at\]killinnews.co.uk](mailto:adverts[at]killinnews.co.uk)

Address: Main Street, Killin
FK21 8UW
Office Phone : 01567 820014

Your copy of Killin News

Just a reminder that copies of Killin News are delivered free to most households but anyone outside normal delivery routes who does not receive a copy can pick up one from the Library.

Would you like to join
the KILLIN NEWS Mailing List
or send copies to your friends?

If so please please send
 your details to us.

(See above)

Annual cost: UK £15:

Outside UK £35

Please make cheques payable
 to Killin News

Man Made Eyesore

I took this photo on the May bank holiday when down at the bottle bank and was appalled by the state of the area. What visitors must think when they see the mess doesn't bear thinking about.

I'm not sure what the solution is, but maybe Stirling Council could be asked if it was possible for general waste bins to be provided.

Apart from the unsightliness of it all, if the weather gets warmer the mess will become a health hazard.

Emma Paterson



This is Rubbish !!

Would it be possible for spot checks of bag contents by an official to identify the culprits so that fines could be enforced? This might at least discourage some people from dumping their rubbish here.

Ads Index

A&B Services	37	Grants Laundry	14
Aberfeldy Optician	5	Green Welly	13
Aberfoyle Roofing & Building	3	Grooming Marvellous	35
Ally Baird	35	Heartland Vets	6
Anderson Funeral Directors	27	Jasmine Beauty	26
Andrew Baird Optometrist	23	Jason Campbell	35
Artisan Cafe	12	John Morris Safety	30
Back Pain Clinic	33	Killin Hotel	31
BL Decorators	4	Killin Library	28
Ben Lawers Hotel	32	Killin Outdoor Shop	33
Bridge End Mill	8	Learn to Sing	22
Bridge of Lochay	10	LixToll	40
Callander Physio	11	Luib Hotel	5
Capercaillie	36	Mains of Taymouth	18
Care Dental	17	Marshall Roofing	25
Charles Grant	30	McLaren Leisure Centre	8
Ciro's	25	Mhor84	27
Coach House Hotel	18	Patricia Waite	26
Cooper Cottages	16	PFK Callander Ltd	15
Courie Inn	19	RG Electrical	9
Crianlarich Store	12	Riverside Vets	20
Cruachan Restaurant	20	Rob Roy Homes	35
Cruachan Landscapes	26	Rural Stirling Housing	28
Donnie McLeod	26	S.Forster Electrical	19
Douglas McRobbie	15	Sarah Kelly	30
Doune Woodyard	37	SJB Plant Hire	22
Eco Carpet Cleaning	9	Sports & Leisure Club	12
Eric McAllister	19	Stephen Kerr MP	16
Escape	4	Stirling Council IT	15
Fabric Studio	14	Stitt Bros	26
Feeds & Stoves	36	Sula	6
Gatehouse Nurseries	11	The Old Mill	29
Gaulds Funeral Directors	28	The Studio	22
Golden Larches	21	TJ's Diner	7
Gourlay	32	Tombreck Farm Shop	23
Graham Grant Decorating	3	Vision Hair & Beauty	24
Grant and Welsh	9	Window Cleaning	3

What's On In Killin And District

Regular Activities

Monday

- Juniors P7 Badminton, 6-7pm, McLaren Hall
- Adult Badminton, 7-10pm, McLaren Hall
- Junior Badminton, 6pm, Crianlarich Hall
- U3A Bridge, 7.15-9pm, Killin Hotel, contact Marion 829027
- Outdoor Bowls, 6.30pm, Sports Pavillion
- Indoor Bowls, 7.30pm, Lesser Hall, (winter only)

Tuesday

- Killin Craft Group, 10am-12pm, Community Rooms
- Internet Cafe, drop in between 11am-1pm, Killin Library
- Adult Badminton, 7-10pm, McLaren Hall
- Beavers, 6-7pm, Lesser Hall
- Cubs, 7.15-8.30pm, Lesser Hall (every other Tuesday)
- Choir, 7.30pm, Church, contact Franny 829048
- Netball, 7.15pm, Killin Sports & Leisure Club
- Tuesday Club, 2-4pm, Community Rooms
- U3A Art, 2pm, Killin Hotel
- CAB drop-in session, 10:30-12:00, MacGregor's Market, 1:00-2:00, Killin Library

Wednesday

- Strength & Balance, 1.30-2.30, Killin Hotel
- Highland Hustle, 6.30-7.15pm, McLaren Hall
- Metafit, 7.30pm, McLaren Hall
- Scouts, 7-9pm, Lesser Hall
- Explorers, 7-9pm (last Wed of month), Lesser Hall
- U3A French, 2.30-4pm, Killin Hotel

Thursday

- Women's Guild, 2pm (3rd week of month) , Falls of Dochart Retirement Home
- Running Club, 6pm, Acharn Forest carpark

Friday

- U3A Bridge, 2pm, Killin Hotel
- Yoga, 10.30-12.00, The Big Shed

Sunday

- Killin Gun Club, 3rd Sun of month March-December. Contact Stuart Ogston 07999 510014 Henry Paterson 01567 820354

Coming Soon !

June

- 1-2 Bob MacGregor Memorial Trials
- 3 Strathfillan CC AGM, p13
- 5 Walk in the Park, p19
- 6 Fireworks Meeting, p32
- 12 Walk in the Park, p19
- 14-16 Killin Music Festival, p3
- 15 Book Sale
- 17 Killin CC meeting, p13
- 19 Walk in the Park, p19
- 26 Walk in the Park, p19

July

- 3 Walk in the Park, p19
- 10 Walk in the Park, p19
- 17 Walk in the Park, p19
- 24 Walk in the Park, p19
- 31 Walk in the Park, p19
- various dates - NTS events, p30

August

- 3 Old Mill Jumble Sale, p28
- 7 Killin Highland Games
- 17 Killin Show
- 25 Sponsored Cycle, p32
- various dates - NTS events, p30
- 27 U3A Killin Enrolment, p24

Church Services

- Sunday 10am, Morning Worship, Killin Parish Church
- 2nd Sunday of the month, 3pm, Falls of Dochart Retirement Home

Mobile Libraries

Tyndrum/Crianlarich Fortnightly Fridays

June 14, 28, July 12, 26

Crianlarich

Police Station 10.45-11.25
Glen Falloch Road 11.30-11.45
Willow Square 11.50-12.15

Tyndrum

Station Road 1.30-1.50
Clifton 1.55-2.20
Mansefield 2.25-2.50

Glen Lochay/Ardeonaig Fortnightly Mondays

June 10, 24, July 8, 22
Glen Lochay 11.15-12.30
Ardeonaig 2.00-2.45

Perth and Kinross Fortnightly Tuesday

June 11, 25, July 9, 23
Tombreck 16.40-17.00
Lawers 17.15-17.30

Which bin? Saturdays

1st June

8th June

15th June

22nd June

29th June

6th July

13th July

20th July

27th July

3rd August

Grey = grey bin +
blue bin

Brown = brown bin + blue box

Green = brown bin +
green bin

Recycling Centres

Callander

Monday-Friday: 5pm-8pm
Saturday: 10am-2pm
Sunday: Closed

Aberfeldy

Tuesday and Thursday
9am-7pm
Saturday and Sunday
10am-5pm

Crieff

North Forr, Brioch Forr
All Year
Monday-Friday 9am-7pm
Saturday & Sunday
9am-5pm

ISUZU
THE PICK-UP
PROFESSIONALS

www.lixtoll.com
www.lixtoll-isuzu.co.uk



Lix Toll Garage Ltd Killin, Perthshire, FK21 8RB

Tel: 01567 820 280

THE NEW GENERATION ISUZU
D-MAX RANGE
AT LIX TOLL

DEFENDERS IN STOCK
COVERING THE FULL
RANGE

5 YEARS / 125,000 MILES WARRANTY

3.5 TONNE TOWING

VARIOUS 4X4'S IN STOCK

BASC or NFU DISCOUNT AVAILABLE ON ALL NEW ISUZUS

MAIL ORDER PARTS DEPARTMENT



FULL LAND ROVER REFURBISHMENTS

TESTING STATION CLASS 4, 5 LIGHT & 7
24 HOUR SELF SERVICE FUEL STATION
AIR, VACUUM, HOOVER & CAR WASH

AUTHORISED DEALER



Everything Land Rover & Isuzu

Sales, Parts, Accessories, Hire, Service and Repair.

For further information contact sales@lixtoll.com or info@lixtoll.com